

MAINE TURNPIKE AUTHORITY

Pre-Bid Conference

CONTRACT 2026.19

RAMP IMPROVEMENTS

BIDDEFORD EXIT 32

MM 31.6

MAY 5, 2026, 2:00 P.M.

1) Location:

The general limits of work, as shown on the Contract Plans, are as follows:

- Exit 32 Interchange Southbound off-ramp at MM 31.6 in the city of Biddeford, Maine.

2) General Description:

The work consists of modifications to the Exit 32 Interchange southbound off-ramp at MM 31.6 in the Town of Biddeford, Maine. The work includes milling, earthwork, pavement, signing, guardrail, drainage, electrical work, and maintenance of traffic and all other work incidental thereto in accordance with the Plans and Specifications.

3) Bid:

a) Opening: May 19, 2026 at 10:00 A.M. at MTA Headquarters 2360 Congress Street, Portland.

b) We now accept electronic bids for bid packages posted on the Bid Express website. Electronic bids do not have to be accompanied by paper bids. Until further notice, dual bids (one paper, one electronic) will be accepted, with the paper copy taking precedence.

c) All bid and contractual questions shall be directed to Nate Carll. Phone No.: (207) 482-8115. E-Mail: ncarll@maineturnpike.com.

d) All questions on plans and specifications shall be in writing. To submit questions, use the electronic Request For Information (RFI) tab on the MTA website for Contract 2026.19 at <https://www.maineturnpike.com/projects/construction-contracts>. Questions are due by 5:00 P.M. on May 12, 2026. Questions received after this may not be answered.

e) Bids will be accepted from prime Contractors **prequalified** by the Maine Department of Transportation for Highway Construction Projects with an electrical subcontractor **prequalified** by the Maine Department of Transportation for Traffic Signals and Lighting Projects.

4) Notification:

a) Contractor shall notify and obtain approval from the Authority prior to visiting the Project sites for field inspection. The contact person is Mr. Steve Tartre at startre@maineturnpike.com.

- 5) Contract Specifications
 - a) The Specifications are divided into three parts: Part I, Supplemental Specifications, Part II, Special Provisions, Part III – Appendices (Permits).
 - b) The Maine Turnpike Supplemental Specifications are additions and alterations to the 2014 Maine Department of Transportation Standard Specifications and are available on MTA’s website.
- 6) Construction Schedule/Substantial Completion:
 - a) May 28, 2026 – Contract Award Date
 - b) October 23, 2026 – Substantial Completion
 - c) November 20, 2026 – Contract Completion Date
- 7) Holidays (Special Provision 101.2)
 - a) Juneteenth (June 19, 2026)
 - b) Independence Day (July 4, 2026)
 - c) Indigenous Peoples Day (October 12, 2026)
- 8) Maine Department of Labor – Fair Hourly Wages (Special Provision 104.3.8)
 - a) Wage rates for Highway and Earthwork for York County are found within 104.3.8 Wage Rates and Labor Laws. Contractors will be required to meet the 2026 fair hourly wages.
- 9) Cooperation With Other Contractors (Special Provision 104.4.7):
 - a) MTA Contract 2022.07 – Interchange Improvements – Saco, MM 34.7 to MM 36.6
 - b) MTA Contract 2026.10 – Bridge, Toll, and Culvert Repairs – Various Locations
- 10) Permit Requirements (Special Provision 105.8.2)
 - a) The Project has been authorized under Section 404 of the Clean Water Act, through the U.S. Army Corps of Engineers Nationwide Permit 14 Linear Transportation Projects. The Project is subject to the 2026 Nationwide Permits General Conditions, the 2026 Nationwide Permits – New England District Regional Conditions, and the associated State of Maine Water Quality Certification and Coastal Zone Management Determination. Copies of these documents are provided in Appendix A. The Project is also subject to project-specific conditions required by the U.S. Army Corps of Engineers authorization. A copy of the U.S. Army Corps of Engineers authorization and any project-specific conditions has also been provided in Appendix B. A signed copy of the Start Work Notification Form must be sent by the Maine Turnpike Authority to the Army Corps Maine Project Office at least two weeks before work commences. The Contractor is responsible for executing all work under this contract in accordance with the U.S. Army Corps of Engineers Nationwide Permit 14 authorization.
 - b) The Project is subject to the Stormwater Memorandum of Agreement for Stormwater Management Between the Maine Department of Transportation, Maine Turnpike Authority, and Maine Department of Environmental Protection (Stormwater MOA). Under the Stormwater MOA, all MTA construction, operation, and maintenance activities are subject to Maine Stormwater Law

Basic Standards through implementation of MaineDOT's Best Management Practices for Erosion and Sedimentation Control (MaineDOT BMP Manual), which are the Contractor's responsibility to implement.

- c) The LOD for this Contract has been estimated to be 1.90 acres and a project LOD plan is included in the plans. The Contractor shall prepare a LOD plan illustrating the Contractor's proposed limit of earthwork disturbance. This Plan shall be submitted for review and approval to the Resident within 14 days of Contract award.

11) As-Built Plans (Special Provision 105.11)

- a) The Contractor shall provide the Authority with as-built plans in PDF and MicroStation or AutoCAD. The as-built plans shall note changes to the bid documents, including, but not limited to pavement, concrete, barrier, guardrail, culverts, drainage, foundations, wiring, signs, etc. The as-builts shall also provide GPS accurate locations of all underground work. Submittal of Draft, Final Draft, and 100% as-built plans to the Resident shall be conditions of Mobilization payment, Retainage reduction, and Final Payment as noted in Special Provision 108.

12) Prosecution of Work (107.4.6)

- a) The following activities shall not begin until the date specified:
 - i) Exit 32 southbound off ramp shall not begin until on or after July 20, 2026.

13) Limits of Operations (Special Provision 107.4.7)

- a) All ramp closures shall be at night. Ramps shall be opened to traffic when work is not occurring. Nighttime closures will be allowed between 9:00 p.m. to 5:00 a.m. or as approved by the Resident.
- b) The Contractor shall progress the work in a manner that minimizes disruption to the public to the extent practical.

14) Mobilization Payment (Special Provision 108.2.3)

- a) The second paragraph is deleted in its entirety and replaced with the following: Upon approval of all pre-construction submittals required for approval by this Contract, including those listed in Section 104.4.2 – Preconstruction Conference, the Contractor will receive payment of 50% of the Lump Sum price for Mobilization, not to exceed 5% of the Bid less the amount bid for Mobilization. After the Authority determines that the Work is 50% complete and the Contractor has submitted a Draft (50%) as-built submittal of all underground work to date (within the prior 30 day pay period) as defined in Special Provision 105., the Contractor will receive the other 50% of the Lump Sum price for Mobilization, not to exceed 5% of the Bid less the amount bid for Mobilization. Any remaining Mobilization will be at the completion of physical work.

15) Retainage (Special Provision 108.3)

- a) The seventh paragraph is deleted in its entirety and replaced with the following: When requested by the Contractor, an 80 percent reduction of retainage will be considered by the Authority when the Project is substantially complete and the Contractor has submitted a Final Draft (98%) as-built submittal of all underground work, in accordance with Special Provision 105. When requesting a reduction, the Contractor shall include an explanation of the outstanding Work, an estimate of the cost to complete the Work, and a schedule for completing the Work. Seasonal limitations as well as warranty and establishment periods (for vegetation) shall be addressed.

16) Specific Contract Items

a) Section 202 – Removing Structures and Obstructions

- i) A 7 ft rotary drum shall be used for removing pavement surface for ramp travel lanes.

b) Section 403 – Hot Mix Asphalt Pavement

- i) The required PGAB for Item 403.2081 (12.5 m surface, polymer modified) shall be 70E-28.

c) Section 409 – Bituminous Tack Coat

- i) The equipment shall be maintained to provide a consistent application rate and uniform spray that is breaking correctly and is free from clotting throughout the project. If the product is not breaking correctly or if clotting is observed, the contractor shall cease production until necessary maintenance can be completed.

d) Section 627- Pavement Markings

- i) Contractor shall use Temporary Pavement Marking Lines (paint) and Temporary Pavement Marking Tape during maintenance of traffic operations.
 - (1) Temporary tape shall be used on proposed surface pavement and shall be a 1' piece of temporary pavement marking tape spaced at 10' center to center.
 - (2) Temporary Pavement Marking Lines (paint) shall be used on milled pavement, shim, base, and/or intermediate pavement lifts.

e) Section 652 – Maintenance of Traffic – General

- i) Traffic Counts will be conducted by the MTA Resident to adjust the start and end times of allowable closures to provide the Contractor with maximum duration work windows.
- ii) Weekend work requires approval from the Authority.
- iii) Equipment Moves are allowed during low traffic periods as approved by the Authority.
- iv) Portable light towers will be required to illuminate the night construction work area.
- v) 652 SP replaces the MTA 2016 Supplemental Specification Section 652, substantive revisions have been “bolded”.
- vi) Contractor may use cones for all tangents through work zones after the first 240 feet. Drums shall be used within the first 240 feet downstream of a break for any ramp.
- vii) The Contract will furnish, operate, and maintain at Automated Trailer Mounted Speed Limit Signs for project use. The automated speed sign shall be required when there is a Work Zone Speed Limit in place. Payment for Automated Trailer Mounted Speed Limit Signs shall be incidental to the Maintenance of Traffic Control Devices item. Data will be collected.
- viii) Daytime lane closures shall be a maximum of three (3) miles.
- ix) The maximum time for which traffic may be stopped and held for an equipment move across mainline or ramp at any single time shall be five (5) minutes. The Contractor shall reimburse

the Authority at a rate of \$500 per minute for each minute in excess of the five-minute allowance.

17) Construction Staging

- a) Existing guardrail shall remain during Stage 1 construction.
- b) Contractor shall maintain sheet flow in any regraded areas of Stage 1 construction.
- c) For any drop of more than 1 ½" that will be present during active traffic place a wedge of gravel or millings placed on a 4:1 or flatter slope with drums.
- d) Tie-ins between existing ramp and proposed ramp will be made with one or more mill and overlay operations (See Stage 3A Plans - Sheet MT-30 and Cross Sections).

18) Questions

- a) Questions received prior to pre-bid conference will be answered with Addendum #1.

MAINE TURNPIKE AUTHORITY

Pre-Bid Conference

CONTRACT 2026.19

RAMP IMPROVEMENTS

BIDDEFORD EXIT 32

MM 31.6

May 5, 2026 2:00 PM

NAME (PRINT)	COMPANY	PHONE	EMAIL
Joe Howe	Stantec	207-887-3501	Joe.howe@stantec.com
Amanda Scudder	Stantec	207-887-3419	Amanda.Scudder@stantec.com
Lancon Fleming	MTA	207 459 8688	lfleming@maineturnpike.com
Nate Carl	MTA	207-482-8115	Ncarll@maineturnpike.com
Matt Callahan	Glidden Ex & Paving	(207) 699-9592	mattegyl@gliddenpaving.com
Sulo Burbank	RJ Grandin & Sons	207 864 1147	estimators@rjgrandin.com
Chad Toothaker	Piatt and Sons, Inc.	207-345-3311	chad@piattandsons.net
GLENN ADAMS	SARGENT	207-215-2055	GADAMS@SARGENT.US
Kerby Ouellette	CRR	207-540-2577	KOuellette@CRRme.com
Angelo Salvaggio	CRR	207-318-1225	Asalvaggio@crrme.com



Maine
Turnpike
Authority

MTA 2026.19

RAMP IMPROVEMENTS
BIDDEFORD EXIT 32
MM 31.6

Pre-Bid
Conference

May 5, 2026

1) Location

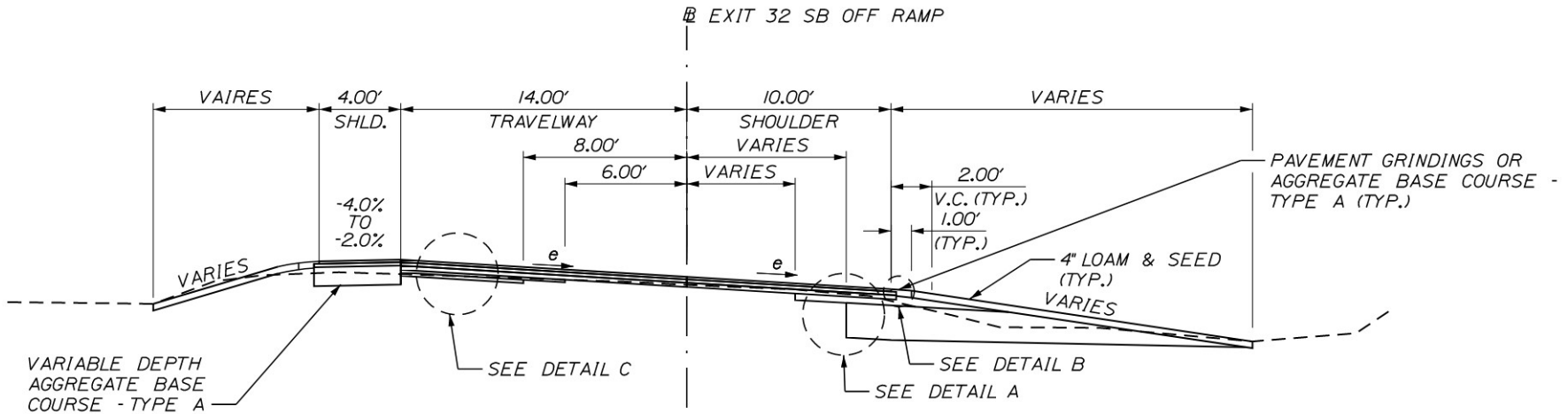
I-95 Exit 32 Southbound Off-Ramp, MM 31.6 in Biddeford, Maine



2) General Description

The paving work includes:

- Milling of existing ramp

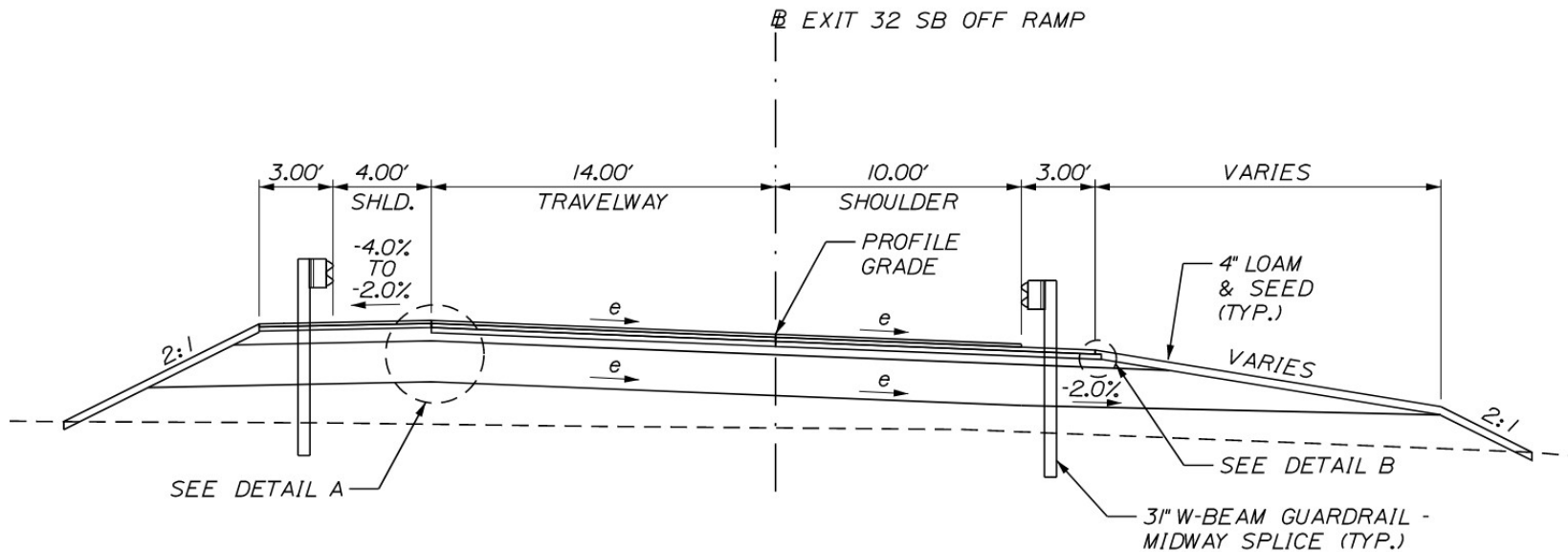


EXIT 32 SB OFF RAMP - MILLING

2) General Description

The paving work includes:

- Full Depth construction through off-alignment portion



EXIT 32 SB OFF RAMP - WITH GUARDRAIL

3) Bid

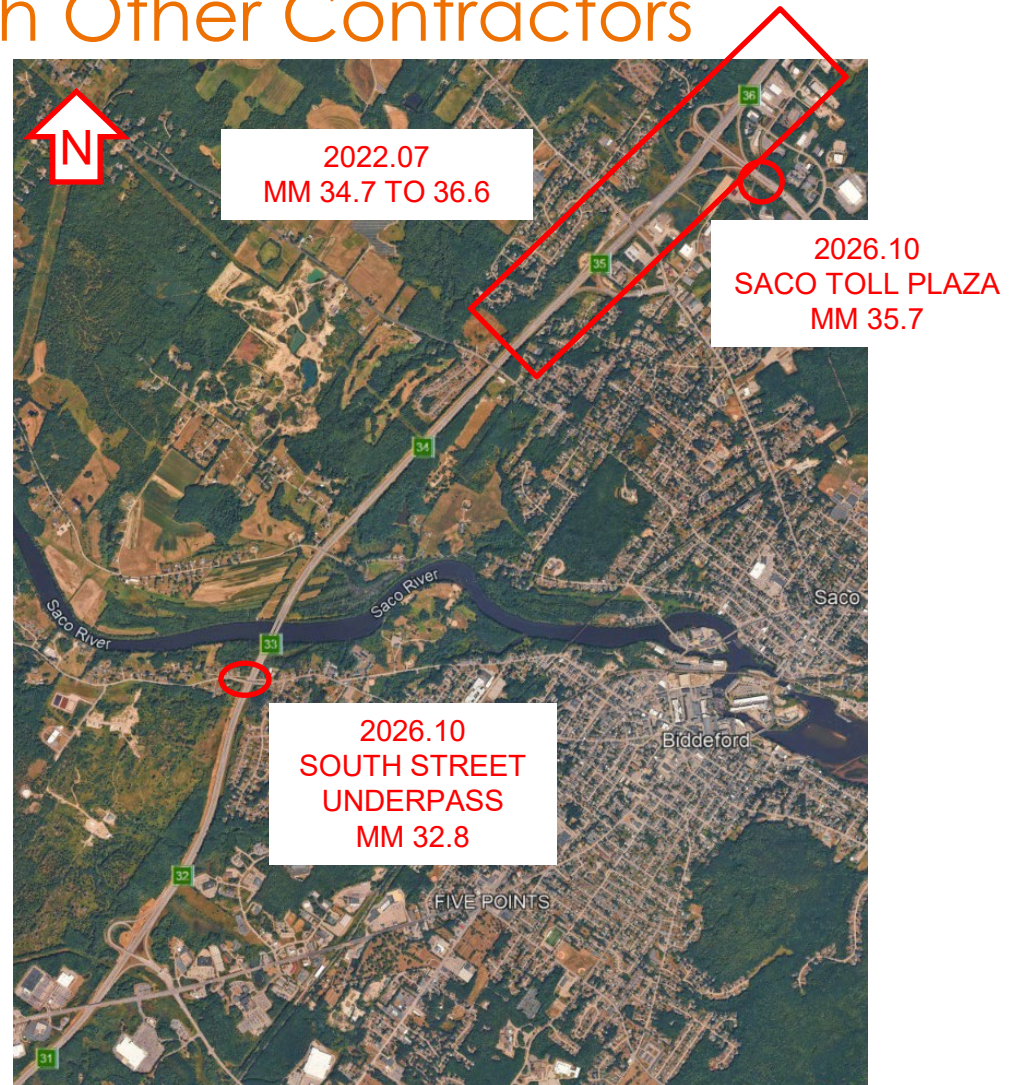
- Bid opening: May 19, 2026, at 10:00 A.M.
- All bid & contractual questions should be submitted through electronic Request For Information (RFI) tab on the MTA website for Contract 2026.19
- Questions due by May 12, 2026 at 5:00 P.M.

6) Construction Schedule/Substantial Completion

- Contract Award Date: **May 28, 2026**
- Substantially Complete: **October 23, 2026**
- Contract Completion Date: **November 20, 2026**

9) Cooperation With Other Contractors

- **MTA Contract 2022.07** – Interchange Improvements – Saco, MM 34.7 to MM 36.6
- **MTA Contract 2026.10** – Bridge, Toll, and Culvert Repairs – Various Locations



10) Permit Requirements

- **Clean Water Act** (Appendix A) and **US Army Corps project specific conditions** (Appendix B)
- The LOD for this Contract has been estimated to be 1.90 acres. The Contractor shall prepare a LOD plan illustrating the Contractor's proposed limit of earthwork disturbance and **submit for review and approval to the resident within 14 days of Contract Award.**
- **Stormwater Memorandum of Agreement for Stormwater Management** Basic Standards through MaineDOT's Best Management Practices for Erosion and Sedimentation Control (MaineDOT BMP Manual).

12) Prosecution of Work

The following activities shall not begin until the date specified:

- Exit 32 southbound off ramp shall not begin until on or after July 20, 2026.

16) Specific Contract Items

e) Section 652 – Maintenance of Traffic - General

- i. Traffic Counts will be conducted by the MTA Resident to adjust the start and end times of allowable closures to provide the Contractor with maximum duration work windows.
- ii. Weekend work requires approval from the Authority.
- iii. Equipment Moves are allowed during low traffic periods as approved by the Authority.

16) Specific Contract Items (continued)

e) Section 652 – Maintenance of Traffic - General

- vii. Contractor may use cones for all tangents through work zones after the first 240 feet. Drums shall be used within the first 240 feet downstream of a break for any ramp.
- viii. The Contract will furnish, operate, and maintain at Automated Trailer Mounted Speed Limit Signs for project use. The automated speed sign shall be required when there is a Work Zone Speed Limit in place. Payment for Automated Trailer Mounted Speed Limit Signs shall be incidental to the Maintenance of Traffic Control Devices item. Data will be collected.

17) Construction Staging

- Existing guardrail shall remain during Stage 1 construction.
- Contractor shall maintain sheet flow in any regraded areas of Stage 1 construction.
- For any drop of more than 1 ½” that will be present during active traffic place a wedge of gravel or millings placed on a 4:1 or flatter slope with drums.
- Tie-ins between existing ramp and proposed ramp will be made with one or more mill and overlay operations (See Stage 3A Plans - Sheet MT-30 and Cross Sections).



QUESTIONS?



**Maine
Turnpike
Authority**