

**MAINE TURNPIKE AUTHORITY**

**ADDENDUM NO. 1**

**CONTRACT 2025.13**

**EXIT 45 INTERCHANGE PAVING**

**The bid opening date is May 20, 2025 at 11:00 A.M.**

The following changes are made to the Proposal, Specifications and Plans.

**PROPOSAL**

Proposal Sheets P-3, P-4, and P-5 shall be deleted and replaced with Proposal Sheets P-3 (Revised), P-4 (Revised), and P-5 (Revised) respectively.

- The Item 626.122 is deleted.
- The description and quantity for Item 645.511 are changed.

**SPECIFICATIONS**

Special Provision 645 Highway Signing, pages SP-66 and SP-67 shall be deleted and replaced with pages SP-66 (Revised) and SP-67 (Revised) respectively.

Special Provision 645 Highway Signing, pages SP-67-A and SP-67-B are added to the Special Provisions. These pages clarify the details of standard pay item 645.305 Sign Mounted Beacon Array.

Special Provision 403 on page SP-37 shall remove the 1 for the Wearing Course on Item Number 403.2081 to become 403.208.

Special Provision 652 on page SP-68, after the sentence "The shimming and paving at Exit 45 bridge can have both the southbound ramps closed from 9:00pm to 5:00am.", add "All ramp shut downs shall be done between 9:00pm to 5:00am upon approval by the Authority."

**PLANS**

Plan sheet 12 of 25, Highway Plan, shall be deleted and replaced with revised sheet 12 of 25, Highway Plan which includes Electrical Revisions, dated 05/2025. See plan for Revision Cloud.

## ATTACHMENTS

- (This document - Addendum #1 (2 pages))
- Proposal sheets – (3 pages)
- Specification sheets – (4 pages)
- Plan sheets – (1 page)
- Pre-Bid Agenda – (3 pages)
- Pre-Bid Sign In – (1 page)

**Notes:** The above items shall be considered as part of the bid submittal.

The total number of pages included in this addendum is eleven (14) pages.

All bidders are requested to acknowledge the receipt of the Addendum No. 1 by signing below and emailing this sheet to Nathaniel Carll, Purchasing Department, Maine Turnpike Authority at ncarll@maineturnpike.com. Bidders are also required to acknowledge receipt of this Addendum No. 1 on Page P-6 of the bid package.

---

Business Name

---

Print Name and Title

---

Signature

---

Date

Very truly  
yours,

MAINE TURNPIKE AUTHORITY

---

Nathaniel Carll  
Purchasing Department  
Maine Turnpike  
Authority

Item No	Item Description	Units	Approx. Quantities	Unit Prices in Numbers		Bid Amount in Numbers	
				Dollars	Cents	Dollars	Cents
BROUGHT FORWARD:							
520.233	Asphaltic Plug Joint - Exit 47	Linear Foot	100				
610.08	Plain Riprap	Cubic Yard	20				
615.07	Loam	Cubic Yard	230				
618.14	Seeding Method Number 2	Unit	19				
619.1201	Mulch - Plan Quantity	Unit	19				
619.1202	Temporary Mulch	Lump Sum	1				
627.712	White Or Yellow Painted Pavement Marking Line	Linear Foot	2,100				
627.745	6" White or Yellow Polyurea Pavement Marking Line	Linear Foot	1,350				
627.812	Temporary Raised Pavement Markers	Each	500				
627.944	Pavement Markings - Recessed Tape - Words, Arrows, Stop Bars	Square Foot	210				
629.05	Hand Labor, Straight Time	Hour	20				
631.10	Air Compressor (including operator)	Hour	10				

CARRIED FORWARD:

Item No	Item Description	Units	Approx. Quantities	Unit Prices in Numbers		Bid Amount in Numbers	
				Dollars	Cents	Dollars	Cents
BROUGHT FORWARD:							
631.11	Air Tool (including operator)	Hour	10				
631.12	All Purpose Excavator (including operator)	Hour	10				
631.133	Skid Steer (including operator)	Hour	10				
631.172	Truck-large (including operator)	Hour	20				
645.305	Sign Mounted Beacon Array	Lump Sum	1				
645.511	30" x 36" Radar Activated Flashing LED Right Chevron Warning Signs	Each	7				
652.361	Maintenance of Traffic Control Devices - Exit 45	Lump Sum	1				
652.3611	Maintenance of Traffic Control Devices - Exit 47	Lump Sum	1				
652.41	Portable - Changeable Message Sign	Each	4				
652.45	Truck Mounted Attenuator	Each	2				
656.50	Baled Hay, In Place	Each	5				
656.632	30 Inch Temporary Silt Fence	Linear Foot	700				

CARRIED FORWARD:

Item No	Item Description	Units	Approx. Quantities	Unit Prices in Numbers		Bid Amount in Numbers	
				Dollars	Cents	Dollars	Cents
BROUGHT FORWARD:							
659.10	Mobilization	Lump Sum	1				
TOTAL:							

SPECIAL PROVISIONSECTION 645HIGHWAY SIGNING

(Radar Activated Flashing LED Right Sign)

645.01 Description

This work consists of furnishing and installing new solar powered 30" x 36" Radar Activated Flashing LED Right Chevron Warning Signs at the locations shown on the plans or established by the Resident and in conformance with manufacturer's recommendations.

645.021 Materials

The Radar Activated LED Right Chevron Warning Signs shall be TrafficCalm by Pelco Solutions or approved equal and include the following components:

- 30" x 36" Chevron Blinker Signs
- Synchronized communication set for Sequential Flashing
- Speed Radar to activate signs
- 2.4 GHz wireless interconnection between signs or as approved by MTA Director of ITS

The system shall have the following specifications:

All Signing Materials	Shall meet section 719 – Signing Materials
Sign Substrate	Highway Grade Aluminum
Reflective Sheeting	3M™ Type XI Prismatic
MUTCD Compliance	MUTCD Part 2 Compliant
Battery Lifespan	Up to 5 years
Autonomy – Functionality without Charge	Up to 28 days in 24/7 operation
Flash Pattern	MUTCD Compliant
LED Type	High Power Luxeon – 1 watt
LED Life Expectancy Warranty	Over 100,000 hours
Smart Activation	Options 24/7 continuous
Time clock activation	(Windows based software programmable)
Wireless control activation	
Vehicle detection activation	
NEMA 4x Rated	

645.06 Installation

The sign shall be complete, with all hardware and tools, and ready to be installed on a 6X6 square yielding sign post.

A total of seven signs are included in the contract. Two of these signs, one controller unit, and one collaborator unit, shall be complete, with all hardware and tools, and ready to be installed. These units shall be delivered to the Resident for use by the Authority as spare units, ready for immediate deployment if needed.

#### 645.08 Method of Measurement

Radar Activated Flashing LED Right Chevron Warning Signs shall be measured by each unit, complete in place, or delivered to the Resident for the two spares, and accepted.

#### 645.09 Basis of Payment

The accepted quantity of Radar Activated Flashing LED Right Chevron Warning Signs shall be paid for at the contract unit price which shall include but not limited to furnishing, sign posts, solar power system and associated wiring, wireless communication, installation, and all materials, labor, equipment and incidentals necessary to complete the work.

Payment will be made under:

#### Pay Item

#### Pay Unit

645.511 30" x 36" Radar Activated Flashing LED Right Chevron Warning Signs Each

SPECIAL PROVISION

SECTION 645

HIGHWAY SIGNING

(Sign Mounted Beacon Array)

The provisions of Section 645 of the Standard Specifications shall apply with the following additions and modifications:

645.064 Installation of Sign Mounted Beacon Array

Beacons installation shall include a NEMA 4X Stainless Steel Cabinet with 15-amp single pole breaker, flasher relay, 240V to 120V stepdown transformer, and 15-amp two pole breaker. The proposed cabinet layout shall be submitted for review and approval by the Resident.

NEMA Cabinet shall be mounted to a 6X6 pressure treated (PT) post meeting the requirements of section 720.12

Conduit shall be installed between the proposed NEMA Cabinet, existing highway lighting junction box, and existing light pole and shall be 2" Schedule 80 PVC conduit or approved equal.

Power for the flashing beacons will come from the adjacent highway lighting junction box.

Splices in junction boxes shall be made with Burndy UGS350ULDB Direct Burial/Submersible Splice Wire Range #12 AWG – 350KCMIL connectors for the appropriate wire count only.

Mounting system to attach the proposed Beacon Array to the existing highway light standard shall be proposed by the Contractor and submitted to the resident for review and approval.

645.08 Method of Measurement

All beacons installed on an individual post/pole shall constitute a single installation. Each installation (Sign Mounted Beacon Array) shall be measured by the lump sum, complete in place and accepted.

645.09 Basis of Payment

Sign Mounted Beacon Arrays will be paid for at the contract lump sum price, which payment will be full compensation for furnishing all materials including, but not limited to the 120-volt 12" – LED signal lights, NEMA controller cabinet, wood post, mounting hardware, couplings, brackets, conduit bodies, wiring, conduit, transformers, flasher relays, breakers, and all appurtenances and incidentals required for a complete and functioning installation and for



furnishing all tools and labor necessary for completing the installation. Array must meet all testing and connection requirements of this section.

Payment will be made under:

<u>Pay Item</u>	<u>Pay Unit</u>
645.305      Sign Mounted Beacon Array	Lump Sum

# MAINE TURNPIKE AUTHORITY

Pre-Bid Conference

CONTRACT 2025.13

Exit 45 Interchange Paving

Bridge Approaches and

Northbound On Ramp

May 8, 2025 11:00 AM

1) Location:

- a) Exit 45 Bridge Approaches on the Maine Turnpike.
- b) Exit 45 Northbound On Ramp.
- c) Exit 47 Interchange Asphaltic Plug Joints.

2) General Description:

The pavement rehabilitation work consists of milling, shimming and paving the northbound on ramp at Exit 45 and both bridge approaches and two asphaltic plug joints at Exit 45. There are also asphaltic plug joint work at the four corners of the Exit 47 interchange bridge. Earthwork, electrical work, pavement markings, signing and temporary pavement markings, maintenance of traffic and all other work incidental thereto will be completed in accordance with the Plans and Specifications.

3) Bid Opening:

- a) May 20, 2025 at 11:00 A.M. at MTA headquarters 2360 Congress Street, Portland.
- b) All bid and contractual questions shall be directed to Mr. Nathaniel Carll. Phone No. (207) 871-7771 Ext. 115.
- c) All questions on plans and specifications shall be in faxed or emailed to Nathaniel Carll, Purchasing Manager(ncarll@maineturnpike.com), of the Maine Turnpike Authority. ~~Fax No. (207) 871-7739.~~

4) Notification:

- a) Contractor shall notify and obtain approval from the Authority prior to visiting the Project site for field inspection. The contact person is Mr. Steve Tartre please send an email to Steve T. (startre@maineturnpike.com) in lieu of a phone call.

403.2081

5) Construction Schedule/Prosecution of Work:

- a) After Contract Execution.
- b) August 29, 2025 – Substantial Completion, (defined in Special Provision Section 107.1.1 Interim Substantial Completion and Substantial Completion(SP-5).
- c) September 19, 2025 - Contract Completion date.

6) Maine Department of Labor – Fair Hourly Wages (Special Provision 104.3.8):

- a) Highway and Earthwork wages (SP-3).

7) Cooperation with Other Contractors (MTA Supplemental Specification 104.4.7)(SP-6):

8) General Requirements

- a) U-Turns at toll plazas and median openings not allowed.
- b) Class III vests.

9) Permit Requirements (None)

- a) Follow Best Management Practices.

10) Limitations of Operations (Special Provision 107.4.7 SP-5,6 and 652 SP-68):

- a) Exit 45 Bridge Approaches work can be done with limited closures on both Southbound ramps- see Special Provision 652
- b) Exit 45 Northbound On Ramp closure-See 652 (9:00pm-5:00am.)-will be in an addendum.
- c) Exit 45 and Exit 47 asphaltic plug joints can be done with one SB ramp closure at a time- See 652 (9:00pm-5:00am.)-will be in an addendum.

11) Traffic Control (Supplemental Specification and Special Provision Section 652):

- a) Contractor is responsible for supplying all traffic control devices.
- b) Contractor is responsible for placement, relocation, removal and maintenance of traffic control devices. Maintenance of traffic control devices is a 24-hour a day, seven day per week, responsibility. Contractor shall inspect devices as required.
- c) Stoppages of traffic for moving heavy or slow equipment across turnpike (stoppages less than five minutes)
  - i) Install signs “Expect Stopped Traffic” and “ Be Prepared to Stop”
  - ii) Fee of \$500 per minute for each minute in excess of the five minute allowance.
  - iii) Requests for short term traffic stoppages (up to 5 minutes) shall be submitted two days in advance of scheduled stoppage. Request subject to approval by MTA.
- d) All signs, which do not apply to current construction activity, shall be 100% covered or removed in accordance with the plans. This includes any speed limit signs when work zone speed is in operation.

12) Specific Contract Items

- a. MTA Supplemental Specifications are on MTA website.
- b. 520.232 Asphaltic Plug Joint at Exit 45-see plan details.
- c/ 403 HMA Items – see typical section.
- d. 202.220 Grooved pavement strips.
- e. 645.511 Radar Activated chevrons – See special Provisions.

RT SIGN

ADD  
LED  
FLASHING  
SOLAR

POLYMER

13) Addendums will be issued early next week.

- a) Any pertaining to the Pre-bid Meeting. ✓
- b) Exit 45 NB on ramp electrical. ✓
- c) Exit 47 Ramp Closure Times. ✓
- d) Exit 45 NB On Ramp Closure Times. ✓

9pm - 5am

14) Other

15) Questions

END OF BUSINESS  
QUESTIONS 15<sup>th</sup>



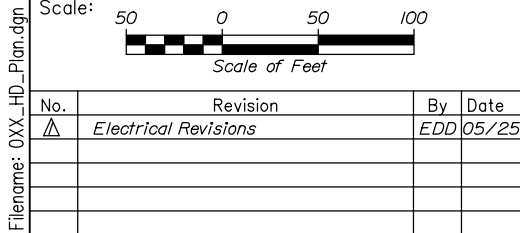
**Exit 45 Interchange Paving Bridge Approaches and Northbound on Ramp**  
**MM 45.0**

# PREBID

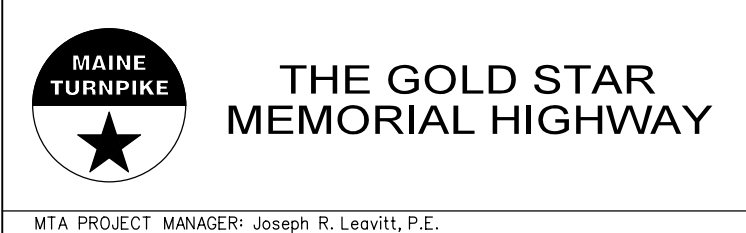
Please Print

[illegible]

Filename: 0XX\_HD\_Plan.dgn



HNTB CORPORATION  
82 Running Hill Road, Suite 201  
South Portland, ME 04106  
TEL (207) 774-5155  
FAX (207) 228-0909



EXIT 45  
INTERCHANGE PAVING  
HIGHWAY PLAN

---

CONTRACT: 2025.13

SHEET NUMBER: PL-01

12 OF 25