

# **MAINE TURNPIKE AUTHORITY**

## Pre-Bid Conference

### CONTRACT 2026.02

#### Pavement Rehabilitation and Safety Improvements

#### MM 27.4 TO MM 30.3

#### January 8<sup>th</sup>, at 10:00 am

1) Locations:

- a) The general limits of work are MM 27.4 to MM 30.3 – Milling and Paving travel lanes and shoulders, Median Restoration, Guardrail adjustments, and general Drainage improvements.
- b) Exit 36 Rumble Strips– Centerline and Grooved Pavement Strips

2) General Description:

The pavement rehabilitation work consists of milling and paving three travel lanes and the median and outside shoulders for both northbound and southbound approaches. There are short sections where the shoulder pavement will be reconstructed. Excess material in the median will be removed and catch basins shall be cleaned to restore proper drainage. Noted catch basin tops will be replaced, and concrete aprons will be installed around the basins where required. Guardrail height will be adjusted as necessary, with damaged sections of guardrail being replaced where it is needed. Pavement markings, maintenance of traffic and all other work incidental thereto will be completed in accordance with the Plans and Specifications.

3) Bid:

- a) Bid deadline January 20, 2026 at 10:00 AM at MTA headquarters 2360 Congress Street, Portland. All registered plan holders will be sent a Zoom Link/Call in number for the bid opening.
  - b) For general information regarding Bidding and Contracting procedures, contact Nate Carll, Purchasing Manager, at (207)482-8115 or [ncarll@maineturnpike.com](mailto:ncarll@maineturnpike.com).
- 4) For Project specific information, email all questions to Nate Carll, Purchasing Manager, at [ncarll@maineturnpike.com](mailto:ncarll@maineturnpike.com). Responses will not be prepared for questions received by telephone.

5) Notification:

- a) Contractor shall notify and obtain approval from the Authority prior to visiting the Project sites for field inspection. The contact person is Mr. Steve Tartre at (207) 871-7771, ext. 144 or [startre@maineturnpike.com](mailto:startre@maineturnpike.com).

6) Contract Specifications:

- a) The Specifications are divided into three parts: Part I, Supplemental Specifications, Part II, Special Provisions and Part III, Appendices. Contractor is to review updated Supplemental Specifications.
- b) The Maine Turnpike Authority Supplemental Specifications are additions and alterations to the 2014 Maine Department of Transportation Standard Specifications. They are available online at <http://www.maineturnpike.com/Projects-Planning/Construction-Contracts.aspx>

7) Construction Schedule/Prosecution of Work:

- a) January 22, 2026 – MTA Board to consider Contract Award
- b) November 21, 2026 – Substantial Completion
- c) May 22, 2026 – Substantial Completion for Exit 36 Rumble strips
- d) December 19, 2026 – Final Completion
- e) The Milling activities shall not begin until all Guardrail Work, Median Restoration, and the Riprap Installation are complete.

8) Permit Requirements (Special Provision 105.8.2):

- a) Compliance with the erosion and sedimentation control requirements outlined in this Contract is required by the Contractor.
- b) The Contractor shall comply with the erosion and sedimentation control requirements of the Basic Standards of Maine Stormwater Management Law, the Maine Pollutant Discharge Elimination System General Permit for stormwater discharge associated with construction activity (Maine Construction General Permit), the General Permit for the Discharge of Stormwater from Maine Department of Transportation and Maine Turnpike Authority Municipal Separate Storm Sewer Systems, and the Memorandum of Agreement for Stormwater Management Between the Maine Department of Transportation, Maine Turnpike Authority, and Maine Department of Environmental Protection. The Contractor will comply with these erosion and sedimentation control requirements through implementation and adherence to the current version of the Maine Department of Transportation's Best Management Practices for Erosion and Sedimentation Control.

9) General Requirements

- a) U-Turns at toll plazas and median openings are not allowed.
- b) Contractor access to and from the mainline shall not negatively impact mainline traffic flow. The Contractor may be required to establish lane closures to provide for safe access. Refer to Special Provision 652, Specific Project Maintenance of Traffic Requirements, for lane closure restrictions.
- c) All vehicles used on the Project, shall be equipped with amber flashing beacons in accordance with Supplemental Specification 652.3.4.
- d) All jobsite personnel shall wear a safety vest labeled as ANSI 107-2004 standard performance for Class 3 risk exposures at all times. This requirement also applies to truck drivers and equipment operators when out of an enclosed cab.
- e) Berm corrections for drop-offs of more than 3" must be made prior to shifting traffic adjacent to the shoulder requiring correction.

10) Traffic Control (Special Provision Section 652):

- a) Contractor is responsible for supplying all traffic control.
- b) Lane closures – See Traffic Tables – some daytime closure allowed

11) Specific Contract Items

- a) Special Provision 105.5.1- General Requirements
- b) Special Provision 661.10 – Toll Stipend

Questions – Questions need to be submitted by close of business on January 13, 2026

## 2026.02 Pre-Bid Meeting - January 8th, 2026

[illegible]

## **Contract 2026.02**

Pavement Rehabilitation and Safety Improvements  
MM 27.4 to MM 30.3

---

Pre-Bid Conference

January 8, 2026



MTA 2026.02

**TYLin**

# Locations

---

Pavement Rehabilitation  
and Safety Improvements  
(MM 27.4 to MM 30.3)

Rumble Strips –  
Centerline and Grooved  
Pavement Strips  
(Exit 36)





# General Description

---

## **Paving Rehabilitation and Safety Improvements**

- Mill and fill travel lanes and shoulders NB and SB
- Sections of shoulder reconstruction
- Berm corrections
- Catch basin top replacement
- Guardrail replacements and height adjustments

## **Addendum #1**

- Exit 36 Rumble Strips –  
Centerline and Grooved  
Pavement Strips



# Bid

---

- Bid Opening: **January 20, 2026 at 10 AM**
- Submit **bid and contractual questions** to:
  - Nate Carll
  - (207) 482-8115
  - [ncarll@maineturnpike.com](mailto:ncarll@maineturnpike.com)
- Submit **project specific questions** to:
  - Request for Information (RFI) tab at <https://www.maineturnpike.com/projects/construction-contracts>
- Questions to be submitted by **January 13, 2026 at 5 PM**



# Notification

- 
- Contractor shall **notify and obtain approval** from the Authority **prior to visiting the project sites** for field inspection
  - The contact person is **Steve Tartre**
    - (207) 482-8144
    - [startre@maineturnpike.com](mailto:startre@maineturnpike.com)





# Contract Specification

---

- **Part I:** Supplemental Specifications
- **Part II:** Special Provisions
- Available at  
<http://www.maineturnpike.com/Projects/Construction-Contracts.aspx>



# Construction Schedule/Prosecution of Work

---

- Award Date: **January 22, 2026**
- Substantial Completion: **November 21, 2026**
  - Rumble Strips – Centerline and Grooved Pavement at Exit 36 substantially completed by: **May 22, 2026**
- Final Completion: **December 19, 2026**



# Utility Coordination

---

## Underground Utilities

### *Kennebeck Sewer District*

- Contact: **Chris Johnson**
  - (207) 985-4741
  - [cjohnson@ksdistrict.org](mailto:cjohnson@ksdistrict.org)
- Address: 44 Water Street Kennebunk, ME, 04043



# Cooperation With Other Contractors

---

**Adjacent contracts** currently scheduled for the 2026 construction season include:

- **2025.16** – Haunch Removals – Ramp J, Ramp M, Route 101, Berwick Rd, Fletcher St, Alfred St
- **2026.14** - Asphaltic Plug Joints - River Road, Goddard Road, Exit 32, Exit 36, Dennett Road NB
- **2026.15** – Roadside Clearing



# Permit Requirements

---

- **Stormwater Memorandum of Agreement for Stormwater Management** Between the Maine Department of Transportation, Maine Turnpike Authority, and Maine Department of Environmental Protection
- The LOD for this Contract has been estimated to be **5.5 acres** (median restoration and berm correction). **This Plan shall be submitted for review and approval, to the Resident within 14 days of Contract award**
- **Compliance with the erosion and sedimentation control** is required by the Contractor
- The Contractor shall **comply with the conditions and compliance standards** outlined in the Stormwater MOA, and the Maine Construction General Permit



# General Requirements

---

- **U-Turns** at toll plazas and median openings are not allowed.
- Contractor access to and from the mainline **shall not negatively impact mainline traffic flow.**
- **All vehicles** used on the Project, shall be equipped with **amber flashing beacons**
- **Class III safety vests** shall be worn at all times
- **Berm corrections** for drop-offs of **more than 3”** must be made **prior to shifting traffic**
- **HMA plants** shall **meet the requirements** and **maintain current approval** from the Maine Department of Transportation



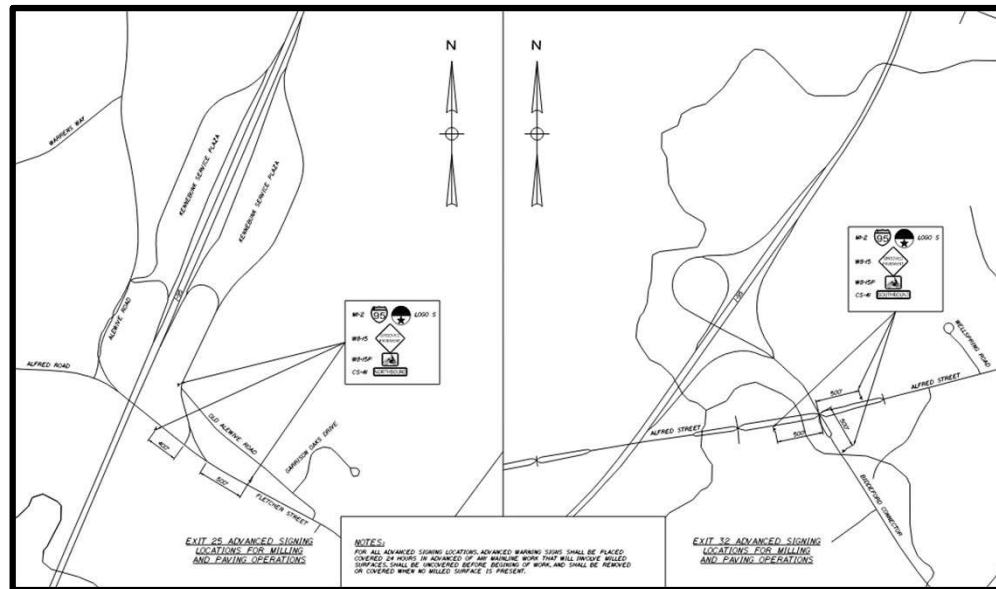
# Traffic Control (SP 652)

- 
- For lane and shoulder closures in excess of 3,000 feet containing multiple work zones a TMA shall be used at each work zone
  - The Contract will furnish, operate, and maintain Automated Trailer Mounted Speed Limit Sign(s) for project use. The automated speed sign shall be required when there is a Work Zone Speed Limit in place
  - The Authority will provide Project specific traffic control requirements and traffic control plans for use by the Contractor
  - Shoulder closures, lane closures, and lane shifts meeting the MUTCD guidelines, other than those shown in the plans, must be submitted for approval from the MTA prior to use in the construction operations
  - All signs shall be covered when not in use
  - Work at Exit 36 shall be completed with night ramp closures of Exit 36 SB On Ramp and Exit 35 SB Off Ramp in accordance with Special Provision 652. Maintenance of Traffic will be paid for under 652.361.



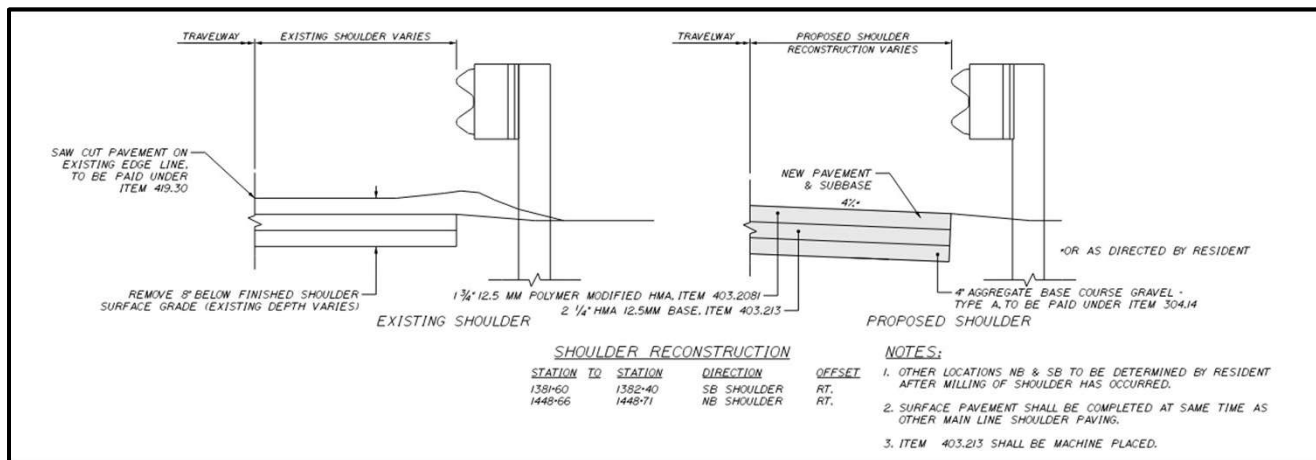


# Traffic Control Advance Signing Locations



# Specific Contract Items

- Shoulder Reconstruction



# Specific Contract Items

---

- 105.5.1 General Requirements

**The Contractor** will be provided with **six (6) electronic EZPass toll transponders or toll cards** for movement of vehicles, labor and equipment and for delivery of material essential to the Work. The use of the transponders/cards will be **limited to the Contractor's project superintendent and supporting traffic control staff**. The transponders/cards shall be distributed by the Contractor to the appropriate staff and used while working on the turnpike.

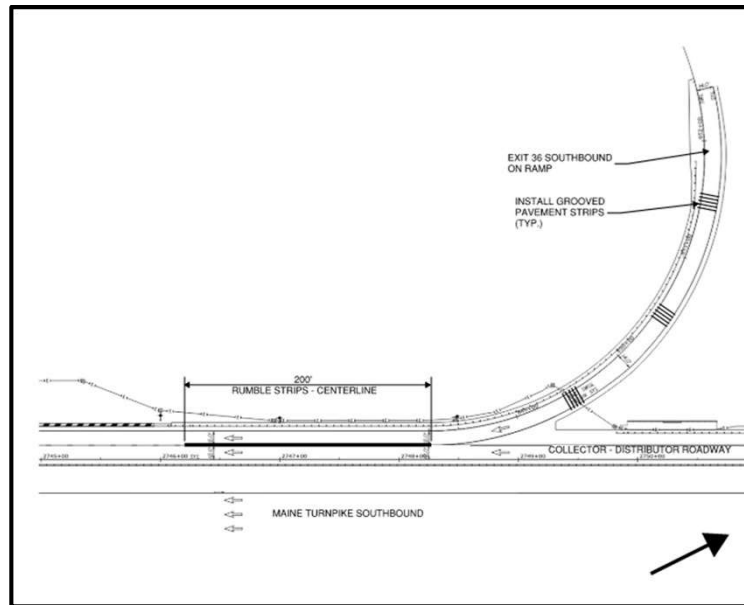
- Item 661.10: Toll Stipend

**All vehicles, other than those of the project superintendent and supporting traffic control staff that have been issued cards or transponders** as described in Special Provision 105.5.1, shall be **required to pay all applicable tolls**. This includes Contractor employees, subcontractors, equipment delivery, and material delivery. This pay item is intended to offset the cost for these vehicles.

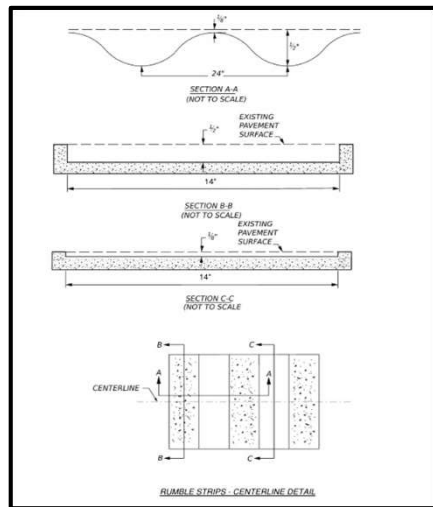


# Addendum – Rumble Strips at Exit 36

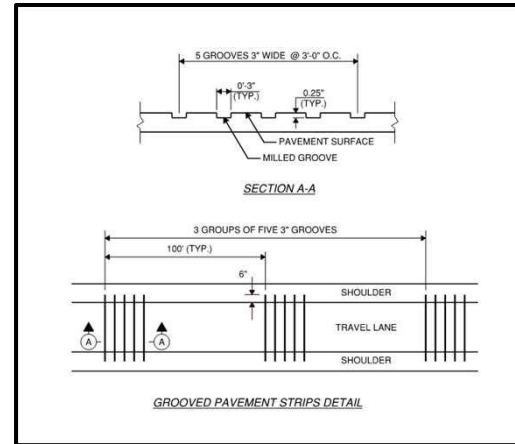
- Additional work that consists of **installing Rumble Strips – Centerline and Grooved Pavement Strips** at **Exit 36** is being amended to the contract.
- Work shall be completed with **night ramp closures** of **Exit 36 SB On Ramp** and **Exit 35 SB Off Ramp** in accordance with Special Provision 652. Maintenance of Traffic will be paid for under 652.361.



# Addendum – Rumble Strips (cont.)



Item 202.206 Rumble Strips - Centerline



Item 202.220 Grooved Pavement Strips

## QUESTIONS?

---

All questions due by **January 13, 2026** at **5 PM**

