

MAINE TURNPIKE AUTHORITY

ADDENDUM NO. 1

CONTRACT 2018.04

**CLEANING AND PAINTING STEEL STRUCTURES -
CIDER HILL ROAD UNDERPASS BRIDGE - MILE 6.2, CAPTAIN THOMAS ROAD
UNDERPASS BRIDGE - MILE 14.8, ROUTE 126 UNDERPASS BRIDGE - MILE 101.7 AND
HIGH STREET UNDERPASS BRIDGE - MILE 103.6**

The bid opening date and time remains Thursday, February 15, 2018 at 1:00 p.m.

The following changes are made to the Specifications.

PLANS

- Maintenance of Traffic Detail sheets 1, 2, and 5 of 5, in Appendix D, are deleted and replaced to incorporate the location of Temporary Portable Rumble Strips and Automated Trailer Mounted Speed Limit Signs. The updated Maintenance of Traffic Detail sheets 1, 2, and 5 of 5 are attached.

SPECIFICATIONS

- Special Provision Page SP-13: Page SP-13 is deleted in its entirety and replaced. See Section 506.01 Description, Route 126 Underpass Bridge – Mile 101.7, West Gardiner. Remove the bolsters from the cleaning and painting requirement; the bolsters are galvanized and should be protected during cleaning and painting.
- Special Provision Page SP-47: last sentence of paragraph three is deleted and replaced with, “See Maine Turnpike Authority Supplemental Specification, Section 652 Maintenance of Traffic (General) for additional information. This is a pen and ink change to be made to the Specification.

QUESTIONS

The following are questions asked and comments made at the pre-bid meeting held on February 2, 2018 or submitted to the Maine Turnpike Authority in writing. Answers to the questions are noted. Bidders shall utilize this information in preparing their bid.

Question 1: Is there a special form required for the Bid Bond?

Answer: No; the form is provided by the Bonding Company and is typically one of the standard AIA forms.

Question 2: Will testing be provided by MTA or a third-party firm?

Answer: Yes, Quality Assurance will be provided.

Question 3: What bearing types exist at these bridges?

Contract 2018.04
Addendum No.1
Page 1 of 11

Answer: Cider Hill Road Underpass has painted steel rocker and fixed bearings. Captain Thomas Road Underpass has elastomeric bearings with galvanized sole plate. Route 126 Underpass has galvanized bolsters and painted steel rocker and fixed bearings (bolsters are excluded from cleaning and painting). High Street Underpass has galvanized steel pot bearings.

Question 4: Will the MaineDOT 2014 Standard Specifications be used for this contract?

Answer: Yes, the November 2014 MaineDOT Standard Specifications will be used. Please refer to the inside cover of the Project Specification noting that “The Maine Turnpike Supplemental Specifications are additions and alterations to the 2014 Maine Department of Transportation Standard Specifications. See Subsection 100.1.”

Question 5: Is the Pre-Bid meeting required?

Answer: No.

ATTACHMENTS

- Appendix D Plans: Maintenance of Traffic Details Sheets 1, 2, and 5 of 5
- Specification SP-13
- Pre-Bid Agenda, (3 pages)
- Pre-Bid Sign-In Sheet, (1 page)

Notes: The above items shall be considered as part of the bid submittal.

The total number of pages included with this addendum is Eleven (11).

All bidders are requested to acknowledge the receipt of the Addendum No. 1 by signing below and faxing this sheet to Nathaniel Carll, Purchasing Department, Maine Turnpike Authority at 207-871-7739. Bidders are also required to acknowledge receipt of this Addendum No. 1 on Page P-7 of the bid package.

Business Name

Print Name and Title

Signature

Date

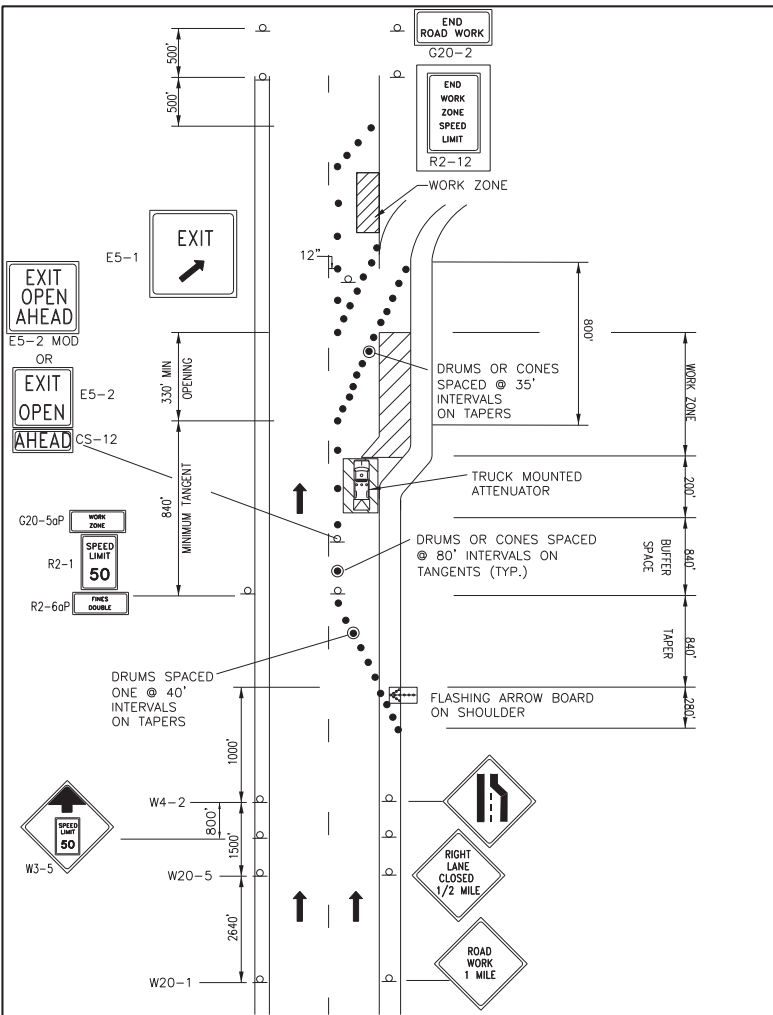
February 07, 2018

Very truly yours,

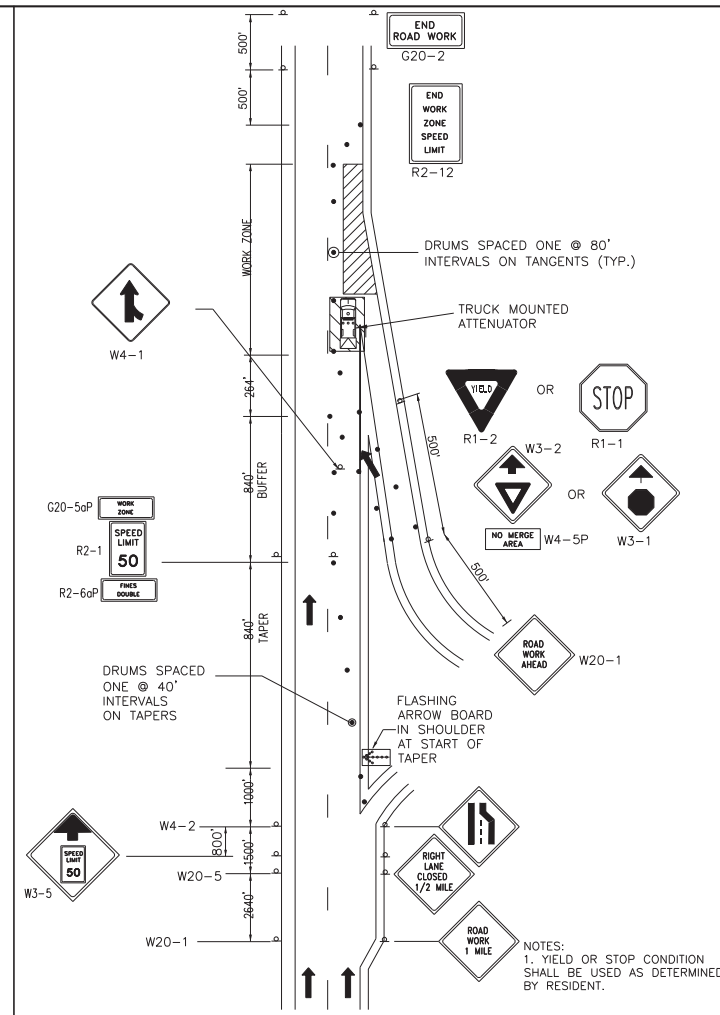
MAINE TURNPIKE AUTHORITY

Nathaniel Carll
Purchasing Department
Maine Turnpike Authority

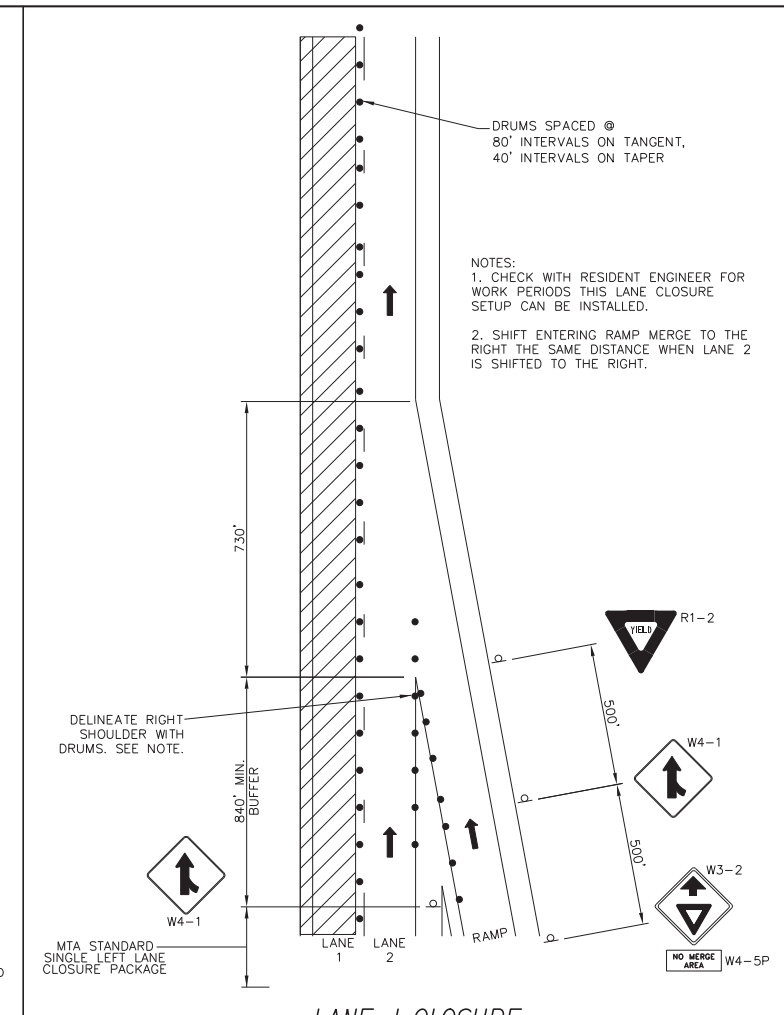
Date: 2/7/2018



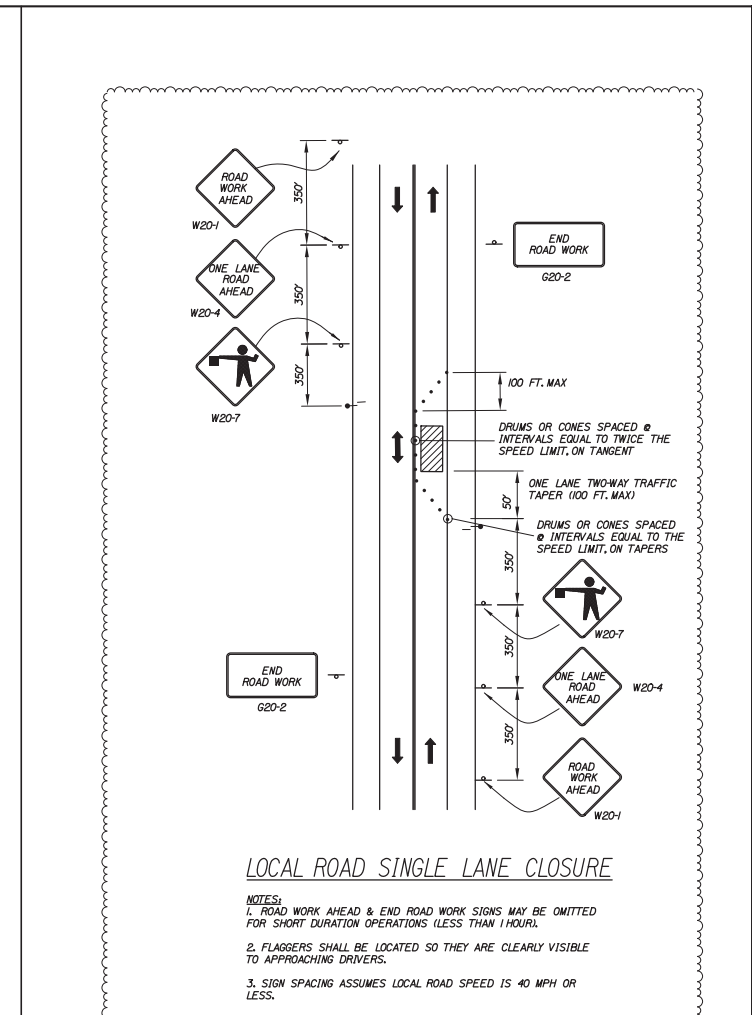
TRAVEL LANE CLOSURE AT AN EXIT RAMP



TRAVEL LANE CLOSURE AT AN ENTRANCE RAMP



LANE 1 CLOSURE WITH ENTERING RAMP OPEN



LOCAL ROAD SINGLE LANE CLOSURE

- NOTES:
1. ROAD WORK AHEAD & END ROAD WORK SIGNS MAY BE OMITTED FOR SHORT DURATION OPERATIONS (LESS THAN 1 HOUR).
 2. FLAGGERS SHALL BE LOCATED SO THEY ARE CLEARLY VISIBLE TO APPROACHING DRIVERS.
 3. SIGN SPACING ASSUMES LOCAL ROAD SPEED IS 40 MPH OR LESS.

Filename: 002_MOT_Details 2_Rev 1.dgn

Scale:			
No.	Revision	By	Date
1	Moved From MOT Sheet 1	D.A.M.	02-18

Designed by:

HNTB

CONSULTANT PROJECT MANAGER: DALE A. MITCHELL, P.E.

	By	Date	Checked	By	Date
Designed	CAH	2/16	JRD	JRD	1/17
Drawn	SLR	2/16	In Charge of	RAL	1/17

HNTB CORPORATION
 340 County Road, Suite 6-C
 Westbrook, ME 04092
 TEL (207) 774-5155
 FAX (207) 228-0909

MAINE TURNPIKE

THE GOLD STAR MEMORIAL HIGHWAY

MTA PROJECT MANAGER: KRISTI VAN OUYEN, P.E.

BRIDGE PAINTING

MAINTENANCE OF TRAFFIC DETAILS 2

SHEET NUMBER: MOT-02

CONTRACT: 2018.04

2 OF 5

Date: 2/7/2018

IDENTIFICATION NUMBER	SIZE OF SIGN		TEXT	TEXT DIMENSIONS (INCHES)			NUMBER OF SIGNS REQUIRED CIDER HILL ROAD, YORK	NUMBER OF SIGNS REQUIRED CAPT. THOMAS OGUNQUIT	NUMBER OF SIGNS REQUIRED ROUTE 126 W. GARDINER	NUMBER OF SIGNS REQUIRED HIGH STREET W. GARDINER	COLOR		BORDER RADIUS	AREA IN SQUARE FEET
	WIDTH	HEIGHT		LETTER HEIGHT	VERTICAL SPACING	ARROW RTE. MKR.					BACK-GROUND	LEGEND BORDER		
W20-5aR	48"	48"		TEXT DIMENSIONS SHALL CONFORM TO '2004 EDITION - STANDARD HIGHWAY SIGNS - 2012 SUPPLEMENT'			4	4	-	-	COLORS SHALL CONFORM TO '2004 EDITION - STANDARD HIGHWAY SIGNS - 2012 SUPPLEMENT'			16.00 (128)
W20-5aL	48"	48"					4	4	-	-				16.00 (128)
W16-4P	30"	24"					2	2	2	2				5.00 (40)
W21-5	48"	48"					2	2	2	2				16.00 (128)
W3-4	48"	48"					6	6	4	4				16.00 (320)
CS-1	48"	48"					6	4	4	4				16.00 (288)
W8-1	48"	48"					0	0	2	0				16.00 (32)
W8-24a	48"	48"		6" 6" 6"	4" 4"		0	0	2	0	ORANGE	BLACK		16.00 (32)



Filename: 005_Sign_Summary_3_Rev_1.dgn

Scale:

No.	Revision	By	Date
1	Added W8-1 and W8-24a Signs	D.A.M.	02-18

Designed by:

HNTB

CONSULTANT PROJECT MANAGER: DALE A. MITCHELL, P.E.

	By	Date	By	Date	
Designed	JRD	1/17	Checked	MHP	1/17
Drawn	JRD	1/17	In Charge of	RAL	1/17

HNTB CORPORATION
 340 County Road, Suite 6-C
 Westbrook, ME 04092
 TEL (207) 774-5155
 FAX (207) 228-0909

**THE GOLD STAR
MEMORIAL HIGHWAY**

MTA PROJECT MANAGER: KRISTI VAN OUYEN, P.E.

BRIDGE PAINTING

SIGN SUMMARY 3

SHEET NUMBER: MOT-05
5 OF 5

CONTRACT: 2018.04

SPECIAL PROVISIONSECTION 506PAINTING OF STRUCTURAL STEEL

(Lead Abatement and NEPCOAT Coating Application)

All requirements in this specification are the responsibility of the Contractor unless noted otherwise. The provisions of the MaineDOT Standard Specification - Section 506 Shop Applied Protective Coating - Steel do not apply to this Special Provision.

506.01 Description

This specification covers the field cleaning of and application of a protective coating system to the specified areas of existing structural steel on the Cider Hill Road Underpass Bridge – Mile 6.2, Captain Thomas Road Underpass Bridge – Mile 14.8, Route 126 Underpass Bridge – Mile 101.7 and High Street Underpass Bridge – Mile 103.6.

The work shall consist of furnishing all supervisory personnel, including competent person(s), labor, tools, equipment, containment, scaffolding, protection of public and private property, Quality Control activities, materials, and incidentals necessary for satisfactory completion of the Work. The specific areas to be cleaned and coated are as follows:

Cider Hill Road Underpass Bridge – Mile 6.2, York:

All steel areas, including beams, beam splices, diaphragms, diaphragm connection plates, bearing stiffeners, angle braces, bearing assemblies, downspouts, lateral bracing, and existing utility supports; excluding the galvanized finger joint downspout at the southeast corner.

Captain Thomas Road Underpass Bridge – Mile 14.8, Ogunquit:

All steel areas, including beams, beam splices, cross frame connection plates, bearing stiffeners and angle braces; excluding the galvanized downspouts, bearing assemblies, abutment diaphragms and cross frames.

Route 126 Underpass Bridge – Mile 101.7, West Gardiner:

All steel areas, including beams, beam splices, diaphragm connection plates, bearing stiffeners, angle braces, diaphragms, bearing assemblies; excluding the galvanized bolsters, downspouts and overhead mounted sign supports.

High Street Underpass Bridge – Mile 103.6, West Gardiner:

All steel areas, including beams, beam splices, diaphragm connection plates, bearing stiffeners, angle braces and diaphragms; excluding the galvanized downspouts and bearing assemblies.

506.02 General

MAINE TURNPIKE AUTHORITY

Pre-Bid Conference

CONTRACT 2018.04

CLEANING AND PAINTING STEEL STRUCTURES -
CIDER HILL ROAD UNDERPASS BRIDGE - MILE 6.2, CAPTAIN THOMAS ROAD UNDERPASS
BRIDGE - MILE 14.8, ROUTE 126 UNDERPASS BRIDGE - MILE 101.7 AND HIGH STREET
UNDERPASS BRIDGE - MILE 103.6

February 2, 2018 at 11:00am

1) Location:

Cider Hill Road Underpass Bridge - Mile 6.2, Captain Thomas Road Underpass Bridge - Mile 14.8, Route 126 Underpass Bridge - Mile 101.7 AND High Street Underpass Bridge - Mile 103.6

2) General Description:

This Project consists of cleaning and painting specified areas of structural steel and metal work, and all non-galvanized bearing assemblies, with a three coat NEPCOAT paint system for the above bridge structures along with all work incidental thereto in accordance with these Specifications.

3) Bid Questions:

- a) All bid and contractual questions shall be directed to Nate Carll, Purchasing Manager at Phone No. (207) 482-8115.
- b) All questions on plans and specifications shall be in writing and shall faxed or emailed to Nate Carll of the Maine Turnpike Authority. Fax No. (207) 871-7739, email: ncarll@maineturnpike.com.

4) Notification:

- a) Contractor shall notify and obtain approval from the Authority prior to visiting the Project site for field inspection. The contact person is Mr. Steve Tartre at (207) 871-7771, ext. 144.

5) Contract Specifications

- a) The Specifications are divided into three parts: Part I, Supplemental Specifications, Part II, Special Provisions and Part III, Appendices. Contractor to review updated Supplemental Specifications.
- b) The Maine Turnpike Supplemental Specifications are additions and alternations to the 2014 Maine Department of Transportation Standard Specifications. MTA Supplemental Specifications are available on the Maine Turnpike Authority website.

6) Hauling of Materials and Equipment – General Requirements (Supplemental Specification 105.5.1)

- a) U-Turns at toll plazas and median openings not allowed.

7) Maine Department of Labor – Fair Hourly Wages (Special Provision 104.3.8)

8) Lead Paint (Special Provision 105.2.4.2):

- a) Contractor is advised of the presence of lead paint and associated precautions thereto. Appendix A includes previous RCRA 8 testing reports.

9) Permit Requirements (Special Provision 105.8.2)

- a) The Project is subject to the requirements of the Maine Pollutant Discharge Elimination System (MPDES) General Permit for Stormwater Discharge from Construction Activity.
- b) Potential Limits of Disturbance are shown in Appendix D.
- c) Compliance with the erosion and sedimentation control requirements outlined in this Contract is required by the Contractor.
- d) The Project will be performed in accordance with the MaineDOT Best Management Practices (BMP) latest issue.

10) Limitations of Operations (Special Provision 107.4.7):

- a) Concurrent work at multiple bridge locations shall only include either a combination of Cider Hill Road (Mile 6.2) and Captain Thomas Road (Mile 14.8) or Route 126 (Mile 101.7) and High Street (Mile 103.6).

11) Traffic Control (Special Provision Section 652):

- a) Lane closures restrictions are shown in Appendix B. A combination of day work and night work is anticipated.
- b) All jobsite personnel shall wear a safety vest labeled as ANSI 107-2004 standard performance for Class 3 risk exposures. This requirement also applies to truck drivers and equipment operators when out of an enclosed cab.
- c) All vehicles used on the Project shall be equipped with amber flashing beacons in accordance with the Supplemental Specification 652.3.4. The requirements for flashing beacons has been revised and should be reviewed.
- d) Lane closures shall be removed if work requiring the lane closure is not ongoing unless included in the Contract as a long term traffic control requirement or approved by the Resident.
- e) The Contractor is responsible for supplying, inspecting and maintaining traffic control devices in accordance with the project specifications. Contractor is subject to Penalty Damages for violation(s) per Supplemental Specification 652 and Special Provision 652.
- f) All signs, which do not apply to current construction activity, shall be 100% covered or removed in accordance with the plans. This includes speed limit signs when the work zone speed is in effect.
- g) All traffic control devices shall be NCHRP 350 compliant. Contractor access to and from the mainline shall not negatively impact mainline traffic flow. The Contractor may be required to establish lane closures to provide for safe access.

Project Specific Items

Bid Opening: February 15, 2018 at 1:00 P.M. at MTA Headquarters 2360 Congress Street, Portland

12) Construction Schedule/Prosecution of Work:

- a) February 22, 2018 – MTA Board to consider Contract Award
- b) October 12, 2018 – Substantial Completion Date
- c) October 26, 2018 – Contract Completion Date

13) Cooperation With Other Contractors (Special Provision 104.4.7):

Adjacent contracts currently active or scheduled for the 2017 construction season include:

- a) MTA Contract 2017.09 – York Toll Plaza Replacement
- b) MTA Contract 2017.10 – Clearing: MM 42-47.7, 92.8-100.8 and 85-85.6
- c) MTA Contract 2018.01 – Mainline pavement rehabilitation: MM 98-102.8
- d) MTA Contract 2018.05 – I-295 SB Underpass bridge rehabilitation
- e) MTA Contract 2018.08 – Dennett Road Bridge Repair and York River Bridge wearing surface repair
- f) MTA Contract 2018.15 – Cobbosseecontee Bridge Deck rehabilitation

14) Substantial Completion (Special Provision 107.1.1)

- a) October 12, 2018.
 - i) Supplemental Liquidated Damages will be assessed per the table in the Supplemental Specification 107.7.2 for every day substantial completion is not meet.

15) Specific Contract Items

- a) General
 - i) Non-revenue toll passes will be issued for this contract.
- b) Section 652 – Maintenance of Traffic
 - i) Temporary Concrete Barrier – Required when working in a long-term right shoulder closure.
 - ii) Truck Mounted Attenuator – Utilized in lane closures or other construction operations where workers are exposed to traffic and not protected by positive means and when workers are working higher than eight feet above grade. See Supplemental Specifications for details.
 - iii) Lane closures restrictions are shown in Appendix B. A combination of day work and night work is anticipated.
 - iv) Temporary Portable Rumble Strip – A revised Maintenance of Traffic Detail plan will be issued under Addendum to clarify location of installation.
 - v) Automated Trailer Mounted Speed Limit Sign – To be provided and operated per plans and specifications. An updated Maintenance of Traffic Details plan will be issued under Addendum showing the location of setup.
 - vi) Temporary Portable Rumble Strips and Automated Trailer Mounted Speed Limit Signs are tools available to the contractor and are optional; payment will be made for their use as described in the plans and specifications. Truck Mounted Attenuators are optional except for when workers are higher than eight feet above grade.
- c) Waste Management (Special Provision 506.11):
 - i) Bridge specific hazardous waste storage areas are identified.
 - ii) Mixing of hazardous waste from separate site locations will not be permitted.

16) Questions

