

MAINE TURNPIKE AUTHORITY

ADDENDUM NO. 2

CONTRACT 2017.04

BRIDGE REPAIR
HIGH STREET UNDERPASS BRIDGE (MM 103.60)

SUPERSTRUCTURE REPLACEMENT
WINTHROP ROAD UNDERPASS BRIDGE (MM 108.30)

Make the following changes to the bid documents:

REVISE the bid opening time and date to 11:00 a.m., prevailing time as determined by the Authority on February 17, 2017.

In the Contract Plans, on Sheet 1 at the bottom of the Index of Sheets table, **ADD** the following:

“84A Winthrop Road Access Road (1 of 2)
84B Winthrop Road Access Road (2 of 2)”
Make this change in pen and ink.

In the Contract Plans, on Sheet 9 in Note 1, cross out the first sentence and **REPLACE** with the following, “The traffic control plan for this project is to close the bridge to all traffic for a maximum of 21 days.” Make this change in pen and ink.

ADD the attached sheets 84A and 84B for the Winthrop Road access road.

In the Contract Documents, Proposal, **REMOVE** pages P-2 through P-9 and **REPLACE** with the attached revised pages P-2 through P-9. Note that the revised proposal sheets include bid quantities for the proposed Winthrop Road access road.

In the Contract Documents, Part 2 - Special Provisions, **REMOVE** page SP-11 and **REPLACE** with the attached revised SP-11.

In the Contract Documents, Part 2 - Special Provisions, **REMOVE** Section 403 HOT MIX ASPHALT PAVEMENT and **REPLACE** with the attached revised Section 403 HOT MIX ASPHALT PAVEMENT.

ADD the attached Special Provision Section 419 SAWING AND SEALING JOINTS IN BITUMINOUS PAVEMENT.

ADD the attached Special Provision Section 606 GUARDRAIL (Guardrail 350 FLEAT Terminal).

ADD the attached Special Provision Section 607 FENCES (Remove and Reset Pipe Entry Gate).

In the Contract Documents, Part 2 - Special Provisions, **REMOVE** Section 652 MAINTENANCE OF TRAFFIC (Specific Project Maintenance of Traffic Requirements) and **REPLACE** with the

attached revised Section 652 MAINTENANCE OF TRAFFIC (Specific Project Maintenance of Traffic Requirements).

Attachments

- Contract Plans Sheets 84A-84B (2 pages)
- Proposal Sheets P-2 through P-9 (8 pages)
- Special Provision Page SP-11 (1 page)
- Special Provision 403 Hot Mix Asphalt Pavement (2 pages)
- Special Provision 419 Sawing and Sealing Joints in Bituminous Pavement (1 page)
- Special Provision 606 Guardrail (Guardrail 350 FLEAT Terminal) (2 pages)
- Special Provision 607 Fences (1 page)
- Special Provision 652 Maintenance of Traffic (Specific Project Maintenance of Traffic Requirements) (6 pages)

Note: The above items shall be considered as part of the bid submittal.

The total number of pages included with this addendum is twenty-five (25).

All bidders are requested to acknowledge the receipt of the Addendum No. 2 by signing below and faxing this sheet to Nate Carll, Purchasing Department, (207) 871-7739. Bidders are also required to acknowledge receipt of this Addendum No. 2 on Page P-10 of the bid package.

Business Name

Print Name and Title

Signature

Date

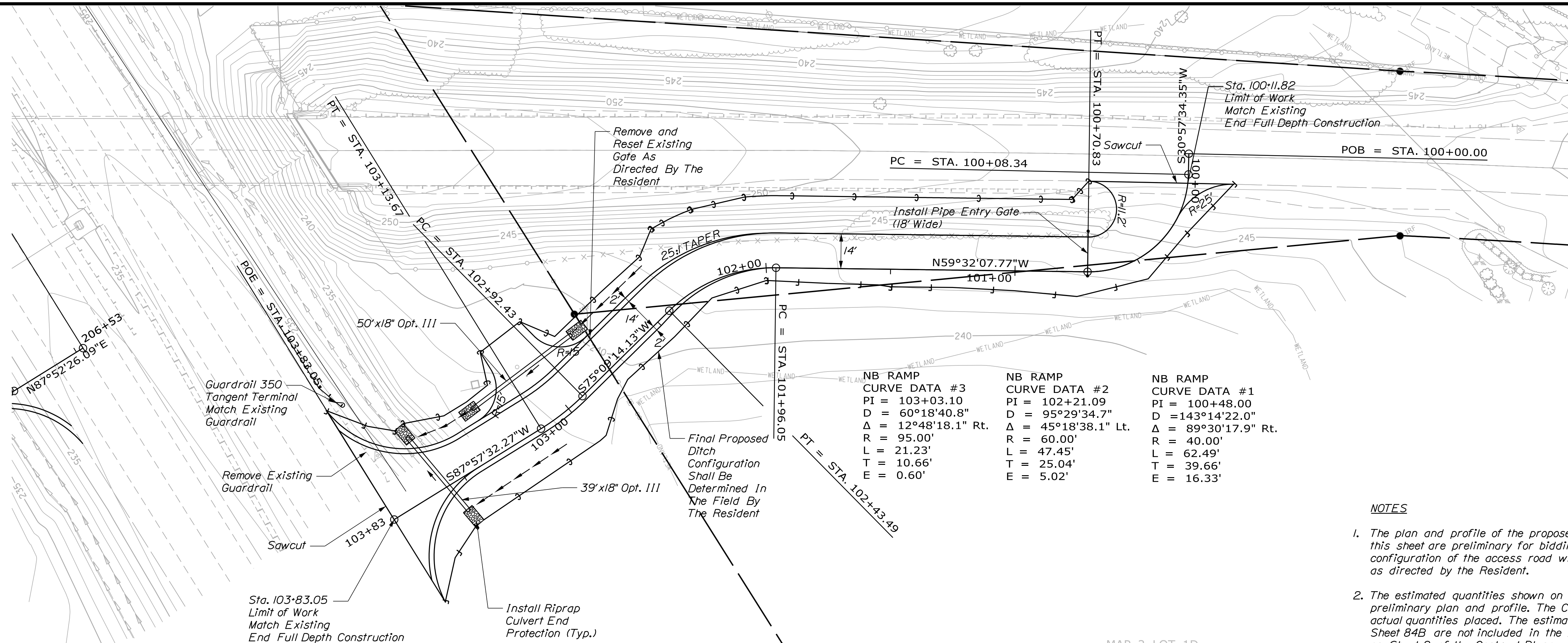
February 14, 2017

Very truly yours,

MAINE TURNPIKE AUTHORITY

Purchasing Manager
Maine Turnpike Authority

Date: 2/14/2017



PLAN

NB RAMP CURVE DATA #3

PI = 103+03.10
 D = 60°18'40.8"
 Δ = 12°48'18.1" Rt.
 R = 95.00'
 L = 21.23'
 T = 10.66'
 E = 0.60'

NB RAMP CURVE DATA #2

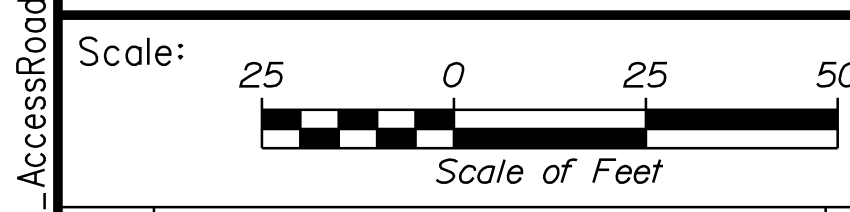
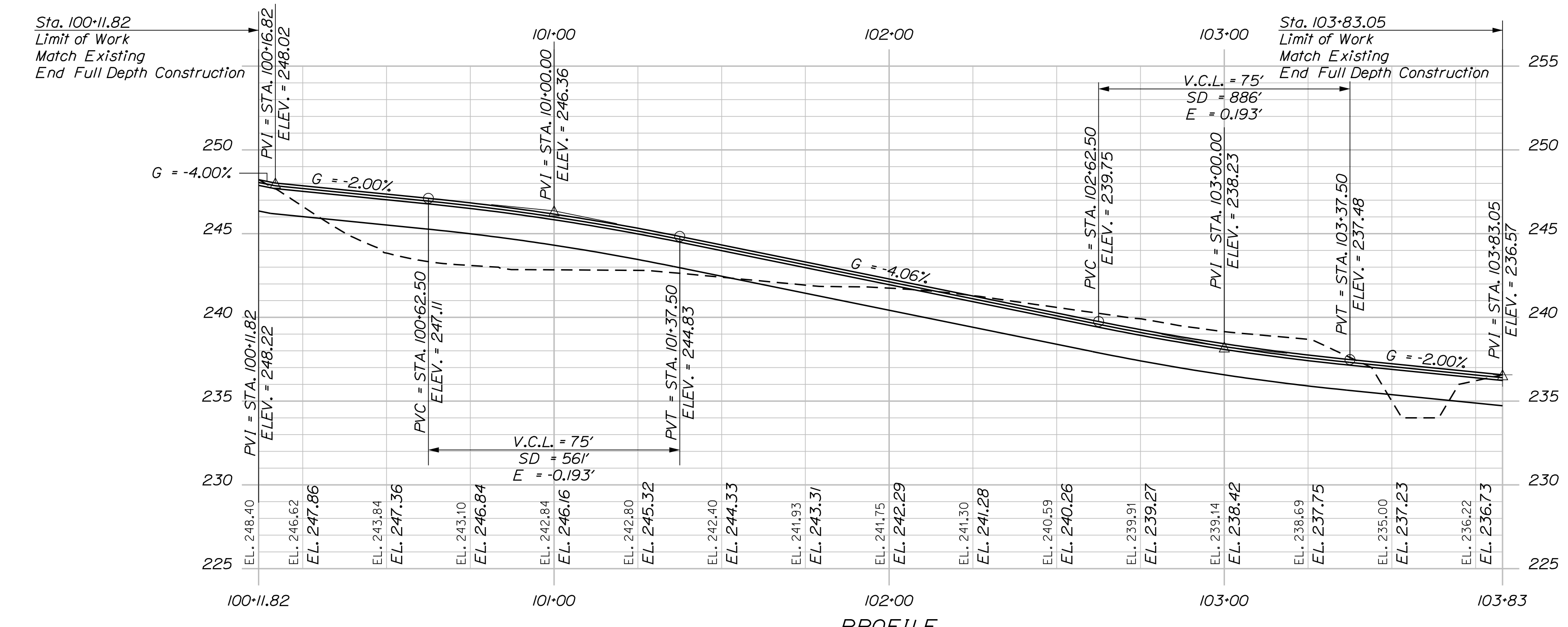
PI = 102+21.09
 D = 95°29'34.7"
 Δ = 45°18'38.1" Lt.
 R = 60.00'
 L = 47.45'
 T = 25.04'
 E = 5.02'

NB RAMP CURVE DATA #1

PI = 100+48.00
 D = 143°14'22.0"
 Δ = 89°30'17.9" Rt.
 R = 40.00'
 L = 62.49'
 T = 39.66'
 E = 16.33'

NOTES

1. The plan and profile of the proposed access road shown on this sheet are preliminary for bidding purposes. The final configuration of the access road will be determined in the field as directed by the Resident.
2. The estimated quantities shown on Sheet 84B are based on the preliminary plan and profile. The Contractor will be paid for the actual quantities placed. The estimated quantities shown on Sheet 84B are not included in the Estimated Quantities Table on Sheet 2 of the Contract Plans.
3. When stripping loam and sod off the existing access road, the contractor shall dig test pits to determine if the top 18" of the existing subbase is clean and free draining material. If so the contractor may pave directly over the existing subbase as directed by the resident.



Designed by:

CONSULTANT PROJECT MANAGER: T. Bryant

No.	Revision	By	Date

	By	Date		By	Date
Designed		1/2017	Checked		1/2017
Drawn	DPD	1/2017	In Charge of	TSB	1/2017

VANASSE HANGEN BRUSTLIN, INC.
 500 Southborough Dr.
 Suite 105B
 South Portland, ME 04106
 TEL (207) 889-3150
 FAX (207) 253-5596

THE GOLD STAR MEMORIAL HIGHWAY

MTA PROJECT MANAGER: Ralph Norwood, IV

SUPERSTRUCTURE REPLACEMENT
WINTHROP ROAD UNDERPASS

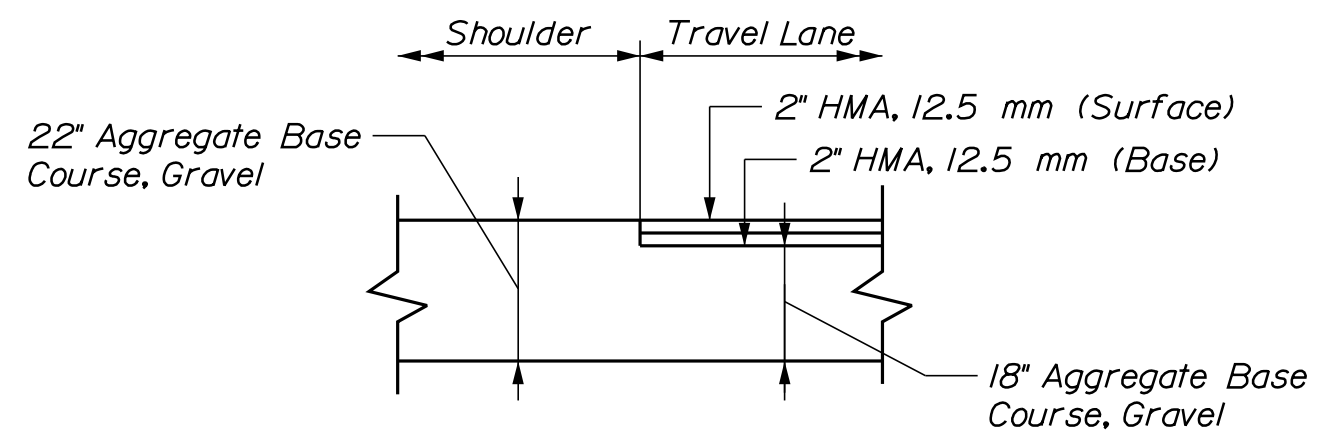
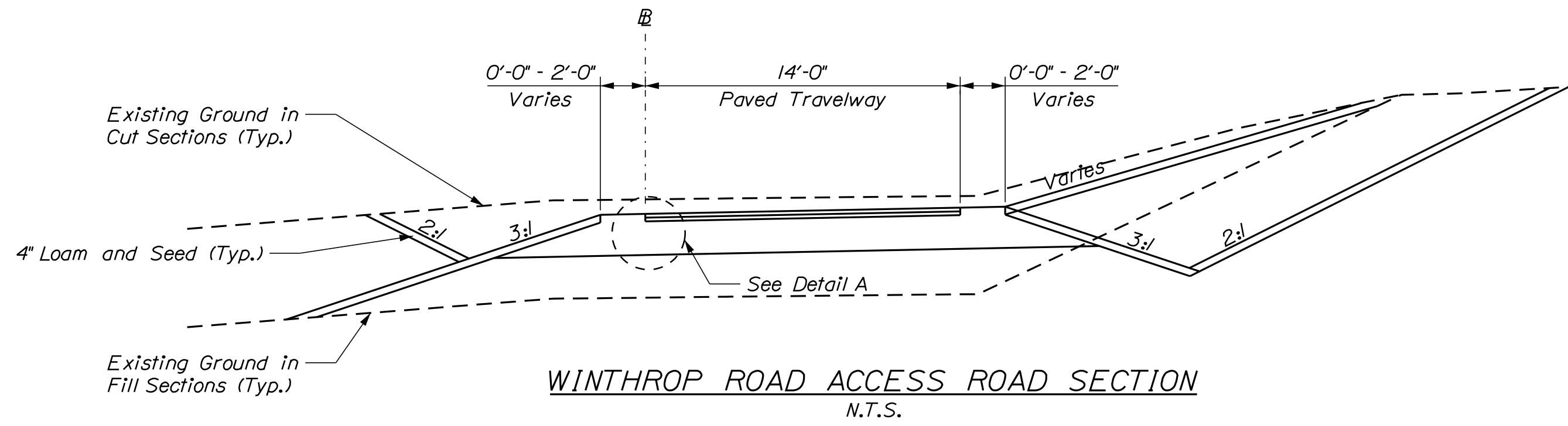
WINTHROP ROAD ACCESS ROAD (1 OF 2)

VHB: 55106.00 SHEET NUMBER: 84A
 CONTRACT: 2017.04

84A OF 84

Filename: ...AccessRoad_01.dgn

Date: 2/14/2017

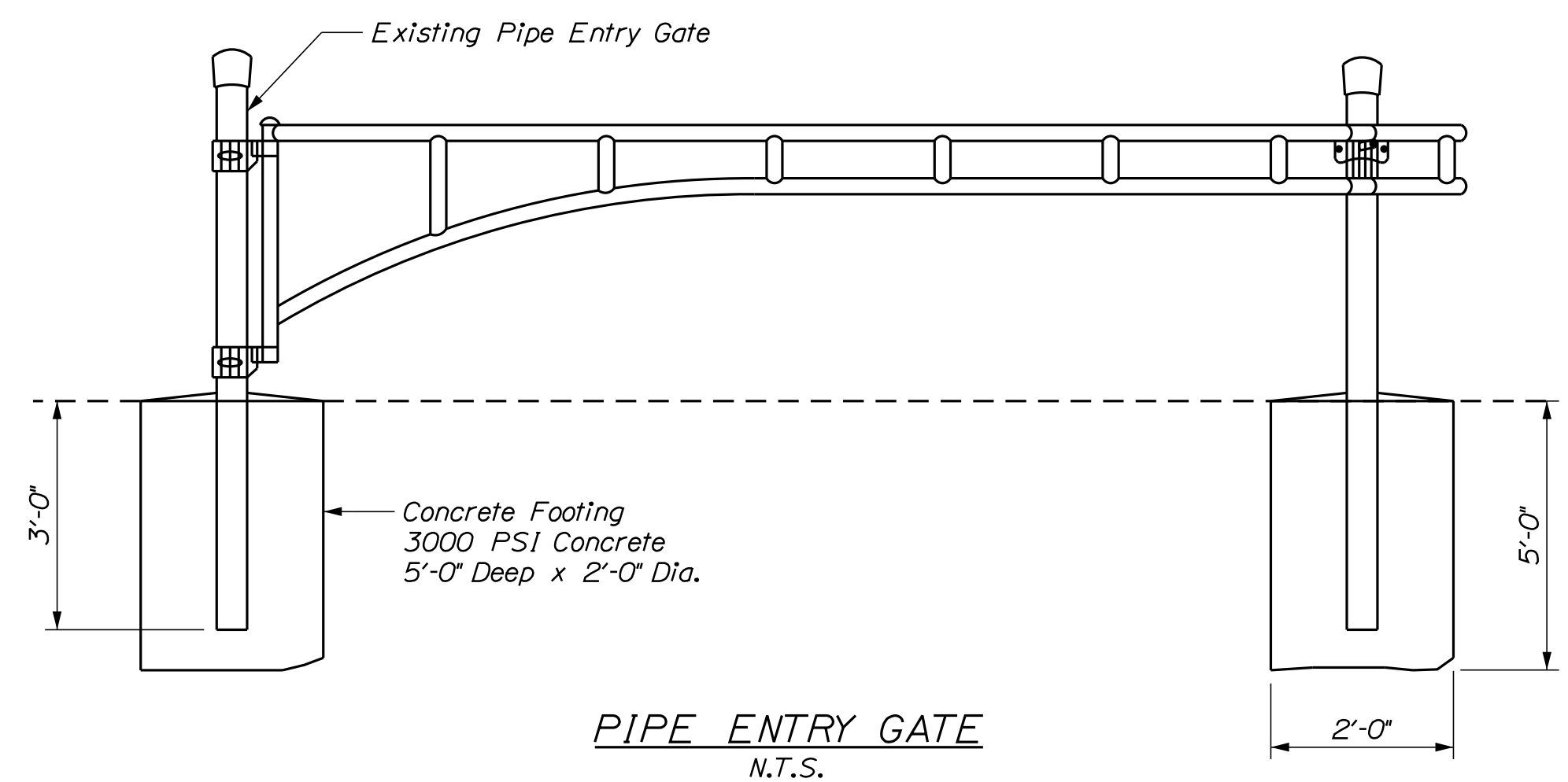


TYPICAL ROADWAY SECTION NOTES

1. The pavement, base, and subbase depths as shown on plans are intended to be nominal.
2. All necessary pavement cutting shall be sawcut and done in such a manner as to leave a clean vertical face.
3. Bituminous tack coat is required between all lifts of pavement, or as directed by the resident

ESTIMATED QUANTITIES

ITEM NO.	DESCRIPTION	QUANTITY	UNIT
203.20	COMMON EXCAVATION	375	CY
304.10	AGGREGATE SUBBASE COURSE - GRAVEL	525	CY
403.208	HOT MIX ASPHALT, 12.5 MM SURFACE	75	T
403.213	HOT MIX ASPHALT, 12.5 MM BASE	75	T
409.15	BITUMINOUS TACK COAT, APPLIED	20	G
419.30	SAWING BITUMINOUS PAVEMENT	150	LF
603.179	18" CULV PIPE OPTION III	90	LF
606.356	UNDERDRAIN DELINEATOR POST	4	EA
606.80	GUARDRAIL FLEAT 350 TERMINAL	1	EA
607.2326	REMOVE AND RESET PIPE ENTRY GATE	1	EA
610.08	PLAIN RIPRAP	8	CY
615.07	LOAM	120	CY
618.1401	SEEDING METHOD NUMBER 2 - PLAN QUANTITY	8	UN
618.1411	SEEDING METHOD NUMBER 3 - PLAN QUANTITY	2	UN
619.1201	MULCH - PLAN QUANTITY	10	UN




Filename: ...AccessRoad_02.dgn

Scale:

No.	Revision	By	Date

Designed by:



CONSULTANT PROJECT MANAGER: T. Bryant

	By	Date	Checked	By	Date
Designed		1/2017			1/2017
Drawn	DPD	1/2017	In Charge of	TSB	1/2017

VANASSE HANGEN BRUSTLIN, INC.
 500 Southborough Dr.
 Suite 105B
 South Portland, ME 04106
 TEL (207) 889-3150
 FAX (207) 253-5596



**THE GOLD STAR
MEMORIAL HIGHWAY**

MTA PROJECT MANAGER: Ralph Norwood, IV

**SUPERSTRUCTURE REPLACEMENT
WINTHROP ROAD UNDERPASS**

WINTHROP ROAD ACCESS ROAD (2 OF 2)

VHB: 55106.00 SHEET NUMBER: 84B
 CONTRACT: 2017.04

84B OF 84

**SCHEDULE OF BID PRICES
CONTRACT NO. 2017.04**

**BRIDGE REPAIRS - HIGH STREET UNDERPASS - MM 103.60
SUPERSTRUCTURE REPLACEMENT - WINTHROP ROAD UNDERPASS - MM 108.30**

Item No	Item Description	Units	Approx. Quantities	Unit Prices in Numbers		Bid Amount in Numbers	
				Dollars	Cents	Dollars	Cents
202.10	Removing Existing Superstructure - Property of Contractor	Lump Sum	1				
202.17	Removing Existing Structural Concrete	Lump Sum	1				
202.202	Removing Pavement Surface	Square Yard	1100				
203.20	Common Excavation	Cubic Yard	1233				
203.25	Granular Borrow	Cubic Yard	105				
304.10	Aggregate Subbase Course - Gravel	Cubic Yard	1295				
402.208	Hot Mix Asphalt, 12.5 mm Nominal Max. Size	Ton	200				
403.209	Hot Mix Asphalt, 9.5 mm Nominal Max. Size (Sidewalks, Drives, Islands and Incidentals)	Ton	10				
403.21	Hot Mix Asphalt, 9.5 mm Nominal Maximum Size	Ton	340				
403.213	Hot Mix Asphalt, 12.5 mm Nominal Maximum Size (Base and Intermediate Course)	Ton	415				
409.15	Bituminous Tack Coat - Applied	Gallon	240				

CARRIED FORWARD:

Item No	Item Description	Units	Approx. Quantities	Unit Prices in Numbers		Bid Amount in Numbers	
				Dollars	Cents	Dollars	Cents
BROUGHT FORWARD:							
419.30	Sawing Bituminous Pavement	Linear Foot	150				
502.21	Structural Concrete, Abutments and Retaining Walls	Cubic Yard	42				
502.23	Structural Concrete Piers	Cubic Yard	28				
502.25	Structural Concrete Superstructure Slab	Lump Sum	1				
502.58	Ultra High Performance Structural Concrete	Lump Sum	1				
502.701	Bridge Drain Grate Modification	Each	4				
503.12	Reinforcing Steel, Fabricated and Delivered	Pounds	1721				
503.13	Reinforcing Steel, Placing	Pounds	1721				
503.14	Epoxy-Coated Reinforcing Steel, Fabricated and Delivered	Pounds	13748				
503.15	Epoxy-Coated Reinforcing Steel, Placing	Pounds	13748				
504.702	Structural Steel Fabricated and Delivered, Welded	Lump Sum	1				
504.71	Structural Steel Erection	Lump Sum	1				

CARRIED FORWARD:

Item No	Item Description	Units	Approx. Quantities	Unit Prices in Numbers		Bid Amount in Numbers	
				Dollars	Cents	Dollars	Cents
BROUGHT FORWARD:							
505.08	Shear Connectors	Lump Sum	1				
506.9102	Zinc-Rich Coating System (Shop Applied)	Lump Sum	1				
507.0821	Steel Bridge Railing, 3 Bar	Lump Sum	1				
508.14	High Performance Waterproofing Membrane	Lump Sum	1				
508.15	Membrane Waterproofing	Lump Sum	1				
514.06	Curing Box for Concrete Cylinders	Each	1				
515.201	Pigmented Protective Coating for Concrete Surfaces	Square Yard	1315				
515.202	Clear Protective Coating for Concrete Surfaces	Square Yard	425				
518.10	Abutment Repairs	Square Foot	54				
518.20	Pier Repairs	Square Foot	302				
518.4	Epoxy Injection Crack Repair	Linear Foot	6				
518.80	Partial Depth Concrete Deck Repair	Square Foot	600				

CARRIED FORWARD:

Item No	Item Description	Units	Approx. Quantities	Unit Prices in Numbers		Bid Amount in Numbers	
				Dollars	Cents	Dollars	Cents
BROUGHT FORWARD:							
520.2211	Expansion Joint Modification	Each	2				
520.23	Asphaltic Plug Joint	Linear Foot	66				
520.234	Expansion Device - Silicone Coated and Pre-compressed Seal	Linear Foot	96				
523.52	Bearing Installation	Each	25				
523.5402	Laminated Elastomeric Bearings, Expansion	Each	10				
523.5404	PTFE Elastomeric Bearings, Expansion	Each	15				
524.40	Protective Shielding - Steel Girders	Square Yard	960				
526.306	Temporary Concrete Barrier, Type I - Supplied by Authority	Lump Sum	1				
527.341	Work Zone Crash Cushions -TL-3	Unit	4				
534.7601	Precast Approach Slab	Lump Sum	1				
535.302	Full Depth Precast Concrete Deck Panels	Lump Sum	1				
603.179	18 inch Culvert Pipe Option III - HDPE Only	Linear Foot	90				

CARRIED FORWARD:

Item No	Item Description	Units	Approx. Quantities	Unit Prices in Numbers		Bid Amount in Numbers	
				Dollars	Cents	Dollars	Cents
BROUGHT FORWARD:							
606.1728	W-Beam to 3-Bar Bridge Rail Transition	Each	4				
606.244	Guardrail Type 3d - Single Rail, 7 Foot Posts	Linear Foot	937.5				
606.241	Guardrail Type 3d - 15' Radius and Less	Linear Foot	12.5				
606.242	Guardrail Type 3d - Over 15' Radius	Linear Foot	12.5				
606.259	Anchorage Assembly	Each	1				
606.265	Terminal End - Single Rail - Galvanized Steel	Each	1				
606.353	Reflectorized Flexible Guardrail Marker	Each	3				
606.356	Underdrain Delineator Post	Each	4				
606.80	Guardrail FLEAT 350 Terminal	Each	1				
606.81	Tangent Guardrail Terminal - Energy Absorbing	Each	1				
607.17	Chain Link Fence - 6 Foot	Linear Foot	375				
607.23	Chain Link Fence Gate	Each	2				

CARRIED FORWARD:

Item No	Item Description	Units	Approx. Quantities	Unit Prices in Numbers		Bid Amount in Numbers	
				Dollars	Cents	Dollars	Cents
BROUGHT FORWARD:							
607.2326	Remove and Reset Pipe Entry Gate	Each	1				
607.32	Bracing Assembly Type I - Metal Posts	Each	12				
607.33	Bracing Assembly Type II - Metal Posts	Each	8				
607.431	Snow Fence	Linear Foot	224				
609.11	Vertical Curb Type I	Linear Foot	148				
610.08	Plain Riprap	Cubic Yard	248				
610.18	Stone Ditch Protection	Cubic Yard	47				
613.319	Erosion Control Blanket	Square Yard	1100				
615.07	Loam	Cubic Yard	275				
618.14	Seeding Method Number 2	Unit	9.5				
618.141	Seeding Method Number 3	Unit	13				
619.1201	Mulch - Plan Quantity	Unit	22.5				

CARRIED FORWARD:

Item No	Item Description	Units	Approx. Quantities	Unit Prices in Numbers		Bid Amount in Numbers	
				Dollars	Cents	Dollars	Cents
BROUGHT FORWARD:							
619.1202	Temporary Mulch	Lump Sum	1				
620.58	Erosion Control Geotextile	Square Yard	340				
627.712	4 inch White or Yellow Pavement Marking Line	Linear Foot	1000				
629.05	Hand Labor, Straight Time	Hour	90				
631.12	All Purpose Excavator (Including Operator)	Hour	30				
631.171	Truck - Small (Including Operator)	Hour	30				
631.36	Foreman	Hour	30				
639.18	Field Office, Type A	Each	1				
645.272	Regulatory, Warning and Bridge Number Signs, Type 1 - Supplied by Authority	Each	2				
652.30	Flashing Arrow	Each	4				
652.31	Type III Barricades	Each	18				
652.33	Drum	Each	180				

CARRIED FORWARD:

Item No	Item Description	Units	Approx. Quantities	Unit Prices in Numbers		Bid Amount in Numbers	
				Dollars	Cents	Dollars	Cents
BROUGHT FORWARD:							
652.34	Cone	Each	100				
652.35	Construction Signs	Square Foot	3257				
652.361	Maintenance of Traffic Control Devices	Lump Sum	1				
652.38	Flagger	Hour	100				
652.41	Portable Changeable Message Sign	Each	4				
652.45	Truck Mounted Attenuator	Cal. Day	140				
				200	00	28000	00
656.50	Baled Hay, in place	Each	15				
656.632	30 inch Temporary Silt Fence	Linear Foot	2050				
659.10	Mobilization	Lump Sum	1				
TOTAL:							

- All disturbed slopes loamed, seeded and mulched, temporary erosion control mix and/or blanket installed where necessary.

Supplemental Liquidated damages on a calendar day basis in accordance with Subsection 107.8 shall be assessed for each calendar day that substantial completion is not achieved.

107.4.6 Prosecution of Work

The following activities shall not begin until the date specified at the High Street Underpass:

- High Street shall not be closed until on or after June 20, 2017 or the end of the 2016-2017 school year, whichever is later.
- The Contractor shall be allowed to close the High Street Underpass Bridge a maximum of twenty-one (21) calendar days.

The following activities shall not begin until the date specified at the Winthrop Road Underpass:

- Winthrop Road shall not be closed until on or after September 5, 2017.
- The Contractor shall be allowed to close the Winthrop Road Underpass Bridge a maximum of fifty-five (55) calendar days.

The Contractor shall submit to the Authority a construction schedule which shall document that the Contractor has the necessary labor and equipment to work immediately and continuously at the project site once the bridge is closed. The intent of this specification is to minimize the amount of time for bridge closure, while providing the Contractor sufficient time to complete the work in a diligent manner and reopen the bridge to traffic by the project's prescribed Substantial Completion date.

107.4.6.1 Incentive/Disincentive for Early or Late Opening

Early Opening Incentives. The Contractor will be paid a \$5,000 incentive for each complete Calendar Day that Winthrop Road is substantially complete and reopened to two lanes of traffic prior to the 55 Calendar Day bridge closure deadline.

Late Opening Disincentive. The Contractor will be assessed a \$5,000 disincentive for each Calendar Day, or portion of a Calendar Day, that Winthrop Road is not reopened to two lanes of traffic after the 55 Calendar Day bridge closure deadline.

Maximum Total Contract Incentives/Disincentives. The maximum combined monetary incentive is capped at \$75,000 for the Winthrop Road Underpass. The maximum combined disincentive is capped at \$75,000 for the Winthrop Road Underpass. These are in addition to contract liquidated damages.

SPECIAL PROVISIONSECTION 403HOT MIX ASPHALT PAVEMENT

Course	HMA Grading	Item Number	Total Thickness	No. of Layers	Complimentary Notes
--------	-------------	-------------	-----------------	---------------	---------------------

High Street Bridge

Wearing	12.5 mm	403.208	2.5"	1	B,E,J,L,N
---------	---------	---------	------	---	-----------

Winthrop Road Bridge

Wearing	9.5 mm	403.210	1.5"	1	B,E,J,L,N
Base	9.5 mm	403.210	1.5"	1	B,E,J,L,N

Winthrop Road Approaches

Intermediate	9.5 mm	403.210	1.5"	1	B,C,E,J,L,N
Base	12.5mm	403.213	2.5"	1	B,C,E,J,L,N

Winthrop Road Access Road

Wearing	12.5 mm	403.208	2"	1	B,E,J,L,N
Base	12.5mm	403.213	2"	1	B,E,J,L,N

COMPLEMENTARY NOTES

- A. The required PGAB for this mixture shall be **64E-28**.
- B. The required PGAB for this mixture shall be **64-28**.
- C. A maximum of 15 percent RAP may be used.
- D. RAP may not be used.
- E. The Maine DOT will conduct the job mix verification. The aggregate qualities shall meet the design traffic level of 3 to <10 million ESALS for mix placed under this contract. The design verification, Quality Control, and Acceptance tests for this mix will be performed at **75 gyrations**. (N design) Minimum and Maximum PGAB content shall not apply.
- F. The MTA will conduct the job mix verification. The aggregate qualities shall meet the design traffic level of 10 to <30 million ESALS for mix placed under this contract. The design verification, Quality Control, and Acceptance tests for this mix will be performed at **75 gyrations**. (N design)
- G. A material transfer vehicle (MTV) shall be used for the placement of Hot Mix Asphalt wearing surface on all roadways including acceleration and deceleration lanes and all ramps.
- H. Joints shall be constructed as the "notched wedge" type in accordance with Subsection 401.17.
- I. Joint density will be measured in accordance with Subsection 401.165.
- J. Tack coat shall be applied between all layers of pavement at a rate of 0.04 G/SY.

- K. PGAB shall conform to the provisions of 403.02 – Polymer Modified PGAB for HMA
- L. The contractor shall furnish a quality control technician equipped with an approved densometer to ensure density requirements are met.
- M. Hydrated Lime shall be incorporated into the mixture.
- N. No vehicular loads shall be permitted on newly completed pavement until adequate stability has been attained and the material has cooled sufficiently to prevent distortion or loss of fines. The newly paved area may be opened to traffic after the internal temperature of the pavement has cooled to 120° F. The Resident will test the internal temperature of the pavement and shall be the sole judge as to the opening to traffic. The period of time before opening to traffic may be extended at the discretion of the Resident. The lane closure may not be removed until the internal temperature has cooled to 120° F.

SPECIAL PROVISION

SECTION 419

SAWING AND SEALING JOINTS IN BITUMINOUS PAVEMENT

(Sawing Bituminous Pavement)

419.01 Description

This work consists of sawing bituminous concrete pavement as shown on the Plans, as specified herein or as approved by the Resident.

419.02 General

The bituminous concrete pavement to be sawed shall be accurately marked before cutting. The marking shall be in accordance with the locations as shown on the Plans or as approved by the Resident. Cutting shall be with an approved power driven saw with an abrasive blade.

Unless otherwise noted or directed, the sawcut shall be vertical, a minimum of 3/8 inch wide, and extend to the depth as shown on the Plans.

Residue or debris from the sawing operation shall be removed immediately and legally disposed of by the Contractor.

419.03 Method of Measurement

Sawing Bituminous Pavement will be measured by the linear foot of pavement actually cut and accepted. No additional payment will be made for variations in the pavement thickness.

419.04 Basis of Payment

Sawing Bituminous Pavement will be paid for at the Contract unit price per linear foot which shall be full compensation for all materials, tools, equipment labor, and all incidentals necessary for the completion of the work to the satisfaction of the Resident. The disposal of sawcut residue shall be incidental to this item.

Payment will be made under:

<u>Pay Item</u>	<u>Pay Unit</u>
419.30 Sawing Bituminous Pavement	Linear Foot

SPECIAL PROVISION

SECTION 606

GUARDRAIL

(Guardrail 350 FLEAT Terminal)

606.01 Description

The following sentences are added:

This work shall also consist of furnishing and installing a Guardrail 350 FLEAT (Flared Energy Absorbing Terminal) as manufactured by Road Systems, Inc., 1507 East 4th Street, Big Spring, Texas 79720, (915) 263-2435, and retroreflective adhesive sheeting in accordance with these Specifications and in reasonably close conformity with the lines and grades as shown on the Plans or as approved by the Resident.

This work shall also consist of removing, storing during construction and resetting existing FLEATs.

606.02 Materials

The following sentence is added:

The retroreflective sheeting shall meet the requirements of Subsection 719.01, Reflective Sheeting – Minimum ASTM, Type VII.

The following Subsections are added:

606.03 Posts

Wood offset blocks shall be toe-nailed to the wood post to prevent the blocks from moving.

606.041 Reflective Sheeting

The color for the reflective sheeting shall be silver (white) when installed on the outside shoulder.

606.08 Method of Measurement

The second paragraph is amended by the addition of: “Guardrail 350 FLEAT Terminal” after the words “breakaway cable terminal”.

Guardrail 350 FLEAT Terminal – Remove and Reset will be measured by each unit satisfactorily reset complete in place and accepted.

606.09 Basis of Payment

The second paragraph is amended by the addition of: “and Guardrail 350 FLEAT Terminal” after the words “breakaway cable terminal”.

Guardrail 350 FLEAT Terminal – Remove and Reset will be paid for at the Contract unit price, complete in place and accepted. Payment shall be full compensation for all labor, equipment, materials and incidentals necessary to remove, store during construction and reset in accordance with the Plans and Specifications.

The retroreflective sheeting will not be measured separately for payment, but shall be incidental to the Guardrail 350 FLEAT Terminal item.

Payment will be made under:

<u>Pay Item</u>	<u>Pay Unit</u>
606.80 Guardrail 350 FLEAT Terminal	Each

SPECIAL PROVISION

SECTION 607

FENCES

(Remove and Reset Pipe Entry Gate)

607.01 Description

The following paragraphs are added:

This work shall also include removing existing pipe entry gate and resetting pipe entry gate in reasonably close conformity with the lines and grades as shown on the Plan or as approved by the Resident.

607.06 Method of Measurement

The following paragraph is added:

Remove and Reset Pipe Entry Gate will be measured by each unit of the kind specified and installed.

607.07 Basis of Payment

The following paragraph is added:

Remove and Reset Pipe Entry Gate will be paid for at the Contract price each, complete in place, which payment shall be compensation for complete disassembly, moving, stacking, furnishing and installing all necessary hardware, including broken, missing, or damaged components, excavation and concrete.

Payment will be made under:

<u>Pay Item</u>		<u>Pay Unit</u>
607.2326	Remove and Reset Pipe Entry Gate	Each

SPECIAL PROVISIONSECTION 652MAINTENANCE OF TRAFFIC

(Specific Project Maintenance of Traffic Requirements)

This Specification describes the specific project maintenance of traffic requirements for this Project.

The following minimum traffic requirements shall be maintained. These requirements may be adjusted based on the traffic volume when authorized by the Authority.

Winthrop Road Bridge Traffic Control Requirements

The Winthrop Road bridge over the Maine Turnpike will be closed to through traffic in the immediate vicinity of the bridge for not more than 55 consecutive days, proposed to be from September 5, 2017 to October 30, 2017. The Contractor shall coordinate directly with the Authority to confirm these road closure dates. The Contractor shall notify the Resident/Authority two weeks prior to the proposed bridge closure. A temporary detour shall be established and maintained at all times during the closure period in accordance with the detour plan shown in the Plans. The Winthrop Road bridge detour route begins at the Winthrop Road bridge over the Maine Turnpike, proceeding west to Whitten Road; following Whitten Road north to Western Avenue (US Route 302); following Western Avenue east to Armory Street; following Armory Street south as it turns into Capitol Street; following Capitol Street east to State Street; following State Street south to Winthrop Road at the east side of the Turnpike. The Resident/Inspector shall notify the Maine Department of Transportation (MaineDOT) Region 2 office and the Town of Hallowell prior to closing the Winthrop Road bridge.

High Street Bridge Traffic Control Requirements

The High Street bridge over the Maine Turnpike will be closed to through traffic in the immediate vicinity of the bridge for not more than 21 consecutive days. The Contractor shall coordinate directly with the Authority for acceptable road closure dates. The Contractor shall notify the Resident/Authority two weeks prior to the proposed bridge closure. A temporary detour shall be established and maintained at all times in accordance with the detour plan shown in the Plans. The High Street bridge detour route begins at the High Street bridge over the Maine Turnpike, proceeding west to Spears Corner Road; following Spears Corner Road south to Lewiston Road; following Lewiston Road east across the Turnpike to Cobbossee Avenue; following Cobbossee Avenue northeast to West Hill Road; following West Hill Road to Highland Avenue; and following Highland Avenue west to High Street at the east side of the Turnpike. The Resident/Inspector shall notify the MaineDOT Region Two office and the Town of West Gardiner prior to closing the High Street bridge.

Maine Turnpike Traffic Control Requirements

This Section outlines the minimum requirements that shall be maintained for work on, over, or adjacent to the Maine Turnpike roadway. Operations are allowed as outlined in Table A and Table B below.

Bridge work directly over traffic or within six feet of a travel lane as measured from the painted pavement marking line or traffic control device will require a lane closure. This work includes but is not limited to the following:

1. Installing and removing shielding
2. Superstructure demolition
3. Unbolting structural steel
4. Removing structural steel
5. Erecting structural steel or concrete beams
6. Installing and removing deck and diaphragm forms
7. Erecting or moving sign panels on bridges
8. Bolting structural steel
9. Painting structural steel

When approved by the Resident, Items 3, 6 and 8 may be performed over traffic if a temporary floor is provided between the bottom flanges of the beams.

During the erection or removal of structural steel traffic shall be stopped and may be held for periods of up to 25 minutes during these operations. Before the roadway is reopened, all materials shall be secured so they will not endanger traffic passing underneath. The Contractor will reimburse the Authority at the rate of \$2,500.00 per five-minute period for each roadway not reopened (northbound and southbound), in excess of the 25 minute limit. Total penalty shall be deducted from the next pay estimate.

Shoulder Closures

Shoulder closures lasting more than three consecutive days shall use temporary concrete barrier to protect the work area and workers as shown in the shoulder work zone plans. Drums and barrier shall not impede on the width of the adjacent through lane. Shoulder closures are anticipated for median pier repair work at both the Winthrop Road bridge and the High Street bridge.

TABLE A: WINTHROP ROAD UNDERPASS BRIDGE (MM 108.30)
AND HIGH STREET UNDERPASS BRIDGE (MM 103.60)

Mainline Northbound April 1, 2017 to May 19, 2017 October 17, 2017 to December 20, 2017 See Note 1					
		Equipment Moves	Turnpike Shoulder Closures	Turnpike Single Lane Closures	Removing / Erecting Structural Steel
Time of Day:	Anytime		Allowed (median only)		
Days of Week:	Monday through Thursday (daytime)				
Time of Day:	9:00 a.m. to 3:00 p.m.	Allowed	Allowed	Allowed	
Days of Week:	Sunday p.m. through Friday a.m.				
Time of Day:	7:00 p.m. to 6:30 a.m. next day	Allowed	Allowed	Allowed	
Time of Day:	10:00 p.m. to 5:00 a.m. next day	Allowed	Allowed	Allowed	Allowed
Days of Week:	Friday (daytime)				
Time of Day:	9:00 a.m. to 1:30 p.m.	Allowed	Allowed	Allowed	

Mainline Southbound April 1, 2017 to May 19, 2017 October 17, 2017 to December 20, 2017 See Note 1					
		Equipment Moves	Turnpike Shoulder Closures	Turnpike Single Lane Closures	Removing / Erecting Structural Steel
Time of Day:	Anytime		Allowed (median only)		
Days of Week:	Sunday p.m. through Friday a.m.				
Time of Day:	7:00 p.m. to 2:00 p.m. next day	Allowed	Allowed	Allowed	
Time of Day:	10:00 p.m. to 5:00 a.m. next day	Allowed	Allowed	Allowed	Allowed
Days of Week:	Friday (daytime)				
Time of Day:	5:00 a.m. to 10:30 a.m.	Allowed	Allowed	Allowed	

Mainline Northbound May 22, 2017 to June 29, 2017 September 11, 2017 to October 12, 2017 See Notes 1, 2, and 3					
		Equipment Moves	Turnpike Shoulder Closures	Turnpike Single Lane Closures	Removing / Erecting Structural Steel
Time of Day:	Anytime		Allowed (median only)		
Days of Week:	Monday through Thursday (daytime)				
Time of Day:	9:00 a.m. to 2:00 p.m.	Allowed	Allowed		
Days of Week:	Sunday p.m. through Friday a.m.				
Time of Day:	7:00 p.m. to 7:00 a.m. next day	Allowed	Allowed	Allowed	
Time of Day:	10:00 p.m. to 5:00 a.m. next day	Allowed	Allowed	Allowed	Allowed

Mainline Southbound May 22, 2017 to June 29, 2017 September 11, 2017 to October 12, 2017 See Notes 1, 2, and 3					
		Equipment Moves	Turnpike Shoulder Closures	Turnpike Single Lane Closures	Removing / Erecting Structural Steel
Time of Day:	Anytime		Allowed (median only)		
Days of Week:	Sunday p.m. through Thursday p.m.				
Time of Day:	7:00 p.m. to 1:30 p.m. next day	Allowed	Allowed	Allowed	
Time of Day:	10:00 p.m. to 5:00 a.m. next day	Allowed	Allowed	Allowed	Allowed
Days of Week:	Friday				
Time of Day:	Midnight to 5:00 a.m.	Allowed	Allowed	Allowed	Allowed
Time of Day:	Midnight to 11:00 a.m.	Allowed	Allowed	Allowed	

Mainline Northbound and Southbound July 10, 2017 to September 7, 2017 See Notes 1 & 3					
		Equipment Moves	Turnpike Shoulder Closures	Turnpike Single Lane Closures	Removing / Erecting Structural Steel
Days of Week:	Sunday p.m. through Friday a.m.				
Time of Day:	7:00 p.m. to 7:00 a.m. next day	Allowed	Allowed	Allowed	
Time of Day:	10:00 p.m. to 5:00 a.m. next day	Allowed	Allowed	Allowed	Allowed

TABLE B: WINTHROP ROAD BRIDGE CLOSURE

Mainline Northbound 55-Day Bridge Closure September 5, 2017 to October 30, 2017 See Notes 1 & 2					
		Equipment Moves	Turnpike Shoulder Closures	Turnpike Single Lane Closures	Removing / Erecting Structural Steel
Day of Week:	Monday through Thursday				
Time of Day:	See above for the periods September 11, 2017 to October 12, 2017 and for October 17, 2017 to October 30, 2017.				
Day of Week:	Friday				
Time of Day:	7:00 p.m. to Midnight	Allowed	Allowed	Allowed	
Time of Day:	10:00 p.m. to Midnight	Allowed	Allowed	Allowed	Allowed
Day of Week:	Saturday				
Time of Day:	Midnight to 6:30 a.m.	Allowed	Allowed	Allowed	Allowed
Time of Day:	Midnight to 8:30 a.m.	Allowed	Allowed	Allowed	
Time of Day:	1:30 p.m. to Midnight	Allowed	Allowed	Allowed	
Time of Day:	9:00 p.m. to Midnight	Allowed	Allowed	Allowed	Allowed
Day of Week:	Sunday				
Time of Day:	Anytime	Allowed	Allowed	Allowed	
Time of Day:	Midnight to 7:30 a.m.	Allowed	Allowed	Allowed	Allowed
Time of Day:	9:00 p.m. to Midnight	Allowed	Allowed	Allowed	Allowed

Mainline Southbound 55-Day Bridge Closure September 5, 2017 to October 30, 2017 See Notes 1 & 2					
		Equipment Moves	Turnpike Shoulder Closures	Turnpike Single Lane Closures	Removing / Erecting Structural Steel
Day of Week:	Monday through Thursday				
Time of Day:	See above for the periods September 11, 2017 to October 12, 2017 and for October 17, 2017 to October 30, 2017.				
Day of Week:	Friday				
Time of Day:	7:00 p.m. to Midnight	Allowed	Allowed	Allowed	
Time of Day:	10:00 p.m. to Midnight	Allowed	Allowed	Allowed	Allowed
Day of Week:	Saturday				
Time of Day:	Midnight to 7:00 a.m.	Allowed	Allowed	Allowed	Allowed
Time of Day:	Midnight to 9:30 a.m.	Allowed	Allowed	Allowed	

Time of Day:	2:00 p.m. to Midnight	Allowed	Allowed	Allowed	
Time of Day:	9:00 p.m. to Midnight	Allowed	Allowed	Allowed	Allowed
Day of Week:	Sunday				
Time of Day:	Midnight to 7:30 a.m.	Allowed	Allowed	Allowed	Allowed
Time of Day:	Midnight to 10:00 a.m.	Allowed	Allowed	Allowed	
Time of Day:	6:30 p.m. to Midnight	Allowed	Allowed	Allowed	
Time of Day:	8:30 p.m. to Midnight	Allowed	Allowed	Allowed	Allowed

NOTE 1:

Lane Closures shall be removed if construction is not ongoing. Unattended lane closures are not allowed.

Construction vehicles are prohibited from merging with mainline traffic after noon on Fridays between June 16th and September 8th unless the merge occurs at an interchange.

NOTE 2:

There shall be no shoulder closures or lane closures permitted along the Turnpike over the following dates:

- May 26-29, 2017
- June 30-July 9, 2017

During the Winthrop Road Bridge 55-day closure period, weekend shoulder closure and/or lane closures will be permitted along the Turnpike as shown in Table B, subject to the holiday restrictions imposed by the Authority and the following additional limitation:

- September 23, 2017: No Southbound shoulder or lane closures from 9:30 a.m. to 7:30 p.m.
- September 24, 2017: No Southbound shoulder or lane closures from 10:00 a.m. to 7:30 p.m.
- October 7, 2017: No Northbound or Southbound shoulder or lane closures from 9:00 a.m. to 6:00 p.m.

NOTE 3:

The High Street Bridge (MM 103.60) may be closed for not more than 21 days. In accordance with Section 107, the High Street bridge closure may not begin before June 20, 2017 or the day following the last day of the 2016-2017 school year (latest date shall apply). All High Street bridge work shall be completed on or before August 18, 2017.