

**MAINE TURNPIKE AUTHORITY**

**ADDENDUM NO. 2**

**CONTRACT 2015.06**

**INTERCHANGE 36 SACO TOLL PLAZA LANE ADDITION (MM 36.0) & VARIABLE  
MESSAGE SIGN RELOCATION (MM 28.3)**

**Make the following changes to the bid documents:**

**NOTICE TO CONTRACTORS**

In the Contract Documents, **REMOVE** sheets N-1 and N-2 and **REPLACE** with the attached revised Sheets N-1 and N-2. The revisions to the notice to contractors are due to the following changes:

The Bid Opening date and time is hereby changed to Friday, March 20, 2015 at 11:00 am.

**REMOVE** the second sentence of the first paragraph and **REPLACE** with:

“Bids will be accepted from Contractors **prequalified** by the Maine Department of Transportation for Highway or Bridge Construction Projects with an electrical subcontractor **prequalified** by the Maine Department of Transportation for Traffic Signals and Lighting Projects.”

**ADD** a sentence after the above sentence:

“The concrete slab work must be completed by a contractor **prequalified** by the Maine Department of Transportation for Bridge Construction Projects.”

**PROPOSAL**

In the Contract Documents, **REMOVE** sheets P-3 through P-13 and **REPLACE** with the attached revised sheets P-3 through P-13. The revisions to the proposal sheets are due to the following quantity revisions:

**CHANGE IN QUANTITY** Item 304.10 Aggregate Base Course – Gravel: 1,910 CY

**CHANGE IN QUANTITY** Item 403.208 Hot Mix Asphalt, 12.5 mm Nominal Maximum Size,  
Surface: 340 T

**ADDED** Item 527.301 Energy Absorbing System (CAT): 1 EA

**CHANGE IN QUANTITY** Item 606.2401 Guardrail Type 3D – Double Rail: 1,062.5 LF

**CHANGE IN QUANTITY** Item 606.2652 Terminal End – Remove and Stack: 2 EA

**CHANGE IN QUANTITY** Item 606.353 Delineator Post: 10 EA

**CHANGE IN QUANTITY** Item 645.109 Remove and Reset Sign: 21 EA

## **SPECIAL PROVISIONS**

In the Contract Documents, **REMOVE** sheet SP-14 and **REPLACE** with the attached revised Sheet SP-14. The revision to Section 107.1 is due to the following changes:

**REMOVE** the first paragraph of Section 107.1 Contract Time and Contract Completion Date and **REPLACE** with:

“Contract Start date shall be on or before April 6, 2015 at the discretion of the Authority, and all work shall be completed on or before October 30, 2015. The construction of all lane additions, guardrail, tolling equipment shall be substantially complete by October 2, 2015.”

In the Contract Documents, **REMOVE** sheet SP-53 and **REPLACE** with the attached revised Sheets SP-53, due to a revision to the total thickness of the full depth roadway widening binder course.

In the Contract Documents, **REMOVE** sheet SP-54 and **REPLACE** with the attached revised Sheets SP-54, due to a revision to a revision to the first sentence.

In the Contract Documents, **ADD** Part 2-Special Provisions, Section 527 ENERGY ABSORBING UNIT (Energy Absorbing System (CAT)).

## **PLANS**

In the Addendum No. 1 Plans, **REMOVE** sheet 2 and **REPLACE** with the attached revised Sheets 2.

In the Contract Plans, **REMOVE** sheets 18, 21, 23, 26 and 28 and **REPLACE** with the attached revised Sheets 18, 21, 23, 26 and 28.

## **QUESTIONS**

The following are questions submitted to the Maine Turnpike Authority in writing. Answers to the questions are noted. Bidders shall utilize this information in preparing their documents.

**Q:** Is there a plan available showing existing and proposed grades for the mill and fill area at STA 109+00 – 111+50?

**A:** Not at this time.

**Q:** The Table on page SP-53 under Full Depth Roadway Widening has comp. note L requiring hot rubber joint seal on all layers of pavement, but note 4 on sheet 5 of 54 indicates hot rubber only on the final surface layer of pavement, could you please clarify?

**A:** Note 4 on Sheet 5 of 54 is correct. The L requirement has been revised

**Q:** On the same page under Traffic Island has the same note L. Will hot rubber be required for the pavement which caps the island?

**A:** No.

**Q:** SP-53 under Full Depth Roadway Widening, binder thickness is listed at 1 ½". Details A & D on plan sheet 5 of 54 shows 2" thickness. Which is correct?

**A:** 2" is correct. See revised Sheet SP-53.

Note: the above items shall be considered as part of the bid submittal.

The total number of pages included with this addendum is twenty-two (22) and six (6) revised Contract Plan sheets.

All bidders are requested to acknowledge the receipt of the Addendum No. 1 by signing below and faxing this sheet to Nate Carll, Purchasing Department, (207) 871-7739. Bidders are also required to acknowledge receipt of this Addendum No. 2 on Page P-14 of the bid package.

\_\_\_\_\_  
Business Name

\_\_\_\_\_  
Print Name and Title

\_\_\_\_\_  
Signature

\_\_\_\_\_  
Date

March 9, 2015

Very truly yours,  
MAINE TURNPIKE AUTHORITY

\_\_\_\_\_  
Nathanial F. Carll  
Purchasing Manager  
Maine Turnpike Authority

MAINE TURNPIKE AUTHORITY

NOTICE TO CONTRACTORS

Sealed Proposals will be received by the Maine Turnpike Authority for:

CONTRACT 2015.06

SACO TOLL PLAZA LANE ADDITION (INTERCHANGE 36 SACO TOLL PLAZA)  
& VARIABLE MESSAGE SIGN (VMS) RELOCATION TO MAINLINE IN ARUNDEL  
(MM 28.3)

at the office of the Maine Turnpike Authority, 2360 Congress Street, Portland, ME, until 11:00 a.m., prevailing time as determined by the Authority on March 20, 2015 at which time and place the Proposals will be publicly opened and read. Bids will be accepted from Contractors **prequalified** by the Maine Department of Transportation for Highway or Bridge Construction Projects with an electrical subcontractor **prequalified** by the Maine Department of Transportation for Traffic Signals and Lighting Projects. The concrete slab work must be completed by a contractor **prequalified** by the Maine Department of Transportation for Bridge Construction Projects. All other bids may be rejected. This Project includes a wage determination developed by the State of Maine Department of Labor.

The work consists of the addition of a dedicated lane to the right side of the existing on ramp toll plaza beginning 600 feet west of the Saco Exit 36 Toll Plaza on I-195 and extending easterly 1160 feet to approximately 400 feet east of the Saco Exit 36 Toll Plaza. The widening will include widening existing road embankment with geofoam and granular material, replacement/relocation of existing guardrail, constructing a separating island, provisions for toll equipment including an overhead gantry and maintenance or traffic. In addition the project includes relocating an existing overhead Variable Message Sign (VMS) and its structure, controls and controller cabinet at Interchange 36 in the Saco side plaza to a location on the southbound mainline near Limerick Road in Arundel (MM 28.3); constructing two new VMS drilled shaft foundations; constructing a new controller cabinet foundation, adding new guardrail; widening the embankment and extending a drainage pipe for the new guardrail; modifying the median guardrail; providing electrical service; and all other work incidental thereto in accordance with the Plans and Specifications.

The general limits of work are at Mile 28.3 (Station 1360+00) in Arundel and at Mile 36.0 (Exit 36 Interchange at Saco Toll Plaza on 195) in Saco.

Plans and Contract Documents may be examined by prospective Bidders weekdays between 8:00 a.m. and 4:30 p.m. at the office of the Maine Turnpike Authority, 2360 Congress Street, Portland, Maine. **The full size Plans** and Contract Documents may be obtained from the Authority upon payment of One Hundred and Fifteen (\$115.00) Dollars for each set, which payment will not be returned. **The half size plans** and Contract documents may be obtained from the Authority upon payment of Eighty Five (\$85.00) dollars for each set, which payment will not be returned. Checks shall be made payable to: Maine Turnpike Authority. The plans and Contract

documents may also be downloaded from a link on our website at <http://www.maineturnpike.com/project-and-planning/Construction-Contracts.aspx> .

For general information regarding Bidding and Contracting procedures, contact Nate Carll, Purchasing Manager, at (207) 871-7771 Ext. 105. For information regarding Schedule of Items, plan holders list and bid results, visit our website at <http://www.maineturnpike.com/project-and-planning/Construction-Contracts.aspx> . For Project specific information, fax all questions to Nate Carll, Purchasing Manager, at (207) 871-7739. Responses will not be prepared for questions received by telephone. Bidders shall not contact any other Authority staff or Consultants for clarification of Contract provisions, and the Authority will not be responsible for any interpretations so obtained.

All work shall be governed by the Specifications entitled "State of Maine, Department of Transportation, Standard Specifications, Revision of December 2002", "Standard Details, Revision of December 2002" and "Best Management Practices for Erosion and Sediment Control", latest issue. Copies and recent updates to these publications can be downloaded at: <http://www.maine.gov/mdot/contractors/publications/> .

Proposals must be accompanied by an original bid bond, certified or cashier's check payable to the Maine Turnpike Authority in an amount not less than Five (5%) Percent of the Total Amount in the Proposal, but not less than \$500.00. The Bidder to whom a Contract is awarded will be required to furnish a Surety Corporation Bond, satisfactory to the Authority, on the standard Contract Bond form of the Authority, for a sum not less than the Total Amount of the Proposal.

Proposals must be made upon the Proposal Forms furnished by the Authority separately with the Contract Documents, and must be enclosed in the sealed special addressed envelope provided therefore bearing the name and address of the Bidder, the name of the Contract, and the date and time of Proposal opening on the outside.

A pre-bid conference will be held on March 9, 2015 at 9:00 a.m. at the Maine Turnpike Authority, 2360 Congress Street, Portland, Maine.

The Authority reserves the unqualified right to reject any or all Proposals and to accept that Proposal which in its sole judgment will under all circumstances serve its best interest.

MAINE TURNPIKE AUTHORITY

Nate Carll  
Purchasing Manager  
Maine Turnpike Authority

Portland, Maine

**SCHEDULE OF BID PRICES**  
**CONTRACT NO. 2015.06**  
**Interchange 36**  
**Saco Toll Plaza Lane Addition (MM 36.0) &**  
**Variable Message Sign Relocation (MM 28.3)**

Item No	Item Description	Units	Approx. Quantities	Unit Prices in Numbers		Bid Amount in Numbers	
				Dollars	Cents	Dollars	Cents
202.1271	REMOVING EXISTING BITUMINOUS PAVEMENT	Cubic Yard	200				
202.203	PAVEMENT BUTT JOINTS	Square Yard	350				
203.20	COMMON EXCAVATION	Cubic Yard	4,905				
203.24	COMMON BORROW	Cubic Yard	90				
203.25	GRANULAR BORROW	Cubic Yard	15				
203.43	GEOFOAM LIGHTWEIGHT FILL	Cubic Yard	2,550				
203.45	LEVELING SAND	Cubic Yard	500				
206.082	STRUCTURAL EARTH EXCAVATION - MAJOR STRUCTURES	Cubic Yard	30				
304.09	AGGREGATE BASE COURSE - CRUSHED	Cubic Yard	450				
304.10	AGGREGATE SUBBASE COURSE - GRAVEL	Cubic Yard	1,910				
403.207	HOT MIX ASPHALT, 19.0 mm NOMINAL MAXIMUM SIZE	Ton	450				

**CARRIED FORWARD:**

Item No	Item Description	Units	Approx. Quantities	Unit Prices in Numbers		Bid Amount in Numbers	
				Dollars	Cents	Dollars	Cents
BROUGHT FORWARD:							
403.208	HOT MIX ASPHALT, 12.5 mm NOMINAL MAXIMUM SIZE, SURFACE	Ton	340				
403.209	HOT MIX ASPHALT, 9.5 mm NOMINAL MAXIMUM SIZE (ISLAND & INCIDENTALS)	Ton	70				
403.21	HOT MIX ASPHALT, 9.5 mm	Ton	100				
403.213	HOT MIX ASPHALT, 12.5 mm NOMINAL MAXIMUM SIZE, BASE	Ton	400				
409.15	BITUMINOUS TACK COAT, APPLIED	Gallon	200				
419.30	SAWING BITUMINOUS PAVEMENT	Linear Foot	1,300				
502.111	STRUCTURAL CONCRETE FOOTING	Cubic Yard	10				
502.266	STRUCTURAL CONCRETE PLAZA SLAB ON GRADE	Cubic Yard	25				
502.56	CONCRETE FILL	Cubic Yard	10				
503.14	EPOXY - COATED REINFORCING STEEL, FABRICATED AND DELIVERED	Pound	1,350				
503.15	EPOXY - COATED REINFORCING STEEL, PLACING	Pound	1,350				
503.18	GLASS FIBER REINFORCED POLYMER (GFRP) REINFORCING BARS, FABRICATED AND DELIVERED	Pound	1,810				

**CARRIED FORWARD:**



Item No	Item Description	Units	Approx. Quantities	Unit Prices in Numbers		Bid Amount in Numbers	
				Dollars	Cents	Dollars	Cents
BROUGHT FORWARD:							
503.19	GLASS FIBER REINFORCED POLYMER (GFRP) REINFORCING BARS, PLACING	Pound	1,810				
503.90	SYNTHETIC FIBER REINFORCEMENT	Pound	175				
506.30	SHOP COATING OF STRUCTURAL STEEL	Lump Sum	1				
515.202	CLEAR PROTECTIVE COATING FOR CONCRETE SURFACES	Square Yard	210				
515.23	EPOXY OVERLAY	Square Yard	12				
518.51	REPAIR OF UPWARD FACING SURFACES - BELOW REINFORCING STEEL, <200 mm	Square Foot	22				
526.306	TEMPORARY CONCRETE BARRIER, TYPE I - SUPPLIED BY AUTHORITY (1,810 LF)	Lump Sum	1				
526.311	PERMANENT CONCRETE BARRIER TYPE I	Linear Foot	70				
526.342	PERMANENT CONCRETE BARRIER TYPE I TRANSITION	Each	2				
527.301	ENERGY ABSORBING SYSTEM (CAT)	Each	1				
527.342	WORK ZONE CRASH CUSHIONS TL-2	Each	1				
602.30	FLOWABLE CONCRETE FILL	Cubic Yard	15				

**CARRIED FORWARD:**

Item No	Item Description	Units	Approx. Quantities	Unit Prices in Numbers		Bid Amount in Numbers	
				Dollars	Cents	Dollars	Cents
BROUGHT FORWARD:							
603.152	16 INCH HDPE PIPE	Linear Foot	38				
603.175	18 INCH REINFORCED CONCRETE PIPE - CLASS III	Linear Foot	23				
604.248	CATCH BASIN TYPE F6	Each	1				
606.1724	BRIDGE TRANSITION - TYPE III (MODIFIED)	Each	2				
606.24	GUARDRAIL TYPE 3D - SINGLE RAIL	Linear Foot	1,850				
606.2401	GUARDRAIL TYPE 3D - DOUBLE RAIL	Linear Foot	1,062.5				
606.2652	TERMINAL END - REMOVE AND STACK	Each	2				
606.278	TERMINAL END - ANCHORED END	Each	2				
606.279	TERMINAL END - ANCHORED END, THRIE BEAM	Each	1				
606.352	REFLECTORIZED BEAM GUARDRAIL DELINEATOR	Each	18				
606.353	DELINEATOR POST	Each	10				
606.354	DELINEATOR POST - REMOVE AND RESET	Each	6				

**CARRIED FORWARD:**

Item No	Item Description	Units	Approx. Quantities	Unit Prices in Numbers		Bid Amount in Numbers	
				Dollars	Cents	Dollars	Cents
BROUGHT FORWARD:							
606.3605	GUARDRAIL - REMOVE, MODIFY AND RESET, SINGLE RAIL	Linear Foot	112.5				
606.3631	GUARDRAIL - REMOVE AND DISPOSE	Linear Foot	1,612.5				
606.48	SINGLE GALVANIZED STEEL POST	Each	16				
606.65	GUARDRAIL THRIE BEAM - SINGLE RAIL	Linear Foot	150				
606.701	ASYMMETRICAL THRIE BEAM TRANSITION	Each	3				
606.80	GUARDRAIL 350 FLEAT TERMINAL	Each	1				
609.11	VERTICAL CURB TYPE 1	Linear Foot	430				
609.12	VERTICAL CURB TYPE 1 - CIRCULAR	Linear Foot	20				
609.234	TERMINAL CURB TYPE 1 - 4 FT	Each	2				
609.441	CURBING REMOVE AND STACK	Linear Foot	100				
610.08	PLAIN RIPRAP	Cubic Yard	10				
610.18	STONE DITCH PROTECTION	Cubic Yard	10				

**CARRIED FORWARD:**

Item No	Item Description	Units	Approx. Quantities	Unit Prices in Numbers		Bid Amount in Numbers	
				Dollars	Cents	Dollars	Cents
BROUGHT FORWARD:							
613.319	EROSION CONTROL BLANKET	Square Yard	4,350				
615.07	LOAM	Cubic Yard	510				
618.1401	SEEDING METHOD NUMBER 2, PLAN QUANTITY	Unit	10				
618.1411	SEEDING METHOD NUMBER 3, PLAN QUANTITY	Unit	34				
619.1201	MULCH, PLAN QUANTITY	Unit	44				
619.1202	TEMPORARY MULCH	Unit	34				
620.58	EROSION CONTROL GEOTEXTILE	Square Yard	40				
620.625	CELLULAR CONFINEMENT SYSTEM	Square Yard	300				
620.70	HDPE GEOMEMBRANE	Square Yard	2,900				
626.11	PRECAST CONCRETE JUNCTION BOX	Each	1				
626.31	18 in FOUNDATION	Each	8				
626.32	24 in FOUNDATION	Each	1				

**CARRIED FORWARD:**

Item No	Item Description	Units	Approx. Quantities	Unit Prices in Numbers		Bid Amount in Numbers	
				Dollars	Cents	Dollars	Cents
BROUGHT FORWARD:							
626.331	30-INCH DIA., GREATER THAN 8- FEET LONG, AND ALL 36-INCH AND 42-INCH DIA. FOUNDATIONS	Cubic Yard	13				
626.36	REMOVE OR MODIFY CONCRETE FOUNDATION	Each	8				
626.38	GROUND MOUNTED CABINET FOUNDATION	Each	1				
627.73	TEMPORARY 6 INCH PAVEMENT MARKING TAPE	Linear Foot	4,900				
627.731	TEMPORARY 6 INCH BLACK PAVEMENT MARKING TAPE	Linear Foot	2,900				
629.05	HAND LABOR, STRAIGHT TIME	Hour	28				
631.10	AIR COMPRESSOR (INCLUDING OPERATOR)	Hour	8				
631.12	ALL PURPOSE EXCAVATOR (INCLUDING OPERATOR)	Hour	20				
631.13	BULLDOZER (INCLUDING OPERATOR)	Hour	20				
631.172	TRUCK - LARGE (INCLUDING OPERATOR)	Hour	40				
631.22	FRONT END LOADER (INCLUDING OPERATOR)	Hour	20				
631.32	CULVERT CLEANER (INCLUDING OPERATOR)	Hour	20				

**CARRIED FORWARD:**

Item No	Item Description	Units	Approx. Quantities	Unit Prices in Numbers		Bid Amount in Numbers	
				Dollars	Cents	Dollars	Cents
BROUGHT FORWARD:							
631.36	FOREMAN	Hour	8				
631.50	JACKHAMMER (AIR TOOL INCLUDING OPERATOR)	Hour	8				
631.51	BUCKET TRUCK	Hour	8				
631.52	SCISSOR LIFT	Hour	8				
631.53	ELECTRICIAN	Hour	8				
631.54	ELECTRICIAN'S APPRENTICE	Hour	8				
634.25	SERVICE POLE COMPLETE WITH CABINET AND CONTROLS	Each	1				
643.712	LANE USE SIGNAL	Each	1				
645.105	REMOVE AND STACK SIGN	Each	6				
645.109	REMOVE AND RESET SIGN	Each	21				
645.123	REMOVAL, DISASSEMBLY AND RELOCATION OFVMS AND SUPPORTING STRUCTURE	Lump Sum	1				
645.161	BREAKAWAY DEVICE SINGLE POLE	Each	1				

**CARRIED FORWARD:**

Item No	Item Description	Units	Approx. Quantities	Unit Prices in Numbers		Bid Amount in Numbers	
				Dollars	Cents	Dollars	Cents
BROUGHT FORWARD:							
645.289	STEEL H-BEAM POLES	Pound	1,150				
645.303	REMOVE AND RESET DELINEATOR	Each	6				
645.403	INSTALLATION OF TYPE 1 SIGNS	Each	13				
652.30	FLASHING ARROW	Each	3				
652.312	TYPE III BARRICADES	Each	3				
652.33	DRUM	Each	150				
652.35	CONSTRUCTION SIGNS	Square Foot	1,529.5				
652.361	MAINTENANCE OF TRAFFIC CONTROL DEVICES	Lump Sum	1				
652.41	PORTABLE - CHANGEABLE MESSAGE SIGN	Each	2				
652.45	TRUCK MOUNTED ATTENUATOR	Cal. Day	10	125	00	1,250	00
655.012	INSTALLATION OF CASH LANE CONTROLLER CABINET	Each	1				
655.02	DVAS MOUNT INSTALLATION	Each	1				

**CARRIED FORWARD:**

Item No	Item Description	Units	Approx. Quantities	Unit Prices in Numbers		Bid Amount in Numbers	
				Dollars	Cents	Dollars	Cents
BROUGHT FORWARD:							
655.04	INSTALLATION OF SENSOR LOOPS	Lump Sum	1				
655.05	INSTALLATION OF AVI ANTENNAS	Each	1				
655.07	TRAFFIC CONTROL PEDESTAL PREPARATION WORK	Each	1				
655.11	#10 AWG WIRE	Linear Foot	450				
655.12	#12 AWG WIRE	Linear Foot	600				
655.13	#14 AWG WIRE	Linear Foot	50				
655.14	4pr/24 (CATEGORY 5e) CABLE	Linear Foot	1,700				
655.16	FIBER OPTIC CABLE - 6 FIBER	Linear Foot	600				
655.17	IVIS HOMERUN LOOP CABLE (IMSA 50-2 #16)	Linear Foot	400				
655.203	1 1/2" SCHEDULE 80 PVC CONDUIT	Linear Foot	50				
655.2031	2" SCHEDULE 80 PVC CONDUIT	Linear Foot	175				
655.204	3" SCHEDULE 80 PVC CONDUIT	Linear Foot	10				

**CARRIED FORWARD:**



Item No	Item Description	Units	Approx. Quantities	Unit Prices in Numbers		Bid Amount in Numbers	
				Dollars	Cents	Dollars	Cents
BROUGHT FORWARD:							
655.2071	2" GALVANIZED RIGID METAL CONDUIT	Linear Foot	190				
655.2102	2" LIQUID TIGHT METALLIC FLEX CONDUIT	Linear Foot	20				
655.223	TYPE D PULL BOX OUTDOOR CANOPY	Each	4				
655.81	KEY SWITCH	Each	2				
656.50	BALED HAY, IN PLACE	Each	60				
656.60	TEMPORARY BERMS	Linear Foot	600				
656.62	TEMPORARY SLOPE DRAINS	Linear Foot	30				
656.632	30 INCH TEMPORARY SILT FENCE	Linear Foot	1,750				
659.10	MOBILIZATION	Lump Sum	1				
669.01	BOLLARD	Each	4				
800.501	TOLL GANTRY INSTALLATION	Lump Sum	1				
TOTAL:							

- If the cumulative area of disturbance exceeds the estimated LOD noted above, by less than one acre, the Resident shall have a minimum of five (5) working days to approve the revised LOD plan.
- If the cumulative area of disturbance exceeds the estimated LOD noted above, by over one acre, the Resident shall first approve of the plan and then possibly resubmit the NOI for MaineDEP approval. The approval may take a minimum of 21 working days.
- The Contractor shall submit a NOI form to Maine DEP within 20 days of the completion of construction or permanent stabilization of the site and disturbed areas.

Compliance with the erosion and sedimentation control requirements outlined in this Contract is required by the Contractor.

The Contractor shall comply with the conditions outlined in the Maine Department of Environmental Protection NRPA Permit by Rule, and the Maine Pollutant Discharge Elimination System General Permit for stormwater discharge associated with construction activity. The Contractor shall indemnify and hold harmless the Maine Turnpike Authority or its agents, representatives and employees against any and all claims, liabilities or fines arising from or based on the violation of the above noted permits.

**This Project is also subject to the requirements of the Maine Pollutant Discharge and Elimination System (MPDES) General Permit for the Discharge of Stormwater from MTA's Municipal Separate Storm Sewer Systems (MS4), because it is located within an Urbanized Area (UA) as defined by the 2000 census by the U.S. Bureau of the Census. MS4 compliance requires all Contractors to be properly trained in Erosion and Sedimentation Control (ESC) measures (as per Special Provision Subsections 105.8.1 and 656.07) and implement measures to reduce pollutants in stormwater runoff from construction activities.**

#### 107.1 Contract Time and Contract Completion Date

This Subsection is amended by the addition of the following:

Contract start date shall be on or before April 6, 2015 at the discretion of the Authority, and all work shall be completed on or before October 30, 2015. The construction of all lane additions, guardrail, tolling equipment shall be substantially complete by October 2, 2015.

##### 107.1.1 Substantial Completion

This Subsection is amended by the addition of the following:

Substantially complete for the work at the Saco Exit 36 toll Plaza shall be defined by the Authority as the following:

- Additional lane open to traffic with final striping complete, guardrail installed, tolling equipment operational and signage completed at Saco Toll Plaza.

Liquidated damages on a calendar day basis in accordance with Subsection 107.7.2 shall be assessed for each calendar day that project completion is not achieved. Liquidated damages of Two Thousand Five Hundred (\$2,500) Dollars per calendar day shall be assessed for each calendar day that the Saco

SPECIAL PROVISION

SECTION 403

HOT MIX ASPHALT PAVEMENTS

Desc. of Course	Grad. Design	Item Number	Bit Cont. % of Mix	Total Thick	No. Of Layers	Comp. Notes
<b>Full Depth Roadway Widening</b>						
Wearing	12.5 mm	403.208	5.2 min. to 6.4	1-1/2 in.	1	A, B, D, E, L
Binder	12.5 mm	403.213	5.2 min. to 6.4	2 in.	1	A, B, D, E, L
Base	19 mm	403.207	4.7 min. to 6.1	4 in	2	A, B, D, E, L
<b>Traffic Island</b>						
Wearing	9.5 mm	403.209	5.7 min. to 6.4	2 in	1	A, B, D, F, G, L
<b>Full Width I-195 Westbound (Station 109+00 +/- to Station 111+50 +/-, left)</b>						
Wearing	9.5 mm	403.21	5.7 min. to 6.4	1-1/2 in	1	A, B, D, F, L

COMPLEMENTARY NOTES

- A. The bituminous binder material for this mixture shall be PG 64-28.
- B. The contractor shall furnish a quality control technician with a thin lift nuclear density gauge to ensure density requirements are met.
- C. Bridge decks. No RAP is allowed. The use of an oscillating steel roller shall be used to compact all hot mix asphalts placed on
- D. The aggregate qualities shall meet the design traffic level of 3 to <10 million ESALS for mix placed under this contract. The design verification, Quality Control, and Acceptance tests for this mix will be performed at **75 gyrations**. (N design)
- E. Section 106.6, Acceptance, (1) Method A. (MaineDOT Standard Specification- December 2002).
- F. Section 106.6, Acceptance, (2) Method C (MaineDOT Standard Specification- December 2002).
- G. A **“FINE”** 9.5 mm mix with a gradation above or through the restricted zone shall be used for this item.
- H. A mixture meeting the gradation of 12.5 mm hot mix asphalt may be used at the option of the Contractor.
- I. A mixture meeting the gradation of 9.5 mm hot mix asphalt may be used at the option of the Contractor.
- J. A mixture meeting the requirements of Subsection 703.09, Grading ‘D’, with a minimum PGAB content of six percent, and the limits of Special Provision 401, Table 9 (Drives and Sidewalks) for PGAB content and gradation may be substituted for this item. A job mix formula shall be submitted to the Resident for approval.

- K. Any base or binder mix left exposed to traffic over the winter shall have a layer of 12.5 mm mix substituted for the 19 mm mix. If this substitution is made, the specified layers may need to be modified, as approved by the Resident.
- L. Joints shall conform to Subsection 401.17 below.
- M. Match existing pavement thickness.

#### 401.03 Composition of Mixture

This Subsection is deleted in its entirety and replaced with the following:

The Contractor shall submit a current MaineDOT approved job mix formula to the Resident at least 30 days prior to the placement of bituminous pavement. Submission shall include a description of where the submitted mix is currently in use on a MaineDOT Project. Bituminous pavement shall not be placed until after the job mix formula is approved by the Resident.

#### 401.6 Weather and Seasonal Limitations

This Subsection is deleted in its entirety and replaced with the following:

The Contractor shall not place any hot mix asphalt on a wet or frozen surface. The air temperature shall be 40°F or higher when placing non-surface mix, and 45°F or higher when placing shim or surface mix.

#### 401.17 Joints

The surface layer of all saw cut and pavement joints shall be sealed as specified herein.

The fourth paragraph is amended as follows:

The words “emulsified asphalt” are deleted and replaced with “joint sealant, conforming to Federal Specification SS-S-1401C”.

The following sentence is added after the last paragraph:

The Contractor shall submit to the Resident a manufacturer’s certification for the joint sealant (SS-S-1401C).

#### 401.204 Opening to Traffic

No vehicular traffic or loads shall be permitted on newly completed pavement until adequate stability has been attained and the material has cooled sufficiently to prevent distortion or loss of fines. The newly paved area may be opened to traffic after the internal temperature of the pavement has cooled to 120°F. The Resident will test the internal temperature of the pavement and shall be the sole judge as to the opening to traffic. The period of time before opening to traffic may be extended at the discretion of the Resident. The lane closure may not be removed until the internal temperature has cooled to 120°F.

#### 401.205 Additional Lifts of Pavements

## SPECIAL PROVISION

### SECTION 527

#### ENERGY ABSORBING UNIT

(Energy Absorbing System (CAT))

##### 527.1 Description

The following sentences are added:

The work consists of furnishing and installing a Crash-cushion Attenuating Terminal (CAT) System as a permanent energy absorbing system at the median opening locations as noted on the Plans, in accordance with these Specifications or as approved by the Resident.

##### 527.2 Materials

The energy absorbing system shall be the SYRO® CAT-350 (SS-546) as manufactured by Trinity Industries, Inc. as approved and crash tested by the Federal Highway Administration. The units shall conform to the Federal NCHRP Report 350 Standard of Testing.

Reflective sheeting shall meet the requirements of Subsection 719.01, Reflective Sheeting – minimum ASTM Type XI; 3M™ Diamond Grade™ DG<sup>3</sup> Reflective Sheeting Series 4000 or approved equal.

##### 527.3 Construction Requirements

Height of installation of Reset CAT units shall be 27.5-inches to the top of rail, transitioning to the standard height of 30-inches over a 25-foot length of Type 3d Double rail located immediately after the last post of the CAT unit.

The reveal on soil tubes for post #1 and #2 of the CAT units shall not exceed 3.5-inches. If site grading is required to achieve the required rail height and soil tube reveal height, then such work will be incidental to the installation of the CAT unit(s).

A 12" x 36" reflective adhesive sheeting shall be applied to the nose of the CAT System after installation.

##### 527.4 Method of Measurement

Energy Absorbing System (CAT) will be measured by each unit complete, in place and accepted.

527.5 Basis of Payment

The accepted quantity of Energy Absorbing Systems will be paid for at the Contract unit price, complete in place and accepted. Payment shall be full compensation for furnishing all labor, equipment, materials and incidentals necessary to complete the work in accordance with these Specifications and the Contract Plans.

Connection of the CAT Systems to the proposed median guardrail will not be paid for separately, but shall be incidental to Item 527.301.

New Guardrail Delineators, when required, will be paid for under Item 606.353.

Payment will be made under:

<u>Pay Item</u>	<u>Pay Unit</u>
527.301      Energy Absorbing System (CAT)	Each



Date: 3/13/2015

Filename: ...MSTA002\_Quantities.dgn


ITEM NO.	DESCRIPTION	UNIT	VMS QUANTITY	SACO MEDIAN QUANTITY	TOLL PLAZA QUANTITY	TOTAL QUANTITY
202.1271	REMOVING EXISTING BITUMINOUS PAVEMENT	CY			200	200
202.203	PAVEMENT BUTT JOINTS	SY			350	350
203.20	COMMON EXCAVATION	CY	5		4900	4905
203.24	COMMON BORROW	CY	90			90
203.25	GRANULAR BORROW	CY			15	15
203.43	GEOFOAM LIGHTWEIGHT FILL	CY			2550	2550
203.45	LEVELING SAND	CY			500	500
206.082	STRUCTURAL EARTH EXCAVATION - MAJOR STRUCTURES	CY			30	30
304.09	AGGREGATE BASE COURSE - CRUSHED	CY			450	450
304.10	AGGREGATE SUBBASE COURSE - GRAVEL	CY			1800	1910
403.207	HOT MIX ASPHALT, 19.0 mm NOMINAL MAXIMUM SIZE	T			450	450
403.208	HOT MIX ASPHALT, 12.5 mm NOMINAL MAXIMUM SIZE, SURFACE	T			300	340
403.209	HOT MIX ASPHALT, 9.5 mm NOMINAL MAXIMUM SIZE (ISLAND & INCIDENTALS)	T			70	70
403.21	HOT MIX ASPHALT, 9.5 mm	T			100	100
403.213	HOT MIX ASPHALT, 12.5 mm NOMINAL MAXIMUM SIZE, BASE	T			400	400
409.15	BITUMINOUS TACK COAT, APPLIED	G			200	200
419.30	SAWING BITUMINOUS PAVEMENT	LF			1300	1300
502.111	STRUCTURAL CONCRETE FOOTING	CY			10	10
502.266	STRUCTURAL CONCRETE PLAZA SLAB ON GRADE	CY			25	25
502.56	CONCRETE FILL	CY			10	10
503.14	EPOXY - COATED REINFORCING STEEL, FABRICATED AND DELIVERED	LB			1350	1350
503.15	EPOXY - COATED REINFORCING STEEL, PLACING	LB			1350	1350
503.18	GLASS FIBER REINFORCED POLYMER (GFRP) REINFORCING BARS, FABRICATED AND DELIVERED	LB			1810	1810
503.19	GLASS FIBER REINFORCED POLYMER (GFRP) REINFORCING BARS, PLACING	LB			1810	1810
503.90	SYNTHETIC FIBER REINFORCEMENT	LB			175	175
506.30	SHOP COATING OF STRUCTURAL STEEL	LS			1	1
515.202	CLEAR PROTECTIVE COATING FOR CONCRETE SURFACES	SY			210	210
515.23	EPOXY OVERLAY	SY			12	12
518.51	REPAIR OF UPWARD FACING SURFACES - BELOW REINFORCING STEEL, <200 mm	SF			22	22
526.306	TEMPORARY CONCRETE BARRIER, TYPE I - SUPPLIED BY AUTHORITY (1,810 LF)	LS	0.2		0.8	1
526.311	PERMANENT CONCRETE BARRIER TYPE I	LF		70		70
526.342	PERMANENT CONCRETE BARRIER TYPE I TRANSITION	EA		2		2
627.301	ENERGY ABSORBING SYSTEM (CAT)	EA		1		1
527.342	WORK ZONE CRASH CUSHIONS TL-2	EA			1	1
602.30	FLOWABLE CONCRETE FILL	CY			15	15
603.152	16 INCH HDPE PIPE	LF			38	38
603.175	18 INCH REINFORCED CONCRETE PIPE - CLASS III	LF	23			23
604.248	CATCH BASIN TYPE F6	EA			1	1
606.1724	BRIDGE TRANSITION - TYPE III (MODIFIED)	EA		2		2
606.24	GUARDRAIL TYPE 3D - SINGLE RAIL	LF	325	325	1200	1850
606.2401	GUARDRAIL TYPE 3D - DOUBLE RAIL	LF		1062.5		1062.5
606.2652	TERMINAL END - REMOVE AND STACK	EA		2		2
606.278	TERMINAL END - ANCHORED END	EA	1	1		2
606.279	TERMINAL END - ANCHORED END, THRIE BEAM	EA	1			1
606.352	REFLECTORIZED BEAM GUARDRAIL DELINEATOR	EA		18		18
606.353	DELINEATOR POST	EA	5	2	3	10
606.354	DELINEATOR POST - REMOVE AND RESET	EA	2	2	2	6
606.3605	GUARDRAIL - REMOVE, MODIFY AND RESET, SINGLE RAIL	LF		112.5		112.5
606.3631	GUARDRAIL - REMOVE AND DISPOSE	LF	62.5	375	1175	1612.5
606.48	SINGLE GALVANIZED STEEL POST	EA		16		16
606.65	GUARDRAIL THRIE BEAM - SINGLE RAIL	LF	150			150
606.701	ASYMMETRICAL THRIE BEAM TRANSITION	EA	3			3
606.80	GUARDRAIL 350 FLEAT TERMINAL	EA	1			1
609.11	VERTICAL CURB TYPE 1	LF			430	430
609.12	VERTICAL CURB TYPE 1 - CIRCULAR	LF			20	20
609.234	TERMINAL CURB TYPE 1 - 4 FT	EA			2	2
609.441	CURBING REMOVE AND STACK	LF		100		100
610.08	PLAIN RIPRAP	CY	10			10
610.18	STONE DITCH PROTECTION	CY			10	10
613.319	EROSION CONTROL BLANKET	SY	600		3750	4350
615.07	LOAM	CY	60		450	510
618.1401	SEEDING METHOD NUMBER 2, PLAN QUANTITY	UN	10			10
618.1411	SEEDING METHOD NUMBER 3, PLAN QUANTITY	UN			34	34
619.1201	MULCH, PLAN QUANTITY	UN	10		34	44
619.1202	TEMPORARY MULCH	UN			34	34
620.58	EROSION CONTROL GEOTEXTILE	SY	20		20	40
620.625	CELLULAR CONFINEMENT SYSTEM	SY			300	300

NOTE: AN ESTIMATED QUANTITY OF ITEM 202.203 PAVEMENT BUTT JOINT - 350 SY AND ITEM 403.21 HOT MIX ASPHALT, 9.5 mm - 100 TONS, HAVE BEEN INCLUDED TO ADDRESS THE PAVEMENT SHIM NEEDED ON I-195 WESTBOUND (STATION 109+00 +/- TO STATION 111+50 +/-, LEFT) AT INTERCHANGE 36.


ITEM NO.	DESCRIPTION	UNIT	VMS QUANTITY	SACO MEDIAN QUANTITY	TOLL PLAZA QUANTITY	TOTAL QUANTITY
620.70	HDPE GEOMEMBRANE	SY			2900	2900
626.11	PRECAST CONCRETE JUNCTION BOX	EA	1			1
626.31	18 in FOUNDATION	EA			8	8
626.32	24 in FOUNDATION	EA			1	1
626.331	30-INCH DIA., GREATER THAN 8-FEET LONG, AND ALL 36-INCH AND 42-INCH DIA. FOUNDATIONS	CY	13			13
626.36	REMOVE OR MODIFY CONCRETE FOUNDATION	EA			8	8
626.38	GROUND MOUNTED CABINET FOUNDATION	EA	1			1
627.73	TEMPORARY 6 INCH PAVEMENT MARKING TAPE	LF			4900	4900
627.731	TEMPORARY 6 INCH BLACK PAVEMENT MARKING TAPE	LF			2900	2900
629.05	HAND LABOR, STRAIGHT TIME	HR			28	28
631.10	AIR COMPRESSOR (INCLUDING OPERATOR)	HR			8	8
631.12	ALL PURPOSE EXCAVATOR (INCLUDING OPERATOR)	HR			20	20
631.13	BULLDOZER (INCLUDING OPERATOR)	HR			20	20
631.172	TRUCK - LARGE (INCLUDING OPERATOR)	HR			40	40
631.22	FRONT END LOADER (INCLUDING OPERATOR)	HR			20	20
631.32	CULVERT CLEANER (INCLUDING OPERATOR)	HR			20	20
631.36	FOREMAN	HR			8	8
631.50	JACKHAMMER (AIR TOOL INCLUDING OPERATOR)	HR			8	8
631.51	BUCKET TRUCK	HR			8	8
631.52	SCISSOR LIFT	HR			8	8
631.53	ELECTRICIAN	HR			8	8
631.54	ELECTRICIAN'S APPRENTICE	HR			8	8
634.25	SERVICE POLE COMPLETE WITH CABINET AND CONTROLS	EA	1			1
643.712	LANE USE SIGNAL	EA			1	1
645.105	REMOVE AND STACK SIGN	EA			6	6
645.109	REMOVE AND RESET SIGN	EA			21	21
645.123	REMOVAL, DISASSEMBLY AND RELOCATION OF VMS AND SUPPORTING STRUCTURE	LS	1			1
645.161	BREAKAWAY DEVICE SINGLE POLE	EA			1	1
645.289	STEEL H-BEAM POLES	LB			1150	1150
645.303	REMOVE AND RESET DELINEATOR	EA			6	6
645.403	INSTALLATION OF TYPE 1 SIGNS	EA			13	13
652.30	FLASHING ARROW	EA	2		1	3
652.312	TYPE III BARRICADES	EA			3	3
652.33	DRUM	EA	85		65	150
652.35	CONSTRUCTION SIGNS	SF	790	120	619.5	1529.5
652.361	MAINTENANCE OF TRAFFIC CONTROL DEVICES	LS	0.3		0.7	1
652.41	PORTABLE - CHANGEABLE MESSAGE SIGN	EA	2			2
652.45	TRUCK MOUNTED ATTENUATOR	CD	10			10
655.012	INSTALLATION OF CASH LANE CONTROLLER CABINET	EA			1	1
655.02	DVAS MOUNT INSTALLATION	EA			1	1
655.04	INSTALLATION OF SENSOR LOOPS	LS			1	1
655.05	INSTALLATION OF AVI ANTENNAS	EA			1	1
655.07	TRAFFIC CONTROL PEDESTAL PREPARATION WORK	EA			1	1
655.11	#10 AWG WIRE	LF			450	450
655.12	#12 AWG WIRE	LF			600	600
655.13	#14 AWG WIRE	LF			50	50
655.14	4pr/24 (CATEGORY 5e) CABLE	LF			1700	1700
655.16	FIBER OPTIC CABLE - 6 FIBER	LF			600	600
655.17	IVIS HOMERUN LOOP CABLE (IMSA 50-2 #16)	LF			400	400
655.203	1 1/2" SCHEDULE 80 PVC CONDUIT	LF			50	50
655.2031	2" SCHEDULE 80 PVC CONDUIT	LF			175	175
655.204	3" SCHEDULE 80 PVC CONDUIT	LF			10	10
655.2071	2" GALVANIZED RIGID METAL CONDUIT	LF			190	190
655.2102	2" LIQUID TIGHT METALLIC FLEX CONDUIT	LF			20	20
655.223	TYPE D PULL BOX OUTDOOR CANOPY	EA			4	4
655.81	KEY SWITCH	EA			2	2
656.50	BALED HAY, IN PLACE	EA	10		50	60
656.60	TEMPORARY BERMS	LF			600	600
656.62	TEMPORARY SLOPE DRAINS	LF			30	30
656.632	30 INCH TEMPORARY SILT FENCE	LF	250		1500	1750
659.10	MOBILIZATION	LS			1	1
669.01	BOLLARD	EA			4	4
800.501	TOLL GANTRY INSTALLATION	LS			1	1

TOLL PLAZA EARTHWORK SUMMARY				
<b>COMMON EXCAVATION</b>				
COMMON EXCAVATION (FROM CROSS SECTIONS)	1,094			
GRUBBING IN FILL	675			
UNDERCUT (LEDGE UNDERCUT AND FROST TRANSITION)	0			
EXCAVATION FOR GEOFOAM BLOCK AND LEVELING SAND	3,262			
EXISTING PAVEMENT REMOVAL (DEDUCT)	184			
TOTAL COMMON EXCAVATION	4,847			
Rounding	53			
Total	4,900			
<b>FILL FOR BORROW CALCULATIONS</b>				
TOTAL COMMON FILL (FROM CROSS SECTIONS)	6,239			
GRUBBING IN FILL (ADD)	675			
GEOFOAM BLOCK (DEDUCT)	2,518			
LEVELING SAND (DEDUCT)	409			
TOTAL FILL	3,987			
<b>ROCK EXCAVATION FOR ESTIMATE</b>				
ROCK EXCAVATION (FROM CROSS SECTIONS)	0			
TOTAL ROCK EXCAVATION	0			
<b>AVAILABLE COMMON EXCAVATION BORROW CALCULATIONS</b>				
(1) TOTAL COMMON EXCAVATION	4,847			
DEDUCTIONS:				
GRUBBING IN CUT				
GRUBBING IN FILL	675			
MUCK EXCAVATION	3,262			
PAVEMENT SALVAGE (CUT & FILL)				
(2) TOTAL DEDUCTIONS	3,937			
TOTAL AVAILABLE COMMON EXCAVATION	910			
TOTAL AVAILABLE STRUCT. EXCAVATIONS (UNDERDRAIN ONLY)				
TOTAL AVAILABLE NON-ROCK EXCAVATION	910			
<b>COMPUTATION OF WASTE STORAGE &amp; WASTE MATERIAL</b>				
TOTAL AVAIL. WASTE STORAGE AREA (FROM CROSS SECTIONS)	3,987			
GRUBBING IN CUT	0			
GRUBBING IN FILL	675			
UNDERCUT	0			
EXISTING PAVEMENT REMOVAL	184			
STONE DITCH PROTECTION AND RIPRAP AREAS	20			
TOTAL WASTE MATERIAL TO BE UTILIZED	0			
TOTAL WASTE MATERIAL TO BE WASTED	879			
<b>COMPUTATION OF GRANULAR BORROW FOR ESTIMATE</b>				
GRANULAR BORROW FOR UNDERCUTTING AND BOX CULVERT	0			
GRANULAR BORROW	0 x 1.15			0
<b>COMPUTATION FOR COMMON BORROW FOR ESTIMATE</b>				
(3) TOTAL FILL (TOTAL FILL - GRANULAR BORROW)	3,987			
TOTAL AVAIL. NON-ROCK EXCAV.	910 x 0.85 =	774		
TOTAL AVAIL. ROCK EXCAV.	0 x 1.33 =	0		
TOTAL AVAIL. STR. ROCK EXCAV.	0 x 1.33 =	0		
(4) TOTAL AVAILABLE EXCAVATION	=	774		
EXCESS EXCAVATION = TOTAL AVAILABLE EXCAVATION MINUS TOTAL FILL	-2,335			
PLUS TOTAL WASTE MATERIAL TO BE WASTED				

Scale:			
No.	Revision	By	Date
1	Addendum No. 1	TFD	3/15
2	Addendum No. 2	TFD	3/15

Designed by:							
							
CONSULTANT PROJECT MANAGER: GREG EDWARDS, PE							
	By	Date		By	Date		
Designed	TFD	02/15	Checked	GAE	02/15		
Drawn	PZA	02/15	In Charge of	GAE	02/15		

STANTEC CONSULTING SERVICES INC.	
482 PAYNE ROAD	
SCARBOROUGH, ME 04074	
TEL (207) 887-3448	
FAX (207) 883-3376	

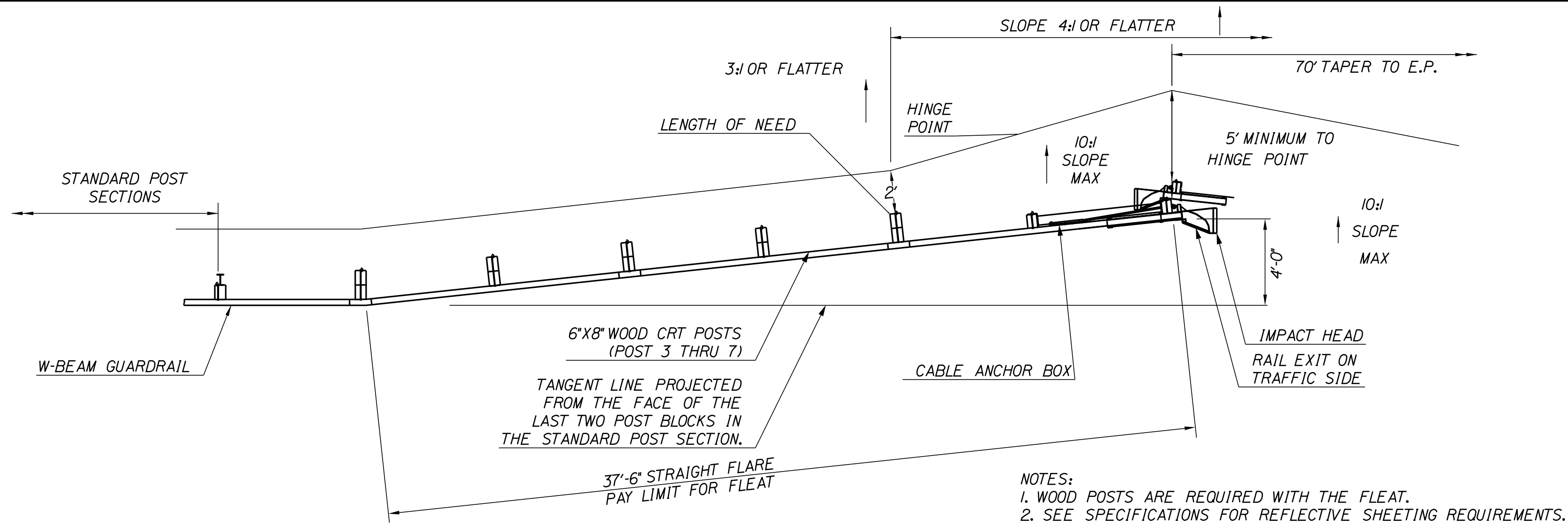
	<b>THE GOLD STAR MEMORIAL HIGHWAY</b>
MTA PROJECT MANAGER: RALPH C. NORWOOD, IV, PE	

INTERCHANGE 36 SACO TOLL PLAZA LANE ADDITION ESTIMATED QUANTITIES & EARTHWORKS SUMMARY	
SHEET NUMBER:	
CONTRACT: 2015.06	2 OF 54

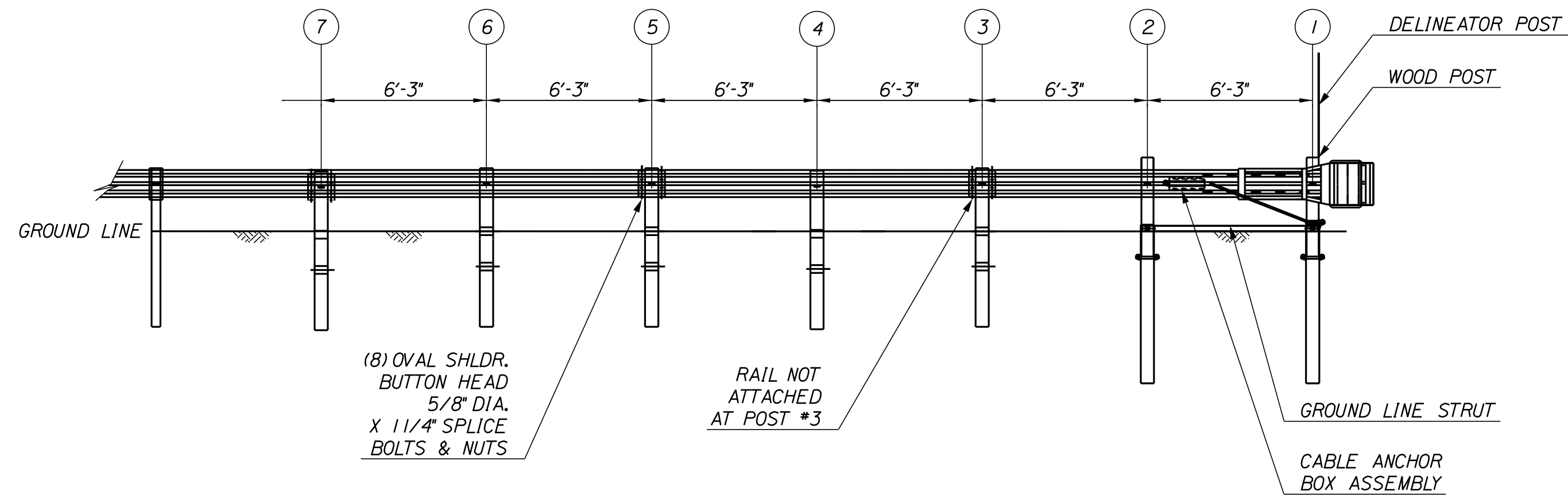


Date: 3/13/2015

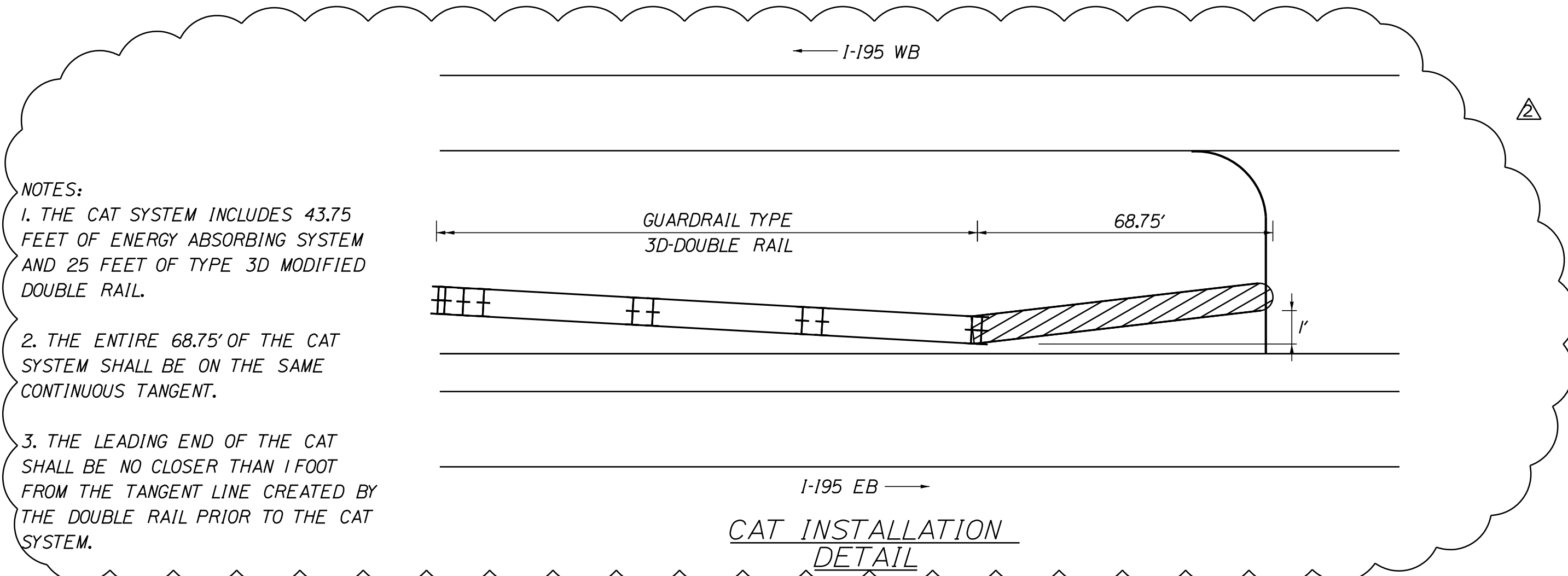
Filename: ...000-HIGHWAY\MTA\011\_Det\_02.dgn



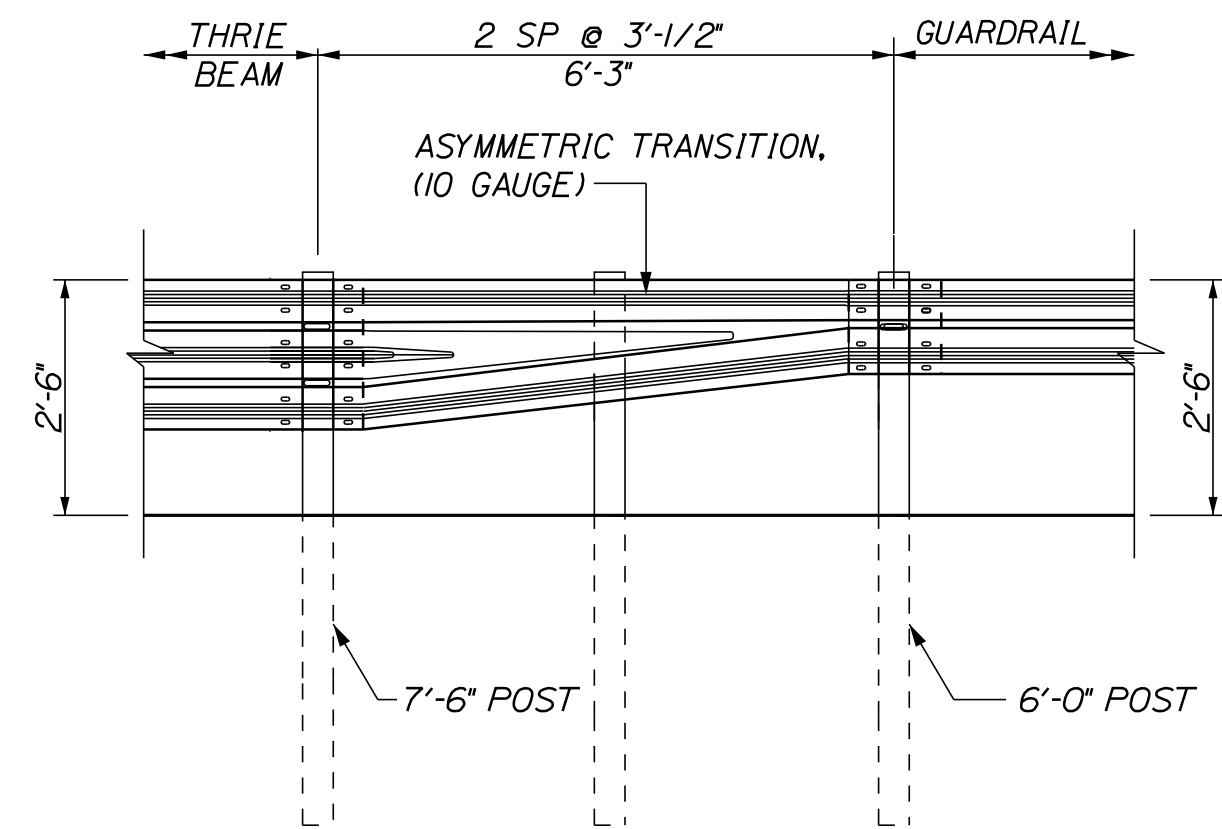
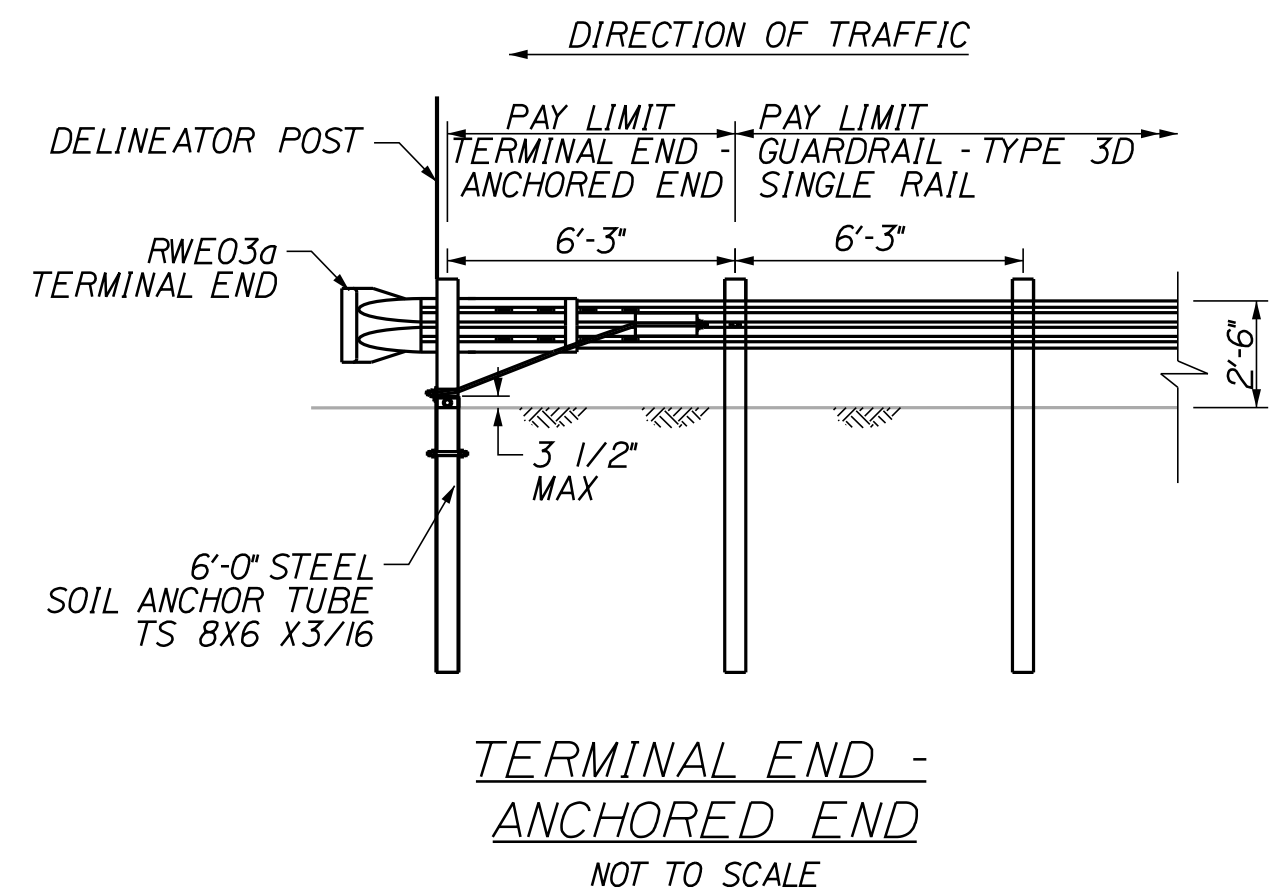
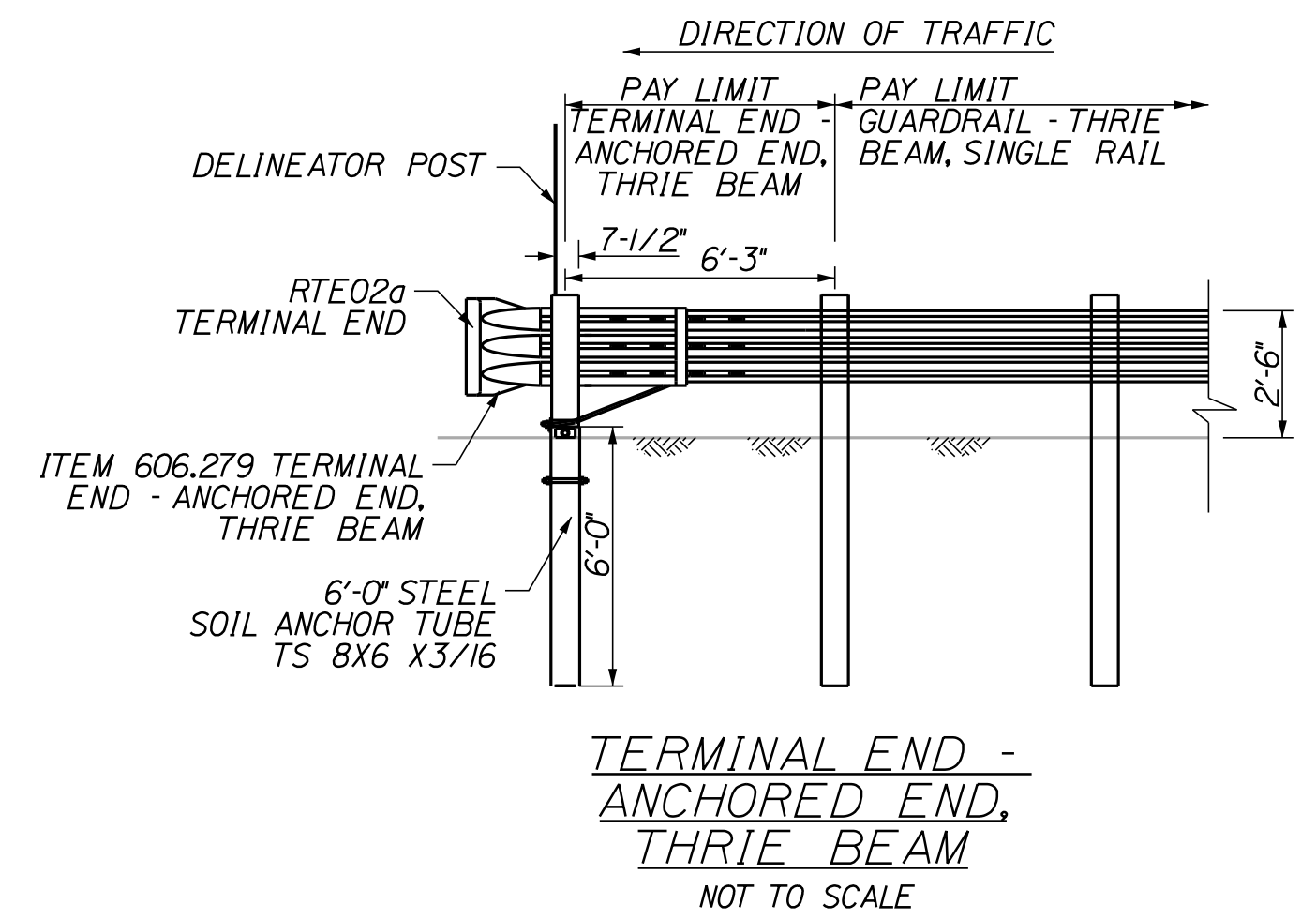
PLAN  
NOT TO SCALE



ELEVATION  
GUARDRAIL 350 FLEAT TERMINAL  
NOT TO SCALE



- NOTES:
1. THE CAT SYSTEM INCLUDES 43.75 FEET OF ENERGY ABSORBING SYSTEM AND 25 FEET OF TYPE 3D MODIFIED DOUBLE RAIL.
  2. THE ENTIRE 68.75' OF THE CAT SYSTEM SHALL BE ON THE SAME CONTINUOUS TANGENT.
  3. THE LEADING END OF THE CAT SHALL BE NO CLOSER THAN 1 FOOT FROM THE TANGENT LINE CREATED BY THE DOUBLE RAIL PRIOR TO THE CAT SYSTEM.




W-BEAM TO THRIE BEAM TRANSITION SECTION  
NOT TO SCALE

GENERAL GUARDRAIL INSTALLATION NOTE:

1. THE CONTRACTOR SHALL FOLLOW ALL MANUFACTURER'S INSTALLATION INSTRUCTIONS FOR THE INSTALLATION OF ALL GUARDRAIL COMPONENTS TO BE INSTALLED. THE CONTRACTOR SHALL NOTIFY THE RESIDENT ENGINEER OF ANY CONFLICTS OR IRREGULARITIES BETWEEN THE MANUFACTURER'S INSTALLATION INSTRUCTIONS AND THE CONTRACT DOCUMENTS.
2. THE CONTRACTOR IS REQUIRED TO HAVE AN APPROVED CRASH END TREATMENT ON ALL GUARDRAIL ENDS PRIOR TO THE REMOVAL OF ANY MOT FEATURES.
3. GUARDRAIL HEIGHT SHALL BE 30' 0" +/- 1/2". GUARDRAIL HEIGHT SHALL BE MEASURED FROM AT GROUND ELEVATION ADJACENT TO EACH POST.
4. THE CONTRACTOR SHALL REMOVE AND DISPOSE OF ALL CUT BOLTS, DISCARD PARTS, TRASH, PAVEMENT DEBRIS, ETC., AFTER COMPLETING THE GUARDRAIL INSTALLATION.
5. CONNECTION FOR PROPOSED RAIL TO EXISTING RAIL SHALL BE INCIDENTAL TO THE PROPOSED GUARDRAIL ITEMS.
6. THE FLEAT 350 TERMINAL SHALL BE INSTALLED AT A HEIGHT OF 27' 6" AT THE TERMINAL HEAD AND TRANSITIONED TO 30' 0" +/- 1/2" OVER 25 FEET. HEIGHT OF FLEAT 350 RAIL SHALL BE MEASURED FROM THE GROUND ELEVATION DIRECTLY ADJACENT TO THE FLEAT RAIL.
7. SOIL ANCHOR TUBES INSTALLED AS PART OF FLEAT OR TRAILING TERMINAL ENDS SHALL NOT PROTRUDE FROM THE GROUND MORE THAN 3/2". ADDITIONAL SITE GRADING MAY BE REQUIRED TO ADJUST SOIL TUBE REVEAL AND IF REQUIRED SHALL NOT DIRECT STORM WATER SURFACE DRAINAGE TOWARDS THE SHOULDER OR TRAVEL WAY. ADDITIONAL SITE GRADING SHALL BE INCIDENTAL TO THE END TERMINAL INSTALLATION.

Scale:			
AS NOTED			
No.	Revision	By	Date
1	Addendum No. 2	TFD	3/15


Designed by:

 **Stantec**

CONSULTANT PROJECT MANAGER: GREG EDWARDS, PE

	By	Date		By	Date
Designed	TFD	02/15	Checked	GAE	02/15
Drawn	PZA	02/15	In Charge of	GAE	02/15

STANTEC CONSULTING SERVICES INC.  
482 PAYNE ROAD  
SCARBOROUGH, ME 04074  
TEL (207) 887-3448  
FAX (207) 883-3376



THE GOLD STAR  
MEMORIAL HIGHWAY

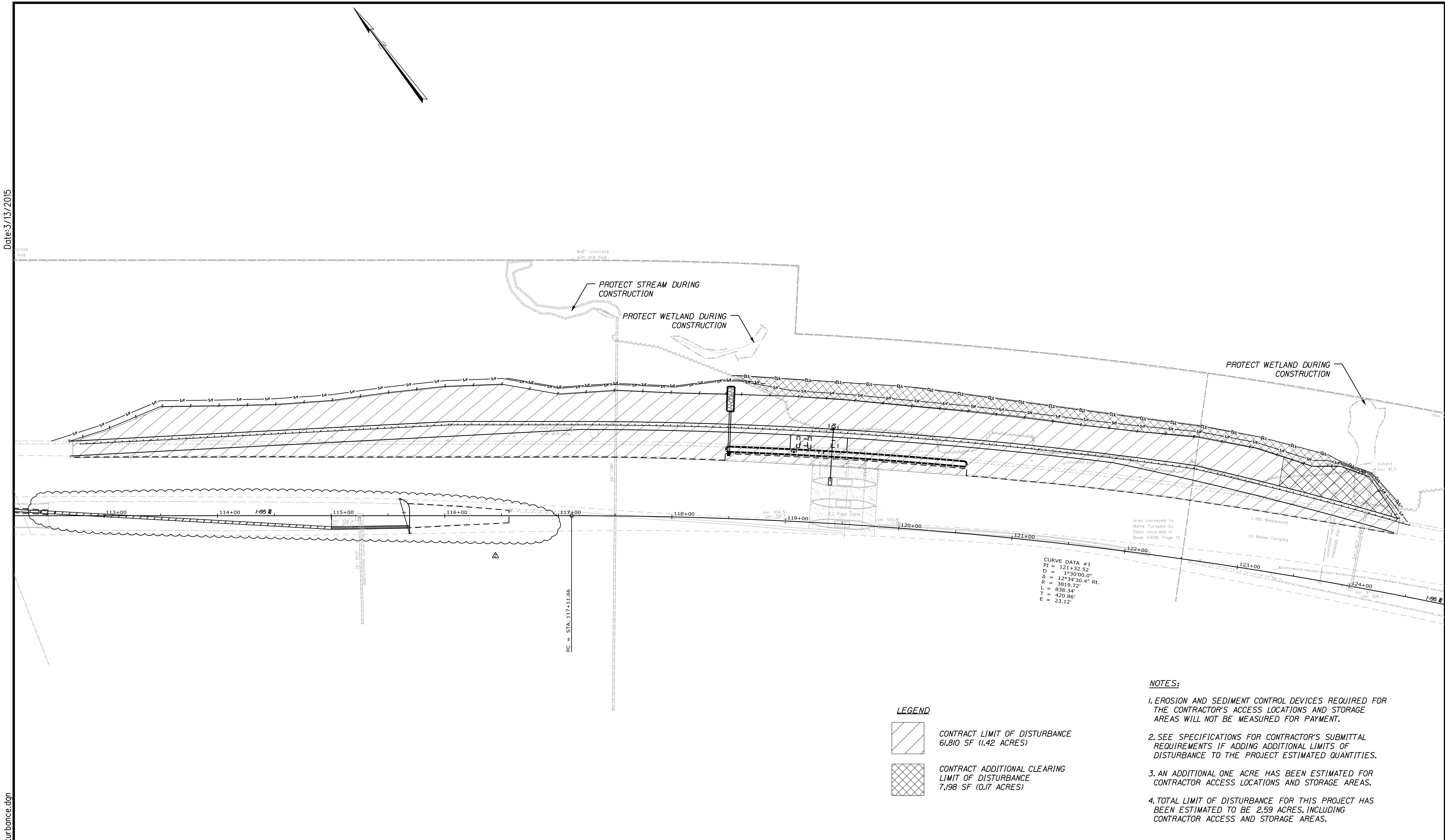
INTERCHANGE 36  
SACO TOLL PLAZA LANE ADDITION  
GUARDRAIL DETAILS  
(1 OF 2)

SHEET NUMBER:  
CONTRACT: 2015.06  
18 OF 54



Date: 3/13/2015

Filename: ...\\013\_Limit of Disturbance.dgn



- NOTES:**
- 1. EROSION AND SEDIMENT CONTROL DEVICES REQUIRED FOR THE CONTRACTOR'S ACCESS LOCATIONS AND STORAGE AREAS WILL NOT BE MEASURED FOR PAYMENT.
  - 2. SEE SPECIFICATIONS FOR CONTRACTOR'S SUBMITTAL REQUIREMENTS IF ADDING ADDITIONAL LIMITS OF DISTURBANCE TO THE PROJECT ESTIMATED QUANTITIES.
  - 3. AN ADDITIONAL ONE ACRE HAS BEEN ESTIMATED FOR CONTRACTOR ACCESS LOCATIONS AND STORAGE AREAS.
  - 4. TOTAL LIMIT OF DISTURBANCE FOR THIS PROJECT HAS BEEN ESTIMATED TO BE 2.59 ACRES, INCLUDING CONTRACTOR ACCESS AND STORAGE AREAS.

**LEGEND**

CONTRACT LIMIT OF DISTURBANCE  
61,810 SF (1.42 ACRES)

CONTRACT ADDITIONAL CLEARING  
LIMIT OF DISTURBANCE  
7,198 SF (0.17 ACRES)

Scale: 40 0 40 80  
Scale of Feet

No.	Revision	By	Date
1	Addendum No. 2	TFD	3/15

Designed by:  
 **Stantec**

CONSULTANT PROJECT MANAGER: GREG EDWARDS, PE

	By	Date	By	Date	
Designed	TFD	02/15	Checked	GAE	02/15
Drawn	PZA	02/15	In Charge of	GAE	02/15

STANTEC CONSULTING SERVICES INC.  
482 PAYNE ROAD  
SCARBOROUGH, ME 04074  
TEL (207) 887-3448  
FAX (207) 883-3376

**THE GOLD STAR  
MEMORIAL HIGHWAY**

MTA PROJECT MANAGER: RALPH C. NORWOOD, IV, PE

INTERCHANGE 36  
SACO TOLL PLAZA LANE ADDITION  
LIMIT OF DISTURBANCE  
PLAN

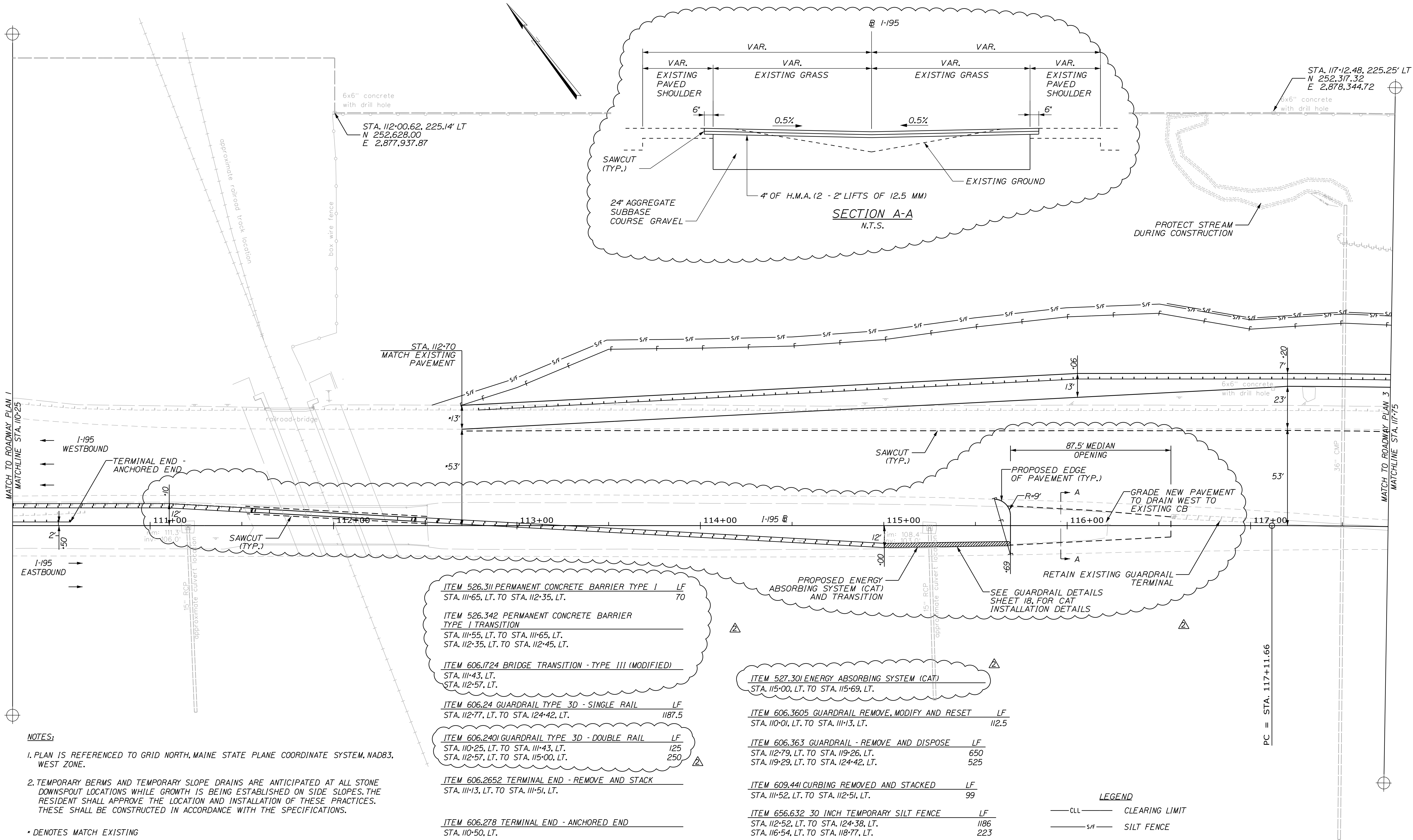
SHEET NUMBER:  
CONTRACT: 2015.06

21 OF 54



Date: 3/13/2015

Filename: ...\\HIGHWAY\\MSTA\\015\_Plan\_02.dgn



Scale: 25 0 25 50  
Scale of Feet

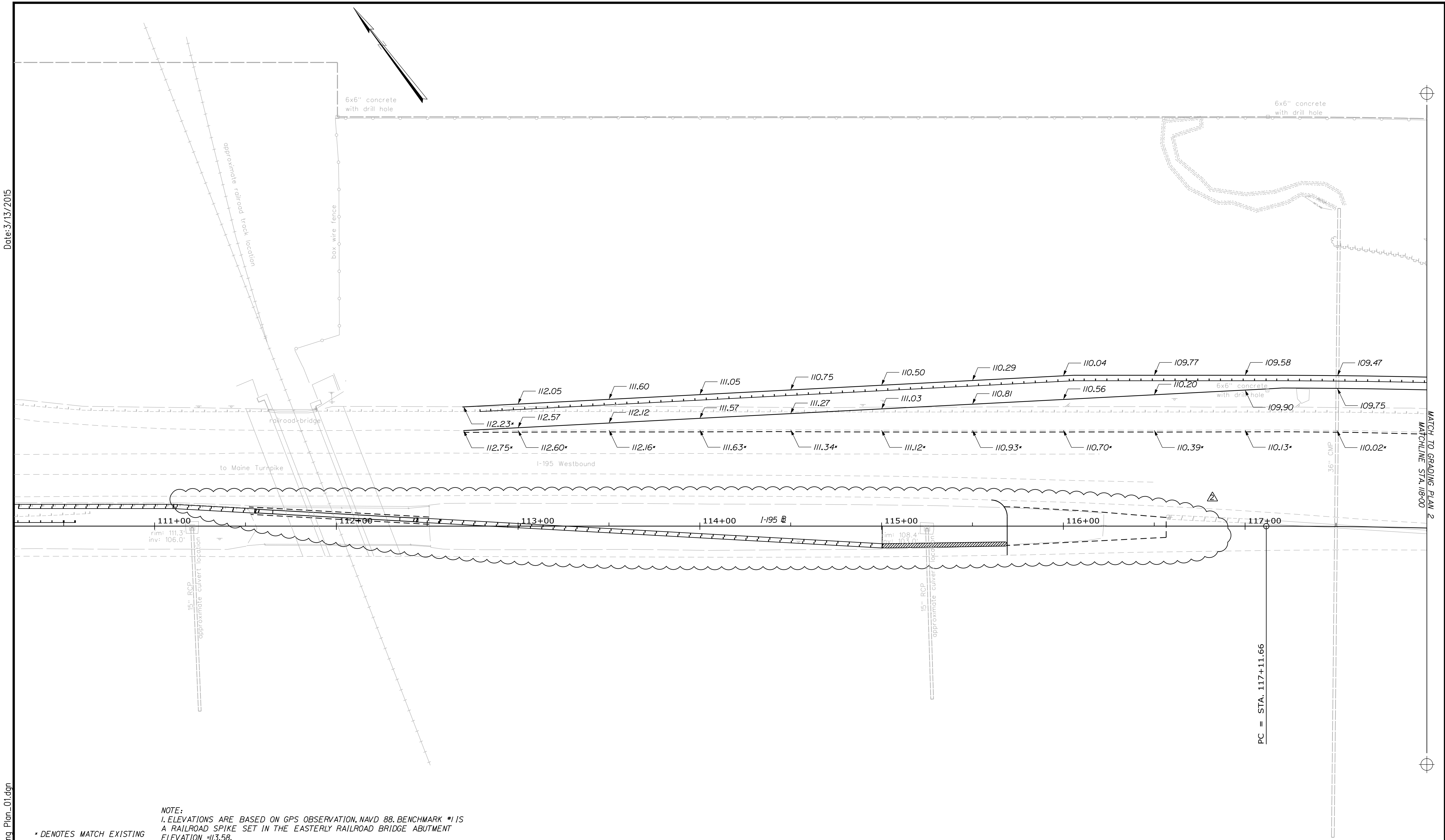
No.	Revision	By	Date
1	Addendum No. 2	TFD	3/15

CONSULTANT PROJECT MANAGER: GREG EDWARDS, PE					
	By	Date		By	Date
Designed	TFD	02/15	Checked	GAE	02/15
Drawn	PZA	02/15	In Charge of	GAE	02/15

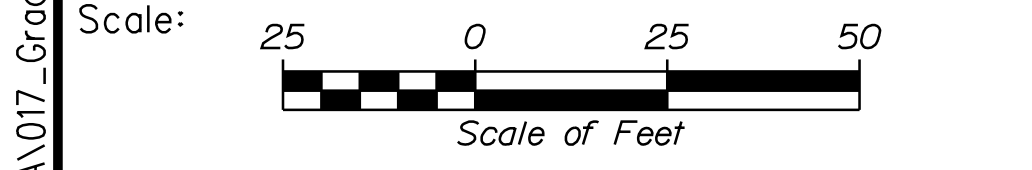
Designed by:  
**Stantec**  
STANTEC CONSULTING SERVICES INC.  
482 PAYNE ROAD  
SCARBOROUGH, ME 04074  
TEL (207) 887-3448  
FAX (207) 883-3376

**THE GOLD STAR  
MEMORIAL HIGHWAY**  
MTA PROJECT MANAGER: RALPH C. NORWOOD, IV, PE

**INTERCHANGE 36  
SACO TOLL PLAZA LANE ADDITION  
ROADWAY PLANS  
(2 OF 4)**  
SHEET NUMBER:  
CONTRACT: 2015.06  
23 OF 54



NOTE:  
1. ELEVATIONS ARE BASED ON GPS OBSERVATION, NAVD 88, BENCHMARK #1 IS  
A RAILROAD SPIKE SET IN THE EASTERLY RAILROAD BRIDGE ABUTMENT  
ELEVATION -113.58.  
\* DENOTES MATCH EXISTING



No.	Revision	By	Date
1	Addendum No. 2	TFD	3/15

Designed by:					
CONSULTANT PROJECT MANAGER: GREG EDWARDS, PE					
	By	Date		By	Date
Designed	TFD	02/15	Checked	GAE	02/15
Drawn	PZA	02/15	In Charge of	GAE	02/15

STANTEC CONSULTING SERVICES INC.  
482 PAYNE ROAD  
SCARBOROUGH, ME 04074  
TEL (207) 887-3448  
FAX (207) 883-3376

THE GOLD STAR  
MEMORIAL HIGHWAY

MTA PROJECT MANAGER: RALPH C. NORWOOD, IV, PE

INTERCHANGE 36  
SACO TOLL PLAZA LANE ADDITION  
GRADING PLANS  
(1 OF 2)

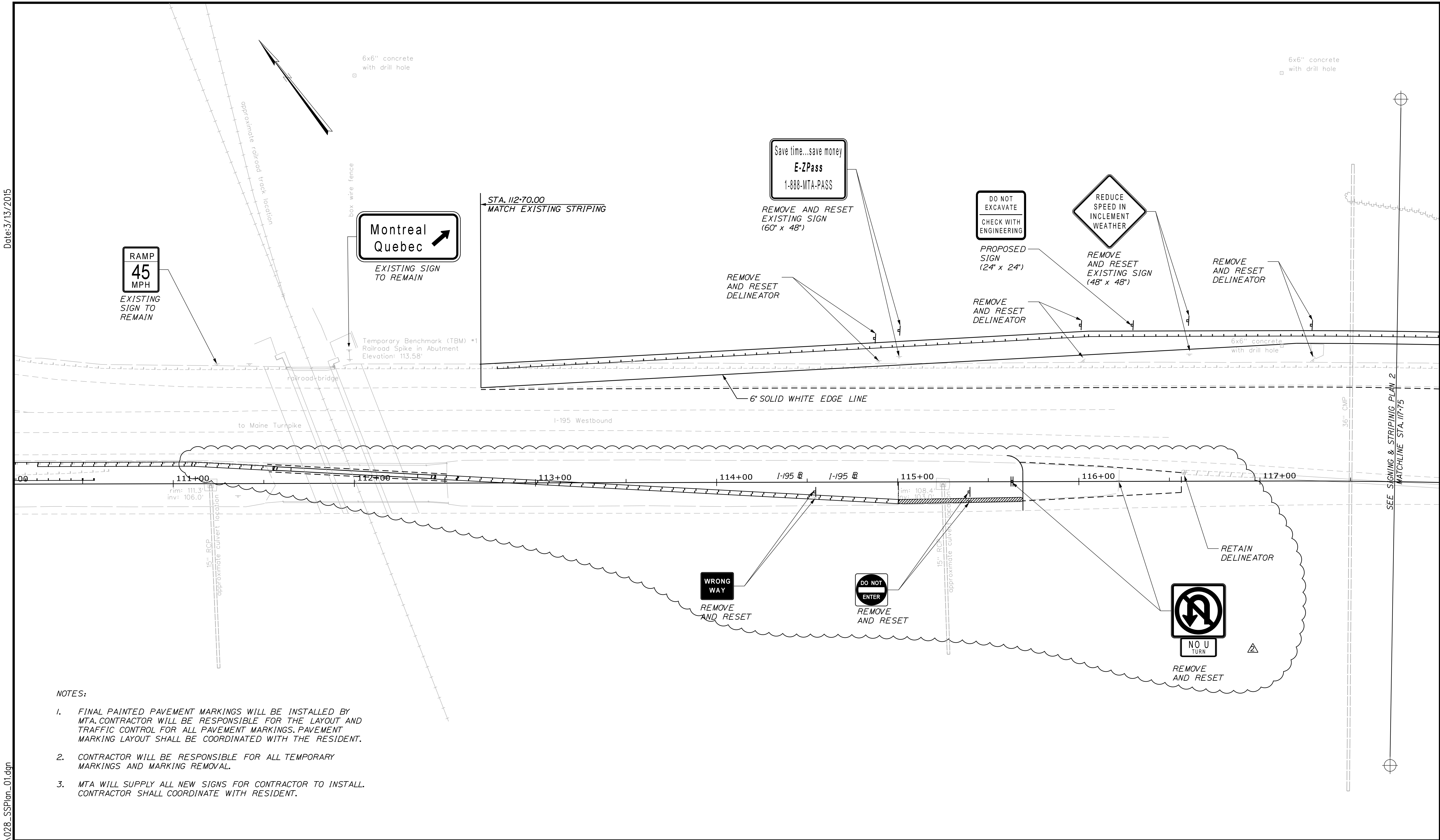
SHEET NUMBER:  
CONTRACT: 2015.06

26 OF 54



Date: 3/13/2015


Filename: ...\\HIGHWAY\\MSTA\\028\_SS\\Plan\_01.dgn



- NOTES:
1. FINAL PAINTED PAVEMENT MARKINGS WILL BE INSTALLED BY MTA. CONTRACTOR WILL BE RESPONSIBLE FOR THE LAYOUT AND TRAFFIC CONTROL FOR ALL PAVEMENT MARKINGS. PAVEMENT MARKING LAYOUT SHALL BE COORDINATED WITH THE RESIDENT.
  2. CONTRACTOR WILL BE RESPONSIBLE FOR ALL TEMPORARY MARKINGS AND MARKING REMOVAL.
  3. MTA WILL SUPPLY ALL NEW SIGNS FOR CONTRACTOR TO INSTALL. CONTRACTOR SHALL COORDINATE WITH RESIDENT.


Scale: 25 0 25 50  
Scale of Feet

No.	Revision	By	Date
1	Addendum No. 2	TFD	3/15

Designed by:  
 GORRILL PALMER

CONSULTANT PROJECT MANAGER: GREG EDWARDS, PE					
	By	Date		By	Date
Designed	LEM	01/15	Checked	DGE	01/15
Drawn	LAN	01/15	In Charge of	GAE	01/15

GORRILL PALMER  
PO Box 1237  
15 Shaker Road  
Gray, Maine 04039  
207.657.6910

 THE GOLD STAR MEMORIAL HIGHWAY

MTA PROJECT MANAGER: RALPH C. NORWOOD, IV, PE

INTERCHANGE 36  
SACO TOLL PLAZA LANE ADDITION  
SIGNING & STRIPING PLANS  
(1 OF 3)

SHEET NUMBER:  
CONTRACT: 2015.06

28 OF 54